

THE NOBLE WINE COLLECTION OF BARON VON STAFF-REITZENSTEIN

New York

3 December 2015



 CHRISTIE'S
Columbus Circle Wines & Spirits

INTERNATIONAL WINE DEPARTMENT & AUCTION CALENDAR

INTERNATIONAL HEAD OF DEPARTMENT, WINE

David Elswood
Tel: +44 (0)20 7752 3366

INTERNATIONAL BUSINESS DIRECTOR

Andrew Seltzer
Tel: +1 212 636 2362

CHINA

Simon Tam
Tel: +852 2978 6765

LONDON

Chris Munro
Tel: +44 (0)20 7752 3140

CONTINENTAL EUROPE

Edwin Vos
Tel: +31 (0)20 575 5208

NORTH AMERICA

Per Holmberg
Tel: +1 212 484 4841

SENIOR CONSULTANTS

Michael Broadbent M.W.
Anthony Hanson M.W.
Tel: +44 (0)20 7752 3314

WORLDWIDE

AMSTERDAM
Edwin Vos
Tel: +31 (0)20 575 5208

BELGIUM
Fiona Morrison M.W.
Tel: +32 (0)55 31 17 59

BORDEAUX
Bill Blatch
Tel: +33 (0)777 965 565

BEIJING
Austin Zhang
Tel: +86 10 8572 7927

GENEVA
Edwin Vos
Agathe de Saint Céran
Tel: +41 (0) 22 31 917 60

HONG KONG
Simon Tam
Tim Triptree
Fai Lo
Tel: +852 2978 6761

LONDON
Carolyn Holmes
Peter Mansell
Jessica Brook
Charles Foley
Duncan McEuen (Consultant)
Tel: +44 (0)20 3219 6097

LOS ANGELES
Scott Torrence
Tel: +1 310 385 2625

NEW YORK
Per Holmberg
Scott Torrence
Richard Young
Noah May
Layla Khabiri
Tel: +1 212 636 2270

PARIS
Edwin Vos
Agathe de Saint Céran
Tel: + 33(0) 1 40 76 83 68

BUSINESS MANAGERS

FRANCE
Sarah de Maistre
Tel: +33 (0)1 40 76 83 56

LONDON
Antonia Essex
Tel: +44 (0)20 7752 3101

HONG KONG
Cindy Tse
Tel: +852 2978 6759

BUSINESS COORDINATOR

AMERICAS
Devon Elovitz
Tel: +1 212 636 2270

16/09/15

AUCTION CALENDAR 2015

To include your property in these sales please consign ten weeks before the sale date. Contact the specialists or representative office for further information.

**24 NOVEMBER-
8 DECEMBER**
Christie's Wine Online/LDN
Online Only

28-29 NOVEMBER
Fine and Rare Wines
Hong Kong

2-3 DECEMBER
Finest and Rarest Wines
and Spirits
New York

10 DECEMBER
Finest and Rarest Wines
and Spirits
London, King Street

THE NOBLE WINE COLLECTION OF BARON VON STAFF-REITZENSTEIN

THURSDAY 3 DECEMBER 2015



Per Holmberg



Scott Torrence



Richard Young



Noah May



Andrew Seltzer



Edwin Vos



Layla Khabiri



Devon Elovitz

SPECIALISTS

Per Holmberg
pholmberg@christies.com
Scott Torrence
storrence@christies.com
Richard Young
ryoung@christies.com
Noah May
nmay@christies.com
Layla Khabiri
lkhabiri@christies.com
Tel: +1 212 636 2270
Fax: +1 212 636 4954

BUSINESS COORDINATOR

Devon Elovitz
delovitz@christies.com

AUCTION

Thursday 3 December 2015
at 10.00 am (Lots 601-1381)

20 Rockefeller Plaza
New York, NY 10020

AUCTION CODE AND NUMBER

In sending absentee bids or making enquiries, this sale
should be referred to as **LAFLEUR-12715**

AUCTIONEERS

Andrew McVinish (# 1379272)
Xan Serafin (# 1358510)
Richard Nelson (# 1184056)

SERVICES

GENERAL INFO

Tel: +1 212 636 2000
Fax: +1 212 636 2399

ABSENTEE AND TELEPHONE BIDS

Tel: +1 212 636 2437
Fax: +1 212 636 4938

CLIENT SERVICES

+1 212 636 2437

AUCTION RESULTS

christies.com

PAYMENT: BUYERS

Tel: +1 212 636 2495
Fax: +1 212 636 4939

PAYMENT: CONSIGNORS

Tel: +1 212 636 2350
Fax: +1 212 492 5477

SHIPPING

Art Transport
arttransport_newyork@christies.com
Tel: +1 212 636 2547
Fax: +1 212 636 4937

Christie's Inc. licensed by the New York City
Department of Consumer Affairs. Auction House
License #1213717

Columbus Circle Wines and Spirits licensed by the
New York State Liquor Authority. Wine/Liquor
Auction Permit #218803, License #1192500

Retail Liquor Store License Cert. #G817868, Serial
#1192500

Champagne generously provided by:

CHAMPAGNE
HENRIOT
MAISON FONDÉE EN 1808

CONDITIONS OF SALE

This auction is subject to
Important Notices,
Conditions of Sale and to Reserves

BUYING AT CHRISTIE'S

For an overview of the process, see the Buying at
Christie's section.

[25]

These auctions feature

CHRISTIE'S  LIVE

Bid live in Christie's salerooms worldwide
register at www.christies.com



**Browse this auction and view real-time
results on your iPhone and iPod Touch**

View catalogues and leave bids online
at christies.com



THE NOBLE WINE COLLECTION OF BARON VON STAFF-REITZENSTEIN

3 DECEMBER 2015

Our team of European and American Wine Specialists arrive in the Bavarian country side on a cool fall morning. The outside air is crisp enough to inspire thoughts of unpacking our cellar coats, the sun sits low in the morning sky and hasn't fully crested the great home's roofline.

Our host, Baron Hans von Staff-Reitzenstein warmly welcomes us with hot coffee and a hearty Bavarian breakfast. A full thirty minutes will pass before the thought of business touches any of our lips. Over introductory talk we learn this homestead has been in existence since the early middle ages and survives four prior iterations due to fire. Today the surrounding grounds are well-manicured, yet pastoral.

During his 61 years, Baron Hans has become a highly successful businessman, and during that time developed his passion in understanding wine both as a connoisseur and collector. In his private capacity over the past 25 years, he has built up a remarkable personal wine collection from around the world.

Over the course of four days, David Elswood, International Head of Wine, Edwin Vos, Head of Sales Continental Europe, Richard Young, Specialist Americas and I prepare nearly 13,000 bottles for sale from two great estates and four massive cellars.

The first cellar, buried deep within the recesses of the home's main living quarters, houses much of the treasured old and rare selections. Quietly resting here is the considerable Château d'Yquem vertical vintages 1891-2009 we have long waited to inspect. Underneath loose box lids I see vintages: 1940, 1945, 1961, and 1987 all tucked away awaiting our hands. Their conditions and labels are excellent for age. When fully extracted the totality of d'Yquem bottles are laid out to view, the sight is truly something to behold. In the corner are stacks of double magnums and Jeroboams of 1993 Château Lafleur, each in original banded wooden case, stacks of more d'Yquem, and carefully swathed magnums of Pétrus. Across the home, through several hallways, we come upon a sky-lit vestibule where a great stone archway frames the entrance to the second purpose built, temperature controlled cellar. The Châteaux represented are comprehensive: Pichon Lalande six-packs, magnum cases of Mouton-Rothschild and La Conseillante 1989, Ausone 1998-2000, La Chapelle from the mid-1990s, Jacques Prieur Grand Crus, Angelus, L'Eglise-Clinet, Margaux and Pavillon Rouge, Canon, Calon-Segur to name but a few. The bottle rack display room has been overtaken by cases of Vega Sicilia, DRC Assortments, Latour, Gazin and Valandraud. We have only begun and viewed but half the collection's entirety.

Four hours away by autobahn we head south to the historical manor home called Oberbiegelhof, the existence of this place dates from around 1330, but since 2004 the Reitzenstein family has dedicated is acreage to the training of competitive dressage horses. Upon entering the estate's grounds a massive stone and red tiled roof building, the length of a football pitch, dominates the sightline. Three substantial double-door archways lead to independent, below ground, cavernous stone and cement floored passive cellarage. Temperatures below ground are about 8-10 degrees less than the cool, early fall air outside. The rows between racked wines are so large they are double pallet wide. Here lie the youngest wines of the collection. Row upon row of wooden cases are neatly laid out. Many of the stylish St. Emilion producers are located here, as well as the Baron's collection of great Rhône and Australian Syrah based estates. Most impressive of all is the largest collection La Maison Chapoutier the team has ever come across under one roof. Nearly 1200 bottles and magnums in all, only the top Chapoutier wines are represented: Ermitage Le Pavillon (806 bottles), Ermitage L'Ermitage (73), Ermitage Le Meal rouge (73), Côte Rôtie La Mordorée (88), Châteauneuf-du-Pape Barbe Rac (78), Châteauneuf-du-Pape Croix de bois (55), and naturally Hermitage Vin de Paille (12). Simply astonishing.

The sale of this great personal collection comes at a time after much consideration. As Baron Hans' passion has grown and evolved, he felt a calling to become involved in the wine world in a more "hands-on" way. In his travels around the world to find the right place for an opportunity, he found himself in South Africa, one of the most exciting of New World wine-producing regions. In the Helderberg Mountains of nearby Stellenbosch, a location with world-class terroir and a proud history of winemaking, he fell in love with a vineyard and wine cellar owned by world-famous golf player, Ernie Els.

Baron von Staff-Reitzenstein and Ernie Els have joined hands in a partnership to drive the quality of the wines and elevate the brand to even higher prestige. Together they share a common vision to become one of the finest producers in the wine industry of South Africa and on an international level. To see his dream and new found passion to fruition Baron von Staff-Reitzenstein chose to place his private wine collection up for auction in the hopes of opening a new chapter along his journey in wine.

In the words of Baron Hans,

"It is time for my passion for wine to take on a new direction. To join hands with Ernie Els Wines is a brilliant opportunity for me to invest in a big wine brand with a high level of quality and great potential in the market. This collection on auction was my passion over many years- today, it can be yours! Good luck!"

Furthermore, The Baron will be donating some of the proceeds of the auction to Ernie Els' charity for autism, The Els for Autism Foundation.

Best wishes,

Scott M. Torrence
Vice President, Senior Wine Specialist



PALESTARD LA TONNELLE
1989
GRAND CRU CLASSÉ
SAINT-ÉMILION
499

LE GRAND
PICHON-LONGUEVILLE
1989
496

1988
493

1875
490

549
GRAND VIN DE LAFITE ROTHSCHILD
12 BOTTES
2000

500

CHATEAU
MOUTON-ROTHSCHILD
1991
491

CHATEAU CANON
1ER GRAND CRU CLASSÉ
ST-ÉMILION
1989
494

CHATEAU CORBIY
SAINT-ÉMILION
1988
492

1988
497

CHATEAU MALESOT
ST-ÉTIENNE
2000

CHATEAU
DU CRU - BEAUCAILLOU
SAINT-JULIEN - MÉDOC
1995
498

1991
495

CHATEAU
CALON-SEGUR
ST-ESTEPHE
MÉDOC
492

499

CHATEAU
L'ÉGLISE CLINET
POMEROL
2002





FEATURED WINES

LOTS

- 601 BURGUNDY
- 624 FIRST GROWTHS
- 768 CHÂTEAU D'YQUEM
- 841 MEDOC
- 1026 PETRUS
- 1070 POMEROL
- 1154 ST. EMILION
- 1242 CHAPOUTIER
- 1344 EGON MULLER
- 1346 PENFOLDS GRANGE
- 1372 SPAIN
- 1377 PORT



MAISON FONDÉE EN 1838
CÔTE D'OR - FRANCE
DOMAINE DE LA ROMANÉE-CONTI
MAREY-MONGE
ROMANÉE-CONTI
17,500 Bouteilles Récoltées
LES ASSOCIÉS GÉRANTS
Ferdinand Pichon
A. J. V. B. & Co.

CÔTE D'OR - FRANCE
DOMAINE DE LA ROMANÉE-CONTI
MAREY-MONGE
ROMANÉE-CONTI
LA TÂCHE
APPELLATION LA TÂCHE CONTRÔLÉE
17,500 Bouteilles Récoltées
LES ASSOCIÉS GÉRANTS
Ferdinand Pichon
A. J. V. B. & Co.

CÔTE D'OR - FRANCE
DOMAINE DE LA ROMANÉE-CONTI
MAREY-MONGE
ROMANÉE-CONTI
ROMANÉE-CONTI
APPELLATION ROMANÉE-CONTI CONTRÔLÉE
6,227 Bouteilles Récoltées
LES ASSOCIÉS GÉRANTS
Ferdinand Pichon
A. J. V. B. & Co.

CÔTE D'OR - FRANCE
DOMAINE DE LA ROMANÉE-CONTI
MAREY-MONGE
ROMANÉE-CONTI
LA TÂCHE
APPELLATION LA TÂCHE CONTRÔLÉE
17,500 Bouteilles Récoltées
LES ASSOCIÉS GÉRANTS
Ferdinand Pichon
A. J. V. B. & Co.

CÔTE D'OR - FRANCE
DOMAINE DE LA ROMANÉE-CONTI
MAREY-MONGE
ROMANÉE-CONTI
GRANDS ÉCHÉZEUX
APPELLATION GRANDS ÉCHÉZEUX CONTRÔLÉE
11,138 Bouteilles Récoltées
LES ASSOCIÉS GÉRANTS
Ferdinand Pichon
A. J. V. B. & Co.

ASSORTIMENT
2000



Domaine de la Romanée-Conti Assortment 2000
Romanée-Conti (1)
La Tâche
One nicked label (3)
Richebourg
One bin soiled label (2)
Romanée-Saint-Vivant (2)
Grands Echézeaux (2)
Echézeaux (2)
In original wooden case
601 12 bottles per lot \$20,000-30,000

Domaine de la Romanée-Conti, La Tâche 1991
Grand Cru, Côte de Nuits
Level: 1.0cm; lightly bin soiled label
602 1 bottle per lot \$2,200-3,200

Domaine de la Romanée-Conti, Richebourg 1994
Grand Cru, Côte de Nuits
Levels: 2.5cm or better
603 5 bottles per lot \$4,200-6,500

Domaine de la Romanée-Conti, Echézeaux 1994
Grand Cru, Côte de Nuits
Levels: 2.0cm or better
In two six-bottle original wooden cases, banded prior to Specialist inspection
604 12 bottles per lot \$7,000-10,000

Domaine Leroy, Vosne-Romanée, Les Beaux Monts 1989
1er Cru, Côte de Nuits
Levels: 1.0cm or better; slight signs of overfill seepage, one cracked wax capsule partially missing at top, lightly bin soiled labels
605 9 bottles per lot \$4,500-6,000

Domaine Leroy, Pommard, Les Trois Follots 1989
Côte de Beaune
Levels: 1.0cm or better, three cracked wax capsules with two partially missing at tops
606 12 bottles per lot \$3,500-5,500

J. PRIEUR GRANDS CRUS

J. Prieur, Clos Vougeot 1996
Grand Cru, Côte de Nuits
In two six-bottle original wooden cases
607 12 bottles per lot \$800-1,000

J. Prieur, Echézeaux 1996
Grand Cru, Côte de Nuits
Lot 608 in two six-bottle original wooden cases
Lot 609 in original wooden case, missing lid
608 12 bottles per lot \$1,400-1,800
609 6 ,, per lot \$700-900

J. Prieur, Echézeaux 1999
Grand Cru, Côte de Nuits
In two six-bottle original wooden cases
610 12 bottles per lot \$900-1,300

J. Prieur, Musigny 1997
Grand Cru, Côte de Nuits
In original wooden case
611 12 bottles per lot \$2,400-3,500

J. Prieur, Chambertin 1997
Grand Cru, Côte de Nuits
In original wooden case
612 12 bottles per lot \$1,800-2,800



J. Prieur, Chambertin 1999

Grand Cru, Côte de Nuits

Both lots two six-bottle original wooden cases

Parcel: Lots 613-614

613	12 bottles	per lot \$2,000-3,000
614	12 „	


CHAMBERTIN
 GRAND CRU
 APPELLATION CHAMBERTIN CONTRÔLÉE
Mis en bouteille au domaine
DOMAINE JACQUES PRIEUR
 Propriétaire à Meursault (Côte-d'Or) France
 PRODUCE OF FRANCE


 Domaine Jacques Prieur



J. Prieur, Corton Bressandes 1999

Grand Cru, Côte de Beaune

615 12 bottles *per lot* \$800-1,000

DUJAC

Dujac, Gevrey-Chambertin, Aux Combottes 1999

Côte de Nuits

Lot 616 in original carton

Lot 617 one nicked label

616 12 bottles *per lot* \$2,000-3,000

617 10 bottles *per lot* \$1,600-2,600

Dujac, Gevrey-Chambertin, Aux Combottes 2000

Côte de Nuits

Lot 618 in original carton

618 12 bottles *per lot* \$1,500-2,400

619 10 bottles *per lot* \$1,200-2,000

Marquis d'Angerville, Volnay Clos des Ducs 1996

1er Cru, Côte de Beaune

Lightly bin soiled labels

620 6 bottles *per lot* \$1,200-1,700

Bouchard Père et Fils, Montrachet 1996

Grand Cru, Côte de Beaune

In original wooden case, missing lid

621 12 bottles *per lot* \$3,500-5,000

Ramonet, Bâtard-Montrachet 1990

Grand Cru, Côte de Beaune

Levels: 2.0cm or better; one bin soiled label

622 6 bottles *per lot* \$2,200-3,200

Ramonet, Bâtard-Montrachet 1991

Grand Cru, Côte de Beaune

Levels: 2.0cm or better; three lightly bin soiled labels

623 6 bottles *per lot* \$2,000-3,000



THE FIRST GROWTHS





LAFITE-ROTHSCHILD

The name Lafite comes from the Gascon language term "la hite", which means "hillock". The estate is situated at the northern end of Pauillac, close to Cos d'Estournel which is just over the border in St.-Estèphe. The vineyard consists of three major areas: the hillsides around the Château, the adjacent Carruades plateau to the west, and 4.5 hectares in neighboring Saint Estèphe (which is entitled to the Pauillac appellation).



Richard Young, *Associate Specialist*

Château Lafite-Rothschild 1956

A good quantity of lots offered in this sale is from the 1956 vintage. An average year in Bordeaux but a very special year for the Baron—the Baroness' birth year. Bottles from this vintage are extremely difficult to find and offered here in quantity.

Château Lafite-Rothschild 1956

Pauillac, 1er cru classé

Levels: three upper shoulder, three mid shoulder; one corroded capsule, bin soiled and nicked labels

624 6 bottles *per lot \$2,400-3,500*

Château Lafite-Rothschild 1986

Pauillac, 1er cru classé

Levels: into neck

625 7 bottles *per lot \$4,000-5,500*

Château Lafite-Rothschild 1988

Pauillac, 1er cru classé

Levels: bottom neck or better; oxidized capsules

In original wooden case

626 12 bottles *per lot \$5,000-7,000*

Château Lafite-Rothschild 1993

Pauillac, 1er cru classé

Both lots with levels bottom neck or better

Both lots in original wooden cases

Parcel: lots 627-628

627 12 bottles *per lot \$4,500-6,500*

628 12 bottles *per lot \$4,500-6,500*

Château Lafite-Rothschild 1997

Pauillac, 1er cru classé

In original wooden case

629 12 bottles *per lot \$4,500-6,500*

Château Lafite-Rothschild 1998

Pauillac, 1er cru classé

Both lots in two six-bottle original wooden cases

Parcel: lots 630-631

630 12 bottles *per lot \$5,500-7,500*

631 12 ,,

Château Lafite-Rothschild 1999

Pauillac, 1er cru classé

Lot 632 in two six-bottle original wooden cases

Lot 633-635 in original wooden cases

Parcel: lots 632-635

632 12 bottles *per lot \$5,000-7,000*

633 12 ,,

634 12 ,,

635 12 ,,

Château Lafite-Rothschild 2000

Pauillac, 1er cru classé

Both lots in original wooden cases

Parcel: lots 636-637

636 12 bottles *per lot \$11,000-15,000*

637 12 ,,

Château Lafite-Rothschild 2001

Pauillac, 1er cru classé

In original wooden case

638 12 bottles *per lot \$5,000-7,000*

Château Lafite-Rothschild 2002

Pauillac, 1er cru classé

Both lots in original wooden cases, banded prior to Specialist inspection

Parcel: lots 639-640

639 12 bottles *per lot \$4,800-5,800*

640 12 ,,

Château Lafite-Rothschild 2003

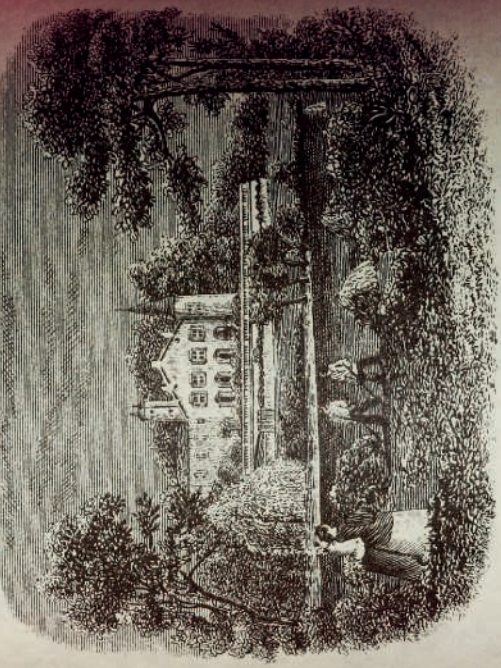
Pauillac, 1er cru classé

Lot 641 in original wooden case, banded prior to Specialist inspection

641 2 magnums *per lot \$2,400-3,000*

642 12 bottles *per lot \$7,000-9,000*

MIS EN BOUTEILLE AU CHÂTEAU



CHATEAU LAFITE ROTHSCHILD

2000

PAUILLAC

APPELLATION PAUILLAC CONTRÔLÉE

PRODUCE OF FRANCE

12,500 ml
750 ml

100%

SOCIÉTÉ CIVILE DU CHATEAU LAFITE ROTHSCHILD, PROPRIÉTAIRE À PAUILLAC (GIRONDE) FRANCE



LATOUR

Château Latour manages to achieve a rare stylistic balance, in that its wines are internationally known for both their elegance and purity of linear fruit flavor, and for their power, muscularity and heroic longevity. Few wines age with such consummate grace as those of Château Latour. These wines are highly tannic in youth, and are famously distinctive in the way they mature slowly, and on their own terms; stubbornly refusing to succumb to the effects of the natural passing of time. The other great hallmark of Latour is its consistency – the wines are consistently impressive, irrespective of whether the vintage is great, mediocre or even slightly disappointing.

The 47 hectares which surround the Château are called "l'Enclos". Only the grapes from these 47 hectares make it into the "Grand Vin de Château Latour". The soils vary from clayey gravel on a subsoil of marly sediment, gravelly sands with small pebbles and marly clay which suits Merlot. All the soils are characterized by excellent drainage which encourages the vines to develop deep roots in search of nutrients and water.

Frédéric Engerer, the President, along with the vineyard manager, Domingo Sanchez and the cellar-master, Pierre-Henri Chabot have ensured that grape selection is paramount, and only grapes from vines that are at least 25 years old are allowed into the Grand Vin. Hand-harvesting and a first sorting are carried out by 200 pickers, before being transported to the winery for the second round of sorting and destemming. The winery contains 66 temperature controlled stainless steel vats which enables the separate vinification of different plots. By December the wine is in new oak barrels, where it remains for about 18 months with rackings about every three months. Blending is completed by March the following year, with fining with egg white, but since 1999 there is no filtration and the wine is returned to vat for a month prior to bottling.

As Stephen Brook writes in "The Complete Bordeaux"; "No other Médoc wine can match Latour for power, depth of flavor, and grandeur."

Château Latour 1956

Pauillac, 1er cru classé

Levels: five bottom neck, four top shoulder, three upper shoulder, bin soiled labels, five Château-reconditioned bottles in 2003

643 12 bottles *per lot \$3,000-6,000*

Château Latour 1961

Pauillac, 1er cru classé

Levels: one top shoulder, one upper shoulder, one mid upper shoulder; one slightly depressed cork, bin soiled, faded, and torn labels, one Château-reconditioned in 1990, one Château-reconditioned in 2003

644 3 bottles *per lot \$6,000-7,500*

Château Latour 1993

Pauillac, 1er cru classé

Both lots in original wooden cases

Parcel: lots 645-646

645 12 bottles *per lot \$3,200-4,200*

646 12 ,,

Château Latour 1996

Pauillac, 1er cru classé

In original wooden case

647 12 bottles *per lot \$5,500-7,500*

Château Latour 2002

Pauillac, 1er cru classé

In original wooden case

648 12 bottles *per lot \$3,500-4,500*

Château Latour 2003

Pauillac, 1er cru classé

All lots in original wooden cases

Parcel: lots 649-651

649 12 bottles *per lot \$6,500-8,500*

650 12 ,,

651 12 ,,

Château Latour 1990

Pauillac, 1er cru classé

Both levels: bottom neck

Parcel: lots 652-653

652 12 bottles *per lot \$6,000-8,000*

653 12 ,,

Château Latour 1997

Pauillac, 1er cru classé

Both lots in two six-bottle original wooden cases

Parcel: lots 654-655

654 12 bottles *per lot \$3,500-4,500*

655 12 ,,

Château Latour 1998

Pauillac, 1er cru classé

Lots 656-658 in two six-bottle original wooden cases

Lots 659-660 in original wooden cases

Parcel: lots 656-658, 659-660

656 12 bottles *per lot \$3,500-4,500*

657 12 ,,

658 12 ,,

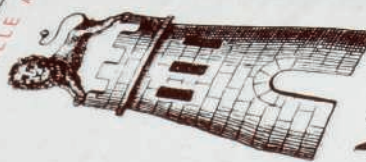
659 12 ,,

660 12 ,,


GRAND DE VIN
CHATEAU LATOUR
 PREMIER GRAND CRU CLASSÉ
 PAUILLAC
1990
 ALC. 12.5% Vol.
 DÉPÔSE
 CIVILE DU VIGNOBLE DE CHATEAU LATOUR. PROPRIÉTAIRE À PAUILLAC
 APPELLATION PAUILLAC CONTRÔLÉE

CHATEAU DE VIN
GRAND DE VIN

CHATEAU LATOUR
 PREMIER GRAND CRU CLASSÉ
 PAUILLAC
1990
 ALC. 12.5% Vol.
 DÉPÔSE
 CIVILE DU VIGNOBLE DE CHATEAU LATOUR. PROPRIÉTAIRE À PAUILLAC
 APPELLATION PAUILLAC CONTRÔLÉE

CHATEAU DE VIN
GRAND DE VIN

CHATEAU LATOUR
 PREMIER GRAND CRU CLASSÉ
 PAUILLAC
1990
 ALC. 12.5% Vol.
 DÉPÔSE
 CIVILE DU VIGNOBLE DE CHATEAU LATOUR. PROPRIÉTAIRE À PAUILLAC
 APPELLATION PAUILLAC CONTRÔLÉE

CHATEAU DE VIN
GRAND DE VIN

CHATEAU LATOUR
 PREMIER GRAND CRU CLASSÉ
 PAUILLAC
1990
 ALC. 12.5% Vol.
 DÉPÔSE
 CIVILE DU VIGNOBLE DE CHATEAU LATOUR. PROPRIÉTAIRE À PAUILLAC
 APPELLATION PAUILLAC CONTRÔLÉE





MOUTON-ROTHSCHILD

FOR THE LOVE OF ART: ILLUSTRATING THE LABEL

Fine wine connoisseurs around the globe respect Château Mouton-Rothschild as much for its adherence to tradition as its pursuit of everlasting style. The wine itself is legendary starting with harvests following WWI and achieving near perfection in the modern era with its brilliant 1982.

Unique to Mouton however are its artist labels. These are as sought after as the wine itself, the very fact that Christie's has sold multiple verticals of both bottle and magnum formats every few years is a testament to the enduring sensuality that both wine and art share.

Heretofore the tradition of artistic renditions for a commercial label was unheard of by the great French Châteaux. Baron Philippe, ever the shrewd marketer, recognized an opportunity to distinguish his wine as Estate Bottled – a pioneering practice in 1924 and so heralded this moment with a “one-off” label. The 1924 Jean Carlu label's style is expressed in the major artistic movement of its day, Cubism. Both elements classic to Mouton-Rothschild are represented, the ram and the five arrows representing the branches of the Rothschild clan. The design was shocking and revolutionary at that time. Fundamentals of the Cubist style would echo itself in the design of the 1925-26 labels.

History has a habit of getting in the way of great plans and so it was that a reappearance of the artist label would not ensue until the monumental 1945 harvest was safely in barrel. The celebratory nature of this commissioned work commemorates the Allied victory in Europe. From a young unknown artist at the time, Philippe Jullian chose to depict the code sign of the French Resistance, V for Victory. The label today is among the most iconic for Mouton which had succeeded in crafting a masterful and legendary wine in 1945.

So with this tradition renewed from 1946 onward an important contemporary artist would be commissioned to illustrate the label with an original work. Baron Philippe had settled upon Mouton-Rothschild's definitive elements: The Ram emblem, a declaration of the production numbers, and importantly the proprietor's signature. Only in historical moments important to Mouton did a commissioned label not occur, in 1953 the centenary of the purchase of Mouton, in 1977 the official visitation at Mouton of Queen Elizabeth, in 2000 the bottle itself was deemed collectable with the etched gold enamel relief of the Augsburg Ram on to heavy glass, and once more in 2003 marking the 150th Anniversary of Mouton's stewardship under the Rothschild family. In contrast to these artist vacancies vintages such as 1978 when Canadian painter Jean-Paul Riopelle submitted two label arrangements, one each for half the vintage and again in 1993, however this time by force and only for the US market, as the government regulatory agency responsible for label approval deemed the drawn depiction of a young female nude to be pornographic for the domestic market.

For the commissioning of each label a contract is drawn up that gives both Château and artist broad latitude for design. The artist is free to express themselves as would be natural to assume. Baron Philippe retained the ability to reject any design, no matter how famous an artist might be, if it did not suit the Mouton style. Payment was unconventional, no currency to be exchanged, an artist would receive a case of Mouton of the year that he/she illustrated and additional cases from subsequent years.

Popular Artists who have illustrated Mouton-Rothschild labels: Jean Hugo (1946), Jean Cocteau (1947), Georges Braque (1955), Salvador Dali (1958), Matta (1962), Joan Miró (1969), Marc Chagall (1970), Wassily Kandinsky (1971), Pablo Picasso (1973), Robert Motherwell (1974), Andy Warhol (1975), John Huston (1982), Keith Haring (1988), Francis Bacon (1990), Balthus (1993), Gu Gan (1996), Rufino Tamayo (1998), HRH Prince Charles, Prince of Wales (2004), Lucian Freud (2006), Xu Lei (2008), Jeff Koons (2010), Lee Ufan (2013).



Château Mouton-Rothschild 1945

Pauillac, 1er cru classé

Levels: one top shoulder, one upper shoulder; lightly torn capsules, one bin soiled and nicked label, one bin soiled and badly torn label

661 2 bottles per lot \$16,000-24,000

Château Mouton-Rothschild 1959

Pauillac, 1er cru classé

Lot 662 levels: two top shoulder, four upper shoulder, six mid shoulder; scuffed capsules, two torn capsules, two Nicolas stamped labels, one nicked label, two torn labels, bin soiled labels

Lot 663 levels: two top shoulder, two upper shoulder, two mid upper shoulder; three corroded capsules, one torn at top with cork partially exposed, three bin soiled labels, two bin soiled and torn labels, one bin soiled, faded and lightly torn label

662 12 bottles per lot \$18,000-24,000

663 6 „ per lot \$9,000-12,000

Château Mouton-Rothschild 1975

Pauillac, 1er cru classé

Levels: six bottom neck, six top shoulder; lightly oxidized capsules, one torn capsule, six glue stained labels with remnants of tissue, bin soiled labels

In original wooden case

664 12 bottles per lot \$2,600-3,500

Château Mouton-Rothschild 1982

Pauillac, 1er cru classé

Lot 665 level: into neck, lightly bin soiled labels, in original wooden case

Lot 666 level: into neck

665 1 jeroboam per lot \$5,500-7,500

666 1 „

Château Mouton-Rothschild 1986

Pauillac, 1er cru classé

Lot 667 levels: three into neck, three bottom neck; four lightly bin soiled labels

Lot 668 levels: nine into neck, two bottom neck, one top shoulder

Lot 669 levels: five into neck, seven bottom neck; two signs of old seepage, lightly bin soiled labels

Lot 670 levels: eleven into neck, one bottom neck; two torn capsules, one signs of old seepage, one nicked label

Lot 671 levels: six into neck, six bottom neck; three lightly bin soiled labels

Lot 672 levels: eleven into neck, one bottom neck

Lot 673 levels: ten into neck, two bottom neck

Lot 674 levels: six into neck, five bottom neck, one top shoulder; one lightly bin soiled label, one nicked label

All lots in original wooden cases

667 6 magnums per lot \$7,000-9,000

668 12 bottles per lot \$7,000-9,000

669 12 „

670 12 „

671 12 „

672 12 „

673 12 „

674 12 „

Château Mouton-Rothschild 1988

Pauillac, 1er cru classé

Level: top shoulder; corroded capsules with signs of old seepage, lightly bin soiled label

In original wooden case

675 1 imperial per lot \$1,800-2,400

IMPERIAL OF MOUTON SIGNED BY GEORG BASELITZ

The Baron, a fan of both Mouton-Rothschild and Georg Baselitz, had the imperial offered in this sale personally signed by the artist—a true art and wine collector's item!

Château Mouton-Rothschild 1989

Pauillac, 1er cru classé

Lot 676 level: into neck, scuffed label, label signed by Georg Baselitz on base of label

Lot 677 levels: into neck; in original wooden case

676 1 imperial per lot \$2,200-2,800

677 6 magnums per lot \$3,200-4,200



TEILL
HILD MOUTO


NISOM
RÖTHS

NISOM
RÖTHS



1986
la récolte 1986 a pro
291.800 bordelaises et des
7.250 magnums et jérobo
tout en bouteilles au Châ
ma 64^{ème} vendange Bo
Château
Mouton Roth
PAUILLAC
Baron Philippe de Roths

Peinture sur bois réalisée en Haïti par Bernard Séjourné



la récolte 1986 a produit
291.800 bordelaises et demies
7.250 magnums et jéroboams
tout en bouteilles au Château
ma 64^{ème} vendange Baron Philippe
Château
Mouton Rothschild
PAUILLAC
APPELLATION PAUILLAC CONTRÔLÉE
Baron Philippe de Rothschild
PRODUCE OF FRANCE

1986
la récolte 1986 a produit
291.800 bordelaises et demies
7.250 magnums et jéroboams
tout en bouteilles au Châ
ma 64^{ème} vendange Bo
Château
Mouton Roth
PAUILLAC
Baron Philippe de Roths

**Château Mouton-Rothschild 1990***Pauillac, 1er cru classé**Lot 678 level: into neck; lightly corroded capsules**Lot 679 level: into neck**Lot 680 level: top shoulder; lightly corroded capsule with signs of old seepage**Lot 681 level: into neck**All lots in original wooden cases*

678	1 imperial	per lot \$2,000-2,800
679	1 „	
680	1 „	
681	1 „	

Château Mouton-Rothschild 1991*Pauillac, 1er cru classé**Lot 682 level: into neck; wrinkled and lightly bin soiled label**Lot 683 level: into neck**Lot 684 levels: into neck; two slightly crowned capsules, three slight signs of old seepage**Lot 685 levels: into neck**Lot 686-687 levels: into neck; slight signs of old seepage**Lot 688-689 levels: bottom neck or better**Lot 684, 689-692 in original wooden cases**Lot 685-688 in two three-magnum original wooden cases**Parcel: los 686-687, 689-692*

682	1 imperial	per lot \$1,800-2,400
683	1 „	
684	1 „	
685	6 magnums	per lot \$2,600-3,800
686	6 „	
687	6 „	
688	6 „	
689	12 bottles	per lot \$2,600-3,800
690	12 „	
691	12 „	
692	12 „	

Château Mouton-Rothschild 1992*Pauillac, 1er cru classé**Lot 693 level: into neck**Lot 694 level: into neck; bin soiled label**Both lots in original wooden case*

693	1 imperial	per lot \$2,000-2,600
694	1 „	

Château Mouton-Rothschild 1993*Pauillac, 1er cru classé**Lot 695 level: into neck; signs of old seepage, lightly wrinkled Balthus label**Lot 696-697 levels: into neck; US labels**Lot 698 levels: into neck; one slightly raised cork**Lot 699 levels: into neck**All lots in original wooden cases**Parcel: lots 696-697*

695	1 imperial	per lot \$2,000-2,600
696	12 bottles	per lot \$3,000-4,000
697	12 „	
698	12 „	
699	12 „	

Château Mouton-Rothschild 1994*Pauillac, 1er cru classé**All lots in original wooden cases**Parcel: lots 702-703*

700	1 imperial	per lot \$2,400-3,000
701	6 magnums	per lot \$3,500-4,500
702	12 bottles	per lot \$3,500-4,500
703	12 „	

Château Mouton-Rothschild 1995*Pauillac, 1er cru classé**Both lots in two six-bottle original wooden cases**Parcel: lots 704-705*

704	12 bottles	per lot \$3,500-4,500
705	12 „	

Château Mouton-Rothschild 1996*Pauillac, 1er cru classé**In original wooden case*

706	12 bottles	per lot \$3,800-4,800
-----	------------	-----------------------

Château Mouton-Rothschild 1997*Pauillac, 1er cru classé**All lots in original wooden cases**Parcel: lots: 709-711*

707	1 imperial	per lot \$2,000-2,600
708	1 jeroboam	per lot \$1,500-2,000
709	12 bottles	per lot \$3,000-4,000
710	12 „	
711	12 „	



Château Mouton-Rothschild 1998

Pauillac, 1er cru classé

Both lots in original wooden cases

Parcel: lots 712-713

712	12 bottles	<i>per lot</i> \$3,500-4,500
713	12 „	

Château Mouton-Rothschild 1999

Pauillac, 1er cru classé

714	12 bottles	<i>per lot</i> \$3,500-4,500
-----	------------	------------------------------

Château Mouton-Rothschild 2000

Pauillac, 1er cru classé

All lots in original wooden cases

Parcel: lots 715-718

715	12 bottles	<i>per lot</i> \$12,000-18,000
716	12 „	
717	12 „	
718	12 „	

Château Mouton-Rothschild 2001

Pauillac, 1er cru classé

All lots in original wooden cases

719	1 double-magnum	<i>per lot</i> \$1,200-2,000
720	6 magnums	<i>per lot</i> \$3,200-4,200
721	12 bottles	<i>per lot</i> \$3,200-4,200
722	12 „	

Château Mouton-Rothschild 2002

Pauillac, 1er cru classé

All lots in original wooden cases

Parcel: lots 723-726

723	12 bottles	<i>per lot</i> \$3,200-4,200
724	12 „	
725	12 „	
726	12 „	

Château Mouton-Rothschild 2003

Pauillac, 1er cru classé

All lots in original wooden cases

Parcel: lots 727-729

727	12 bottles	<i>per lot</i> \$3,000-4,200
728	12 „	
729	12 „	

Château Mouton-Rothschild 2005

Pauillac, 1er cru classé

Lot 730 in original wooden case

Lot 731 in two six-bottle original wooden cases

730	3 magnums	<i>per lot</i> \$2,200-3,200
731	12 bottles	<i>per lot</i> \$4,500-6,500







THE ELS FOR AUTISM FOUNDATION

The Els for Autism Foundation was established in 2009 by PGA TOUR golfer Ernie Els and his wife Liezl shortly after their son Ben was diagnosed with autism. Els for Autism has foundations in the U.S., Canada, South Africa and the UK. The Foundation's overarching mission is to help people on the autism spectrum fulfill their potential to lead positive, productive and rewarding lives.

In the U.S., to help fulfill its mission Els for Autism is currently building a state-of-the-art Center of Excellence in Jupiter, FL, with a local, national and global reach and is in the middle of a capital campaign to finance the development.

In addition, the Foundation recently introduced Ernie Els #GameON Autism™ Golf, an initiative focused on using golf as a life skills development tool. #GameON Autism Golf clinics have been hosted at courses across the U.S. and most recently South Africa and Canada. The Foundation has plans to roll-out #GameON Autism Golf as a comprehensive program across the U.S. and internationally.

For more information please visit www.elsforautism.com

Source: www.elsforautism.com

VERTICAL LOT OF MOUTON INCLUDING THE LEGENDARY 1945 VINTAGE, PROCEEDS INTENDED TO BENEFIT THE ELS FOR AUTISM FOUNDATION

Château Mouton-Rothschild

Pauillac, 1er cru classé

1945

Level: top shoulder; torn capsule at top, lightly bin soiled label (1)

1947

Level: upper shoulder; lightly torn capsule, lightly bin soiled label (1)

1949

Level: mid low shoulder; bin soiled and nicked label (1)

1950

Level: mid low shoulder; corroded and torn capsule, lightly bin soiled label (1)

1954

Level: bottom neck; torn capsule, lightly bin soiled label, Réserve du Château (1)

1955

Level: mid low shoulder; lightly bin soiled label (1)

1956

Level: top shoulder (1)

1957

Level: top shoulder; slightly crowned capsule, bin soiled label (1)

1959

Level: top shoulder; lightly corroded capsule, lightly bin soiled label (1)

1961

Level: top shoulder; corroded and torn capsule, lightly bin soiled label (1)

1962

Level: top shoulder; crowned capsule, bin soiled label (1)

1965

Level: upper shoulder; torn capsule, badly bin soiled and torn label (1)

1967

Level: top shoulder; lightly oxidized capsule, bin soiled label (1)

1968

Level: bottom neck; corroded and torn capsule, bin soiled label (1)

1969

Level: mid shoulder; lightly oxidized capsule, lightly bin soiled label (1)

1970

Level: top shoulder; badly glue stained label, Réserve du Château (1)

1971

Level: top shoulder; lightly torn capsule, bin soiled label (1)

1974

Level: top shoulder; corroded capsule, lightly bin soiled label (1)

1975

Level: top shoulder (1)

1976

Level: tops shoulder; torn capsule, lightly bin soiled and nicked label (1)

1977

Level: top shoulder; lightly oxidized capsule, lightly torn capsule, nicked label (1)

1979

Level: top shoulder (1)

1981

Level: into neck (1)

1982

Level: into neck; nicked capsule (1)

1983

Level: into neck (1)

1985

Level: into neck (1)

1986

Level: into neck (1)

1987

Level: into neck; torn capsule at top, lightly bin soiled label (1)

1991

Level: into neck (1)

1999

Level: into neck (1)

732 30 bottles per lot \$30,000-50,000



CHATEAU MARGAUX
GRAND CRU CLASSE
VIN



MARGAUX

Margaux is unique among the communes of the Médoc: it is the farthest south (isolated from its three famous cousins to the north, St.-Estèphe, St.-Julien and Pauillac) and is made up of several non-contiguous parcels of vineyard land. The appellation of Margaux encompasses the village of Margaux, of course, as well as the villages of Cantenac, Soussans, Labarde, and Arsac. Ideally, the limestone, chalk, clay and sand of Margaux combine (especially where gravel dominates, facilitating drainage) to make a fragrant and silky wine. More Margaux properties were included in the famous classification of 1855 than any other commune.

Château Margaux has been occupied since at least the 12th century, with the site occupied by a fortified castle known as Lamothe or La Mothe (from motte, a small rise in the land), and wine under names such as "Margou" and "Margous" was known in the 15th-century. With the arrival of the Lestonnac family in the 16th century that wine production became of particular importance, and in the 1570s Pierre de Lestonnac expanded the property and cleared many of the grain fields to make way for vines.

In 1771 wine from the estate became the first claret to be sold at Christie's, and upon visiting Bordeaux in 1787, Thomas Jefferson made note of Château Margaux as one of the "four vineyards of first quality".

Château Margaux 1956

Margaux, 1er cru classé

Levels: one bottom neck, one top shoulder, one mid shoulder; mid shoulder with depressed cork, lightly bin soiled and torn label, all with Mähler Besse neck tags

733 3 bottles *per lot \$600-900*

Château Margaux 1993

Margaux, 1er cru classé

Levels: into neck

In original wooden case

734 12 bottles *per lot \$3,000-4,000*

Château Margaux 1995

Margaux, 1er cru classé

Level: into neck

In original wooden case, damaged lid

735 1 imperial *per lot \$1,500-2,500*

Château Margaux 1995

Margaux, 1er cru classé

Parcel: Lots 736-737

736 12 bottles *per lot \$3,500-4,500*

737 12 ..

Château Margaux 1996

Margaux, 1er cru classé

In original wooden case

738 12 bottles *per lot \$4,500-6,500*

Château Margaux 1997

Margaux, 1er cru classé

In two-six bottle original wooden cases

739 12 bottles *per lot \$3,000-4,000*

Château Margaux 1998

Margaux, 1er cru classé

In two six-bottle original wooden cases

740 12 bottles *per lot \$3,200-4,200*

Château Margaux 1999

Margaux, 1er cru classé

Both lots in original wooden cases

Parcel: lots 741-742

741 12 bottles *per lot \$3,200-4,200*

742 12 ..

Château Margaux 2000

Margaux, 1er cru classé

Both lots in original wooden cases

Parcel: lots 743-744

743 12 bottles *per lot \$6,000-8,000*

744 12 ..

Château Margaux 2002

Margaux, 1er cru classé

Both lots in original wooden cases

Parcel: lots 745-746

745 12 bottles *per lot \$3,000-4,000*

746 12 ..

Château Margaux 2003

Margaux, 1er cru classé

Both lots in original wooden cases

Parcel: lots 747-748

747 12 bottles *per lot \$3,800-4,800*

748 12 ..

Château Margaux 2001

Margaux, 1er cru classé

All lots in original wooden cases

Parcel: lots 750-751

749 3 magnums *per lot \$1,600-2,200*

750 12 bottles *per lot \$3,200-4,500*

751 12 ..



HAUT-BRION

Château Haut-Brion has been highly regarded for many centuries, being mentioned in Samuel Pepy's diary in 1663. In 1935 Haut-Brion was bought by the American banker, Clarence Dillon. His descendants still own the estate in the form of his grand-daughter Joan Dillon who is the President and her son, His Royal Highness Prince Robert of Luxembourg, the Vice President and Managing Director.

Château Haut-Brion 1961

Pessac (Graves), 1er cru classé

Levels: one 5.0cm, two 7.0cm; corroded capsules, one torn label, lightly bin soiled labels

752 3 bottles *per lot \$3,500-5,500*

Château Haut-Brion 1986

Pessac (Graves), 1er cru classé

Lot 753 levels: 2.0cm or better; in original wooden case, missing lid

Lot 754 level: 2.0cm or better

753 12 bottles *per lot \$3,200-4,500*

754 5 „ *per lot \$1,300-1,800*

Château Haut-Brion 1989

Pessac (Graves), 1er cru classé

Levels: 2.5cm or better

In original wooden case

755 12 bottles *per lot \$12,000-16,000*

Château Haut-Brion 1993

Pessac (Graves), 1er cru classé

Lot 756 levels: into neck; one nicked label

Lot 757 levels: 2.5cm or better

Both lots in original wooden cases

756 3 double-magnums *per lot \$2,400-3,500*

757 12 bottles *per lot \$2,400-3,500*

Château Haut-Brion 1994

Pessac (Graves), 1er cru classé

Levels: 1.5cm or better

In original wooden case

758 12 bottles *per lot \$2,800-3,800*

Château Haut-Brion 1997

Pessac (Graves), 1er cru classé

All lots in original wooden cases

Parcel: lots 759-761

759 12 bottles *per lot \$2,600-3,500*

760 12 „

761 12 „

Château Haut-Brion 1998

Pessac (Graves), 1er cru classé

In original wooden case

762 12 bottles *per lot \$3,200-4,200*

Château Haut-Brion 2000

Pessac (Graves), 1er cru classé

In original wooden case

763 6 bottles *per lot \$2,800-3,800*

Château Haut-Brion 2001

Pessac (Graves), 1er cru classé

In original wooden case

764 12 bottles *per lot \$2,800-3,800*

Château Haut-Brion Blanc 1990

Pessac (Graves), cru classé

Levels: 1.5cm or better

In two six-bottle original wooden cases

765 12 bottles *per lot \$5,000-8,000*





CHATEAU HAUT BRION

CHATEAU HAUT BRION



CHATEAU HAUT BRION

1989

CRU CLASSE DE GRAVES

Premier Grand Cru Classe en 1855

Appellation Pessac-Leognan Contrôlee

PRODUCE OF FRANCE

Premier Grand
CHATEAU
HAUT BRION

**EXCEEDINGLY RARE IMPERIAL BOTTLE OF HAUT-BRION
BLANC**

Château Haut-Brion Blanc 1993

Pessac (Graves), cru classé

Level: into neck

In original wooden case

766

1 imperial

per lot \$2,400-3,500





GROUPE DUCLOT BORDEAUX COLLECTION 2000

Groupe Duclot, Bordeaux Collection 2000

Pétras	(1)
Château Lafite-Rothschild	(1)
Château Mouton-Rothschild	(1)
Château Latour	(1)
Château Margaux	(1)
Château Haut-Brion	(1)
Château La Mission Haut-Brion	(1)
Château Cheval-Blanc	(1)
Château Ausone	(1)

In original presentation case #2903

767

9 bottles

per lot \$8,500-13,000



CHÂTEAU
D'YQUEM

**Château d'Yquem 1891***Sauternes, 1er grand cru classé**Level: upper shoulder; bin soiled and damp stained label, re-corked in 1991*768 1 bottle *per lot \$3,500-4,500***Château d'Yquem 1911***Sauternes, 1er grand cru classé**Levels: one upper shoulder, one mid shoulder; mid shoulder with corroded capsule and original cork, upper shoulder re-corked in 1990, lightly bin soiled labels*772 2 bottles *per lot \$7,500-9,500***Château d'Yquem 1900***Sauternes, 1er grand cru classé**Levels: top shoulder; bin soiled and faded labels, both bottles re-corked in 1990*769 2 bottles *per lot \$7,000-9,000***Château d'Yquem 1913***Sauternes, 1er grand cru classé**Levels: one bottom neck, one upper shoulder, one lightly torn capsule, lightly bin soiled labels, one re-corked in 1991, one re-corked in 1996*773 2 bottles *per lot \$3,200-4,500***Château d'Yquem 1901***Sauternes, 1er grand cru classé**Level: low shoulder; cork slightly shrunken, corroded and damaged capsule, bin soiled label*770 1 bottle *per lot \$4,500-5,500***Château d'Yquem 1914***Sauternes, 1er grand cru classé**Level: bottom neck; stained label, re-corked in 1989*774 1 half bottle *per lot \$700-900***Château d'Yquem 1908***Sauternes, 1er grand cru classé**Level: upper shoulder, lightly bin soiled label, re-corked in 1989*771 1 bottle *per lot \$2,600-3,500***Château d'Yquem 1918***Sauternes, 1er grand cru classé**Level: upper shoulder; Château-embossed capsule, branded cork, faded branding revealing 1918, deep punt, no label, hand-written Avery's label*775 1 bottle *per lot \$1,500-2,000*



Château d'Yquem 1921

Sauternes, 1er grand cru classé

Levels: one top shoulder, two upper shoulder; corroded capsules, one re-waxed by the owner over original capsule, one badly bin soiled label, one badly bin soiled and damp stained label, one remains of label, original corks all vintage branded, one Dutch slip label

776 3 bottles per lot \$12,000-18,000

Château d'Yquem 1923

Sauternes, 1er grand cru classé

Level: upper shoulder; original cork, bin soiled and faded label

777 1 bottle per lot \$2,600-3,500



Scott Torrence, VP, Senior Specialist

Château d'Yquem 1925

As we know the trick with old corks is their clean removal, tonight we yielded to the steady hands of David Elsworth who did not disappoint. Warm amber center, as would be expected of such a long cellared vintage the color gradient lightens up around the meniscus; on first nose the bouquet is vigorous, persistent, yet delicate and ripe. Over the many decades time has mellowed the youthful honeysuckle and quince to more evolved aromas and flavors such as crème brûlée, oven poached pear and orange zest. Finely balanced, neither heavy nor too light, acidity spot on. Yquem is nearly always perfect. This was an amazing example with plenty of potential.

Château d'Yquem 1925

Sauternes, 1er grand cru classé

Four original corks, levels: two bottom neck, two upper shoulder; corroded capsules, badly bin soiled and faded labels, one bin soiled and stained; one bottle re-corked in 1991 level: bottom neck, lightly bin soiled label

778 5 bottles per lot \$11,000-16,000

Château d'Yquem 1927

Sauternes, 1er grand cru classé

Level: bottom neck; lightly bin soiled labels, re-corked in 1997

779 1 bottle per lot \$2,000-3,000

Château d'Yquem 1928

Sauternes, 1er grand cru classé

Level: mid-upper shoulder; bin soiled and faded label, re-corked in 1990

780 1 bottle per lot \$2,000-3,000

Château d'Yquem 1929

Sauternes, 1er grand cru classé

Level: top shoulder; original cork with Château and vintage mark on capsule, badly bin soiled label

781 1 bottle per lot \$2,000-3,000

Château d'Yquem 1933

Sauternes, 1er grand cru classé

One bottle with original cork, level: top shoulder; lightly corroded capsule, bin soiled and slightly faded label. Five bottles re-corked (two in 1993, one in 1994, two in 1996) levels: two into neck, three top shoulder, one slightly damaged label, three lightly bin soiled labels

782 6 bottles per lot \$3,800-5,500

**Château d'Yquem 1935**

Sauternes, 1er grand cru classé

One original cork, level: upper shoulder, lightly bin soiled label.

Three re-corked (one in 1991, two in 1996) levels: two bottom neck, one upper shoulder, lightly bin soiled labels

783 4 bottles per lot \$4,800-7,500

Château d'Yquem 1936

Sauternes, 1er grand cru classé

Three original corks, levels: two top shoulder, one upper shoulder, lightly corroded capsules. Five re-corked (one in 1990, three in 1996, one in 1997) levels: bottom neck, one lightly torn label

784 8 bottles per lot \$4,500-6,000

Château d'Yquem 1936

Sauternes, 1er grand cru classé

Three original corks, levels: two top shoulder, one upper shoulder, lightly corroded capsules. Five re-corked (one in 1990, three in 1996, one in 1997) levels: bottom neck, one lightly torn label

784 8 bottles per lot \$4,500-6,000

Château d'Yquem 1937

Sauternes, 1er grand cru classé

Three original corks, levels: bottom neck, short, lightly corroded capsules, vintage embossed, two slightly bin soiled labels, one very badly bin soiled, damp stained and partially missing label, remains of label adhered to bottle with clear tape. Two bottles re-corked (one in 1991 and one 1989) one wine stained label, one lightly bin soiled label

785 5 bottles per lot \$9,000-12,000

Château d'Yquem 1937

Sauternes, 1er grand cru classé

Three original corks, levels: bottom neck, short, lightly corroded capsules, vintage embossed, two slightly bin soiled labels, one very badly bin soiled, damp stained and partially missing label, remains of label adhered to bottle with clear tape. Two bottles re-corked (one in 1991 and one 1989) one wine stained label, one lightly bin soiled label

785 5 bottles per lot \$9,000-12,000

Château d'Yquem 1938

Sauternes, 1er grand cru classé

Level: bottom neck; torn and bin soiled label

786 1 half bottle per lot \$450-650

Château d'Yquem 1935

Sauternes, 1er grand cru classé

One original cork, level: upper shoulder, lightly bin soiled label.

Three re-corked (one in 1991, two in 1996) levels: two bottom neck, one upper shoulder, lightly bin soiled labels

783 4 bottles per lot \$4,800-7,500

Château d'Yquem 1939

Sauternes, 1er grand cru classé

Levels: bottom neck, top shoulder; one lightly corroded, torn capsule, lightly bin soiled label, bottles re-corked in 1991

787 2 bottles per lot \$2,400-3,600

**Château d'Yquem 1940**

Sauternes, 1er grand cru classé

Levels: three top shoulder, one upper shoulder; three corroded and lightly torn capsules, one bottle with no label, handwritten Château and vintage, Château and vintage embossed capsule and cork, two original corks, one bottle re-corked in 1989, one re-corked in 1991

788 4 bottles per lot \$2,800-3,600

Château d'Yquem 1941

Sauternes, 1er grand cru classé

Level: upper shoulder; bin soiled label

789 1 bottles per lot \$650-850

Château d'Yquem 1943

Sauternes, 1er grand cru classé

Level: bottom neck, green glass, corroded and torn capsule, bin soiled label

790 1 bottle per lot \$450-650

Château d'Yquem 1945

Sauternes, 1er grand cru classé

Levels: one into neck, two bottom neck; one lightly bin soiled label, two remains of bin soiled labels, vintage no visible on labels, but confirmed on capsule and cork

791 3 bottles per lot \$6,500-9,500

Château d'Yquem 1946

Sauternes, 1er grand cru classé

Six original corks, levels: two top shoulder, four upper shoulder, corroded capsules, bin soiled labels, two damp stained labels, two faded. Six re-corked bottles (one in 1988, one in 1998, four in 2000) levels: four bottom neck, two upper shoulder; lightly bin soiled labels

792 12 bottles per lot \$8,500-12,000

Château d'Yquem 1947

Sauternes, 1er grand cru classé

Level: bottom neck; lightly bin soiled labels, re-corked in 1991

793 1 magnum per lot \$4,000-6,000

Château d'Yquem 1948

Sauternes, 1er grand cru classé

Four original corks: one bottom neck, three top shoulder; corroded capsules, one damaged capsule, bin soiled and stained labels, one mostly missing label, vintage confirmed on cork. Four bottles re-corked in 2000: top shoulder; lightly bin soiled labels

794 8 bottles per lot \$4,800-6,500

Château d'Yquem 1950

Sauternes, 1er grand cru classé

Levels: top shoulder, one torn capsule, lightly bin soiled labels

795 2 half bottles per lot \$900-1,200



796	Château d'Yquem 1950 <i>Sauternes, 1er grand cru classé</i> Levels: bottom neck; lightly corroded capsules, one previously cut and torn to reveal Château and vintage embossed cork, bin soiled and torn label, one missing label with vintage embossed capsule 4 bottles per lot \$3,500-4,500	803	Château d'Yquem 1958 <i>Sauternes, 1er grand cru classé</i> Levels: nine bottom neck, one top shoulder; corroded capsules, one torn capsule, bin soiled labels, two torn and partially missing 10 bottles per lot \$3,000-4,000
797	Château d'Yquem 1953 <i>Sauternes, 1er grand cru classé</i> Levels: bottom neck; lightly corroded capsules, bin soiled and damp stained labels 3 bottles per lot \$3,000-4,500	804	Château d'Yquem 1959 <i>Sauternes, 1er grand cru classé</i> Levels: into neck; one corroded capsule, one bottle with no label, one remains of bin soiled label, vintage embossed on capsule 2 half-bottles per lot \$1,300-1,800
798	Château d'Yquem 1954 <i>Sauternes, 1er grand cru classé</i> Levels: one top shoulder, one upper shoulder; top shoulder with badly corroded capsule, and partially missing capsule, revealing Château and vintage branded cork, remains of label, vintage confirmed on capsule and cork, one corroded capsule, bin soiled and stained label 2 bottles per lot \$900-1,300	805	Château d'Yquem 1959 <i>Sauternes, 1er grand cru classé</i> Level: into neck, lightly bin soiled label 1 bottle per lot \$1,300-1,800
799	Château d'Yquem 1955 <i>Sauternes, 1er grand cru classé</i> Levels: five bottom neck, two upper shoulder, two mid shoulder, corroded capsules, four torn capsules, six bin soiled labels, three badly bin soiled labels, one signs of old seepage 9 bottles per lot \$6,000-8,000	806	Château d'Yquem 1960 <i>Sauternes, 1er grand cru classé</i> Levels: two into neck, one bottom neck; bin soiled labels 3 bottles per lot \$600-900
800	Château d'Yquem 1956 <i>Sauternes, 1er grand cru classé</i> Levels: six bottom neck or better, one top shoulder; two torn capsules, one wine stained label, bin soiled labels, one torn label, one damaged label with Nicholas stamp, one stained label 7 bottles per lot \$2,000-3,000	807	Château d'Yquem 1961 <i>Sauternes, 1er grand cru classé</i> Levels: bottom neck; lightly corroded capsules, bin soiled and faded labels 5 bottles per lot \$1,900-2,400
801	Château d'Yquem 1956 <i>Sauternes, 1er grand cru classé</i> Level: top shoulder; corroded capsule 1 bottle per lot \$300-400	808	Château d'Yquem <i>Sauternes, 1er grand cru classé</i> 1965 Level: bottom neck; lightly torn label (1) 1966 Levels: one bottom neck, one top shoulder; lightly corroded capsules, two bin soiled labels, one bin soiled and faded label (3) 1967 Level: bottom neck; bin soiled label half-bottle (1) 4 bottles and 1 half-bottle per lot \$1,800-2,400
802	Château d'Yquem 1957 <i>Sauternes, 1er grand cru classé</i> Levels: two bottom neck, one top shoulder; one with slightly darker level, one bin soiled, torn and partially missing label 3 bottles per lot \$2,200-2,800	809	Château d'Yquem 1967 <i>Sauternes, 1er grand cru classé</i> Levels: three bottom neck, one top shoulder; lightly corroded capsules, one scuffed capsule 4 bottles per lot \$2,800-3,500

**Château d'Yquem***Sauternes, 1er grand cru classé***1969***Level: bottom neck; bin soiled label* (1)**1970***Levels: bottom neck; lightly corroded capsules, lightly bin soiled labels* (2)**1973***Levels: bottom neck or better; one lightly torn label, one wine stained label* (2)**1977***Level: into neck; bin soiled label* (1)810 6 bottles *per lot \$1,300-1,900*Noah May, *Specialist***Château d'Yquem 1975**

A huge d'Yquem. Rich, thick and extracted. The pure, viscous wine, is one of the greatest modern vintages, a rival to the classic vintages of old. The vintage was known for high levels of botrytis which led to wines destined to a long life, enjoy today, or tuck away for another decade or two, this wine's charms are going nowhere.

Château d'Yquem 1975*Sauternes, 1er grand cru classé**Level: bottom neck; lightly bin soiled labels*811 3 bottles *per lot \$1,300-1,800***Château d'Yquem 1981***Sauternes, 1er grand cru classé**Levels: bottom neck or better; one torn capsule, lightly bin soiled labels*812 6 bottles *per lot \$1,200-1,800***Château d'Yquem 1982***Sauternes, 1er grand cru classé**Levels: bottom neck or better**In original wooden case*813 12 bottles *per lot \$3,000-4,200***Château d'Yquem***Sauternes, 1er grand cru classé***1983***Levels: into neck; remains of tissue stuck on label* (3)**1983***Levels: bottom neck or better* half-bottles (3)814 3 bottles and 3 half-bottles *per lot \$1,000-1,500***Château d'Yquem 1983***Sauternes, 1er grand cru classé**Lot 515 levels: ten bottom neck, two top shoulder; one crowned capsule**In original wooden case*815 12 bottles *per lot \$2,600-3,200***Château d'Yquem 1986***Sauternes, 1er grand cru classé**Levels: bottom neck; damp stained labels*816 3 bottles *per lot \$600-900***Château d'Yquem 1987***Sauternes, 1er grand cru classé**Levels: into neck*817 3 magnums *per lot \$900-1,200***Château d'Yquem***Sauternes, 1er grand cru classé***1987***Levels: into neck***1987** (1)818 1 bottles and 6 half-bottles *per lot \$600-800***Château d'Yquem 1988***Sauternes, 1er grand cru classé**Levels: into neck*819 5 bottles *per lot \$1,200-1,800***Château d'Yquem 1995***Sauternes, 1er grand cru classé**All lots in original wooden cases**Parcel: lots 820-822, 823-824*820 12 bottles *per lot \$1,200-1,800*

821 12 ,,

822 12 ,,

823 24 half bottles *per lot \$1,200-1,800*

824 24 ,,

Château d'Yquem 1996*Sauternes, 1er grand cru classé**Lot 825 in original wooden case*825 24 half bottles *per lot \$1,500-2,000*826 22 ,, *per lot \$1,300-1,900*



Château d'Yquem 1997

Sauternes, 1er grand cru classé

Both lots in original wooden cases

Parcel: lots 827-828

827 24 half bottles *per lot* \$1,800-2,400

828 24 ..

Château d'Yquem 2001

Sauternes, 1er grand cru classé

Lot 829 in two original wooden cases

Lot 830 in original wooden case

Lot 831 in two original wooden cases

Lot 832 twelve half bottles in original wooden case

829 12 bottles *per lot* \$4,800-7,000

Château d'Yquem 2001

Sauternes, 1er grand cru classé

830 6 bottles *per lot* \$2,400-3,500

Château d'Yquem 2001

Sauternes, 1er grand cru classé

831 24 half bottles *per lot* \$4,800-7,000

832 24 ..

Château d'Yquem 2004

Sauternes, 1er grand cru classé

Lots 833-835 in original wooden cases

Lots 836-838 in two original wooden cases

Parcel: lots 833-835, 836-838

833 12 bottles *per lot* \$1,500-2,000

834 12 ..

835 12 ..

836 24 half bottles *per lot* \$1,500-2,000

837 24 ..

838 24 ..

Château d'Yquem 2009

Sauternes, 1er grand cru classé

In two original wooden cases

839 24 half bottles *per lot* \$4,000-6,000

L'Extravagant de Doisy-Daëne 2001

Sauternes

In original wooden case

840 24 half bottles *per lot* \$3,000-4,000

PRODUCE OF FRANCE



01

200

L'Extravagant
de Doisy-Daëne

Lot 840



CALON-SEGUR

Upon the second day of our Bavarian cellar pack up we were already seventeen pallets deep in wine for the sale. Taking in the scope and depth of this first of two major cellars I asked Herr von Staff what of all his wines is the one he most enjoyed returning to again and again. With a wide smile, "Calon-Segur without a doubt" he replied simply.

Château Calon-Ségur 1996

*Saint-Estéphe, 3ème cru classé
All lots in original wooden cases
Parcel: lots 841-843*

841	12 bottles	<i>per lot \$700-900</i>
842	12 ,,	
843	12 ,,	

Château Calon-Ségur 1997

*Saint-Estéphe, 3ème cru classé
Both lots in original wooden cases
Parcel: lots 844-845*

844	12 bottles	<i>per lot \$600-800</i>
845	12 bottles	<i>per lot \$600-800</i>

Château Calon-Ségur 1999

*Saint-Estéphe, 3ème cru classé
Lightly scuffed label*

846	1 jeroboam	<i>per lot \$300-500</i>
-----	------------	--------------------------

Château Calon-Ségur 2000

*Saint-Estéphe, 3ème cru classé
Both lots in original wooden cases
Parcel: lots 847-848*

847	12 bottles	<i>per lot \$800-1,000</i>
848	12 ,,	

Château Calon-Ségur 2001

*Saint-Estéphe, 3ème cru classé
All lots in original wooden cases
Parcel: lots 849-852*

849	12 bottles	<i>per lot \$600-800</i>
850	12 ,,	
851	12 ,,	
852	12 ,,	

**Château Calon-Ségur 2002**

*Saint-Estéphe, 3ème cru classé
Both lots in original wooden cases
Parcel: lots 853-854*

- | | | |
|-----|------------|--------------------------|
| 853 | 12 bottles | <i>per lot \$550-750</i> |
| 854 | 12 ,, | |

Château Calon-Ségur 2003

*Saint-Estéphe, 3ème cru classé
All lots in original wooden cases
Parcel: lots 855-857*

- | | | |
|-----|------------|--------------------------|
| 855 | 12 bottles | <i>per lot \$700-900</i> |
| 856 | 12 ,, | |
| 857 | 12 ,, | |

Château Cos d'Estournel 2003

*Saint-Estéphe, 2ème cru classé
In original wooden case*

- | | | |
|-----|------------|------------------------------|
| 858 | 12 bottles | <i>per lot \$1,400-2,000</i> |
|-----|------------|------------------------------|

Château Cos d'Estournel 1970

*Saint-Estéphe, 2ème cru classé
Lot 859 levels: bottom neck; lightly tissue stained labels
Lot 860 levels: three bottom neck, seven top shoulder, one upper
shoulder; lightly tissue stained labels*

- | | | |
|-----|------------|----------------------------|
| 859 | 12 bottles | <i>per lot \$900-1,300</i> |
| 860 | 11 ,, | <i>per lot \$800-1,200</i> |

Château Cos d'Estournel 1997

*Saint-Estéphe, 2ème cru classé
Both lots in two six-bottle original wooden cases
Parcel: lots 861-862*

- | | | |
|-----|------------|----------------------------|
| 861 | 12 bottles | <i>per lot \$800-1,000</i> |
|-----|------------|----------------------------|

Château Cos d'Estournel 1997

Saint-Estéphe, 2ème cru classé

- | | | |
|-----|------------|----------------------------|
| 862 | 12 bottles | <i>per lot \$800-1,000</i> |
|-----|------------|----------------------------|



Noah May, Specialist

Château Montrose 1990

Montrose 1990 is a powerhouse of a wine and one of the best 1990s, still fresh and tannic, it is still evolving to exhibit new characteristics.

Château Montrose 1990

*Saint-Estéphe, 2ème cru classé
Both lots with levels into neck; lightly bin soiled labels
Both lots in original wooden cases
Parcel: lots 863-864*

- | | | |
|-----|------------|------------------------------|
| 863 | 12 bottles | <i>per lot \$5,000-7,000</i> |
| 864 | 12 ,, | |

Château Montrose 2000

*Saint-Estéphe, 2ème cru classé
In original wooden case*

- | | | |
|-----|------------|------------------------------|
| 865 | 12 bottles | <i>per lot \$1,200-1,800</i> |
|-----|------------|------------------------------|

Château Montrose 2001

*Saint-Estéphe, 2ème cru classé
Both lots in original wooden cases
Parcel: lots 866-867*

- | | | |
|-----|-----------|----------------------------|
| 866 | 6 magnums | <i>per lot \$800-1,000</i> |
| 867 | 6 magnums | <i>per lot \$800-1,000</i> |

Château Montrose 2003

*Saint-Estéphe, 2ème cru classé
In original wooden case*

- | | | |
|-----|------------|----------------------------|
| 868 | 12 bottles | <i>per lot \$800-1,000</i> |
|-----|------------|----------------------------|

LYNCH-BAGES

The out of date nature of the 1855 classification system is clearly demonstrated when reflecting on the quality of Château Lynch-Bages, originally deigned a fifth growth. Tremendous wines in the late 1950s and early 1960s clearly indicated the outstanding potential of the property. After sharing a down period of the late 1960s and early 1970s experienced by many properties in Bordeaux, fortunes began a reversal when Jean-Michel Cazes took over the property from his father in 1973. He appointed the talented Daniel Llose as business director in 1976 and culminated massive investment in Lynch-Bages with 25 massive steel vats in 1980 to cleanup and control the winemaking process. The percentage of new oak used the Grand Vin was also more than doubled. This investment was fortuitously evinced by the exceptionally good 1982 and 1983 vintages, both bringing forth the fleshy, generous style of wine healthily promulgated by Lynch-Bages

Château Lynch-Bages 1997

*Pauillac, 5ème cru classé
In two six-bottle original wooden cases*

- | | | |
|-----|------------|----------------------------|
| 869 | 12 bottles | <i>per lot \$800-1,000</i> |
|-----|------------|----------------------------|

Château Lynch-Bages 1998

*Pauillac, 5ème cru classé
In two six-bottle original wooden cases*

- | | | |
|-----|------------|------------------------------|
| 870 | 12 bottles | <i>per lot \$1,000-1,500</i> |
|-----|------------|------------------------------|

Château Lynch-Bages 1999

*Pauillac, 5ème cru classé
All lots in original wooden cases
Parcel: lots 871-872*

- | | | |
|-----|------------|------------------------------|
| 871 | 6 magnums | <i>per lot \$1,000-1,500</i> |
| 872 | 12 bottles | <i>per lot \$1,000-1,500</i> |
| 873 | 12 ,, | |
| 874 | 12 ,, | |



12 Billes



1990



Château Lynch-Bages 2000

Pauillac, 5ème cru classé

All lots in original wooden cases

Parcel: lots 876-880

875 6 magnums *per lot \$1,700-2,200*

Château Lynch-Bages 2000

Pauillac, 5ème cru classé

All lots in original wooden cases

Parcel: lots 876-880

876 12 bottles *per lot \$1,700-2,200*

877 12 „

878 12 „

879 12 „

880 12 „

Château Pichon-Longueville, Baron 1989

Pauillac, 2ème cru classé

Lot 881 levels: into neck, one damaged base of bottle

Lot 882 levels: into neck; lightly oxidized capsule, lightly bin soiled labels

Lot 883 levels: bottom neck or better

All lots in original wooden cases

881 12 bottles *per lot \$2,200-3,200*

882 12 „

883 12 „

Château Pichon-Longueville, Baron 1996

Pauillac, 2ème cru classé

In original wooden case

884 12 bottles *per lot \$1,200-1,800*

Château Pichon-Longueville, Baron 1997

Pauillac, 2ème cru classé

In original wooden case

885 12 bottles *per lot \$700-900*

Château Pichon-Longueville, Baron 1999

Pauillac, 2ème cru classé

In original wooden case

886 12 bottles *per lot \$800-1,000*

Château Pichon-Longueville, Baron 2000

Pauillac, 2ème cru classé

In original wooden case

887 12 bottles *per lot \$1,600-2,200*

Château Pichon-Longueville, Baron 2003

Pauillac, 2ème cru classé

In original wooden case

888 12 bottles *per lot \$1,000-1,500*

Château Pichon-Longueville, Baron 2005

Pauillac, 2ème cru classé

Both lots in original wooden cases

Parcel: lots 889-890

889 12 bottles *per lot \$1,100-1,600*

890 12 „

891 12 „



1er GRAND VIN



PICHON-LONGUEVILLE

1989

12 Billes



PRODUCE

OF FRANCE



**CHATEAU PICHON LONGUEVILLE
COMTESSE DE LALANDE**

1982

GRAND CRU CLASSE

600 cl

PAUILLAC

APPELLATION PAUILLAC CONTROLEE

CHATEAU PICHON LONGUEVILLE COMTESSE DE LALANDE
SOCIÉTÉ CIVILE - PAUILLAC - GIRONDE

MIS EN BOUTEILLE AU CHATEAU



PICHON-LALANDE

Vines were planted on the area to become known as the Pichon estate in the late 17th century by Pierre de Rauzan, the father-in-law of Jacques de Pichon. Pichon soon inherited the land and due to its close geographical as well as quality proximity to Latour the wine soon garnered an excellent reputation. After the death of Baron Jean-Pierre de Pichon in 1850 at the age of 95, the Pichon estate was divided with three-fifths going to the three daughters, becoming "Lalande" and the remainder to the two sons or the "Baron" side.

The modern era and rebirth of Pichon-Lalande was ushered in when Madame May-Elaine de Lencquesaing assumed majority control bringing on exacting controls, numerous improvements and personally leading the blind tasting during assemblage. High percentages of Merlot and Cabernet Franc as well as a good portion of the vineyards lying in St. Julien allow for a complex and supple style with distinctive aromas of olive, crème de cassis and cedar. While concentration and depth are provided for by the relatively high extract in the winemaking as well as the significant Petit Verdot component added to the Cabernet Sauvignon backbone.

Château Pichon-Longueville, Lalande 1982

Pauillac, 2ème cru classé

Level: into neck; slightly crowned capsule

In original wooden case

892 1 imperial *per lot \$4,000-5,000*

Château Pichon-Longueville, Lalande 1983

Pauillac, 2ème cru classé

Levels: into neck; one lightly bin soiled label

In original wooden case

893 6 magnums *per lot \$1,500-2,200*

Château Pichon-Longueville, Lalande 1988

Pauillac, 2ème cru classé

Levels: bottom neck or better; lightly oxidized capsules

In original wooden case

894 12 bottles *per lot \$1,200-1,800*

Château Pichon-Longueville, Lalande 1990

Pauillac, 2ème cru classé

All lots: levels: bottom neck or better; lightly bin soiled labels

All lots in two six-bottle original wooden cases

Parcel: lots 895-898

895 12 bottles *per lot \$1,200-1,800*

896 12 ,,

897 12 ,,

898 12 ,,

Château Pichon-Longueville, Lalande 1992

Pauillac, 2ème cru classé

Levels: into neck; badly bin soiled labels

In original wooden case

899 6 magnums *per lot \$700-900*

Château Pichon-Longueville, Lalande 1993

Pauillac, 2ème cru classé

Levels: into neck

In original wooden case

900 12 bottles *per lot \$800-1,200*

Château Pichon-Longueville, Lalande 1995

Pauillac, 2ème cru classé

All lots with levels into neck

Lots 901-904 in two six-bottle original wooden cases

Lot 905 in original wooden cases

Parcel: lots 901-904

901 12 bottles *per lot \$1,600-2,200*

902 12 ,,

903 12 ,,

904 12 ,,

905 6 ,, *per lot \$800-1,100*

Château Pichon-Longueville, Lalande 1996

Pauillac, 2ème cru classé

In original wooden case

906 12 bottles *per lot \$1,800-2,800*

Château Pichon-Longueville, Lalande 1997

Pauillac, 2ème cru classé

All lots in original wooden cases

Parcel: lots 907-909

907 12 bottles *per lot \$800-1,000*

908 12 ,,

909 12 ,,

Château Pichon-Longueville, Lalande 1998

Pauillac, 2ème cru classé

910 12 bottles *per lot \$1,000-1,500*

911 12 ,,

Château Pichon-Longueville, Lalande 2000

Pauillac, 2ème cru classé

In original wooden case

912 12 bottles *per lot \$1,700-2,400*



Château Pichon-Longueville, Lalande 2001

Pauillac, 2ème cru classé

All lots in original wooden cases

Parcel: lots 913-915,916-924

913	6 magnums	<i>per lot</i>	\$1,000-1,500
914	6 „		
915	6 „		
916	12 bottles	<i>per lot</i>	\$1,000-1,500
917	12 „		
918	12 „		
919	12 „		
920	12 „		
921	12 „		
922	12 „		
923	12 „		
924	12 „		

Château Pichon-Longueville, Lalande 2002

Pauillac, 2ème cru classé

All lots in original wooden cases

Parcel: lots 925-927

925	12 bottles	<i>per lot</i>	\$900-1,200
926	12 „		
927	12 „		

Château Pichon-Longueville, Lalande 2003

Pauillac, 2ème cru classé

Parcel: lots 928-930

928	12 bottles	<i>per lot</i>	\$1,000-1,500
929	12 „		
930	12 „		



Per Holmberg, *VP, Head of Department*

Château Ducru-Beaucaillou 1995

Ducru-Beaucaillou produced two back to back extraordinary wines in 1995 and 1996. Both wines are concentrated with great balance and a very long complex finish. They are starting to drink well now, the 1995 is slightly more approachable now than the 1996. The wines will continue to evolve gracefully for another decade or two

Château Ducru-Beaucaillou 1995

Saint-Julien, 2ème cru classé

In original wooden case

931	12 bottles	<i>per lot</i>	\$1,400-1,800
-----	------------	----------------	---------------

Château Ducru-Beaucaillou 1996

Saint-Julien, 2ème cru classé

All lots in original wooden cases

Parcel: lots 932-934

932	12 bottles	<i>per lot</i>	\$1,600-2,000
933	12 „		
934	12 „		

Château Ducru-Beaucaillou 1997

Saint-Julien, 2ème cru classé

Both lots in original wooden cases

Parcel: lots 935-936

935	12 bottles	<i>per lot</i>	\$900-1,300
936	12 „		

Château Ducru-Beaucaillou 2000

Saint-Julien, 2ème cru classé

Parcel: lots 937-942

937	12 bottles	<i>per lot</i>	\$1,500-2,600
938	12 „		
939	12 „		
940	12 „		
941	12 „		
942	12 „		

**Château Ducru-Beaucaillou 2003***Saint-Julien, 2ème cru classé**In original wooden case*943 12 bottles *per lot \$1,200-1,800***Château Gruaud-Larose 1997***Saint-Julien, 2ème cru classé**Lots 944- 945 in two six bottle original wooden cases**Lots 946-948 in original wooden cases**Parcel: lots 944-948*944 12 bottles *per lot \$450-650*

945 12 ,,

946 12 ,,

947 12 ,,

948 12 ,,

Château Gruaud-Larose 1999*Saint-Julien, 2ème cru classé**In original wooden case*949 24 half-bottles *per lot \$550-750***Château Gruaud-Larose 2000***Saint-Julien, 2ème cru classé**All lots in original wooden cases**Parcel: lots 950-953*950 12 bottles *per lot \$900-1,300*

951 12 ,,

952 12 ,,

953 12 ,,

Château Léoville-Barton 1994*Saint-Julien, 2ème cru classé**Levels: into neck**In original wooden case*954 12 bottles *per lot \$500-700***Château Léoville-Barton 1998***Saint-Julien, 2ème cru classé**All lots in original wooden cases**Parcel: lots 955-957*955 12 bottles *per lot \$600-800*

956 12 ,,

957 12 ,,

Château Léoville-Barton 1999*Saint-Julien, 2ème cru classé**In original wooden case*958 6 magnums *per lot \$550-750***Château Léoville-Barton 2000***Saint-Julien, 2ème cru classé**All lots in original wooden cases**Parcel: lots 959-963*959 12 bottles *per lot \$1,000-1,500*

960 12 ,,

961 12 ,,

962 12 ,,

963 12 ,,

Château Léoville-Barton 2003*Saint-Julien, 2ème cru classé**In original wooden case*964 12 bottles *per lot \$750-950***Château Léoville-Barton 2009***Saint-Julien, 2ème cru classé**In original wooden case*965 6 magnums *per lot \$650-850***LEOVILLE-LAS-CASES**

Of the three Léovilles, Las-Cases, Poyferré, and Barton, Las-Cases is universally the most admired. The estate, which stretches all the way from the edge of the town of St. Julien to Château Latour in Pauillac, is still one of Bordeaux's largest, though in 1840 the main estate was partially sold to Hugh Barton and Baron de Poyferré. Estate size notwithstanding, Léoville-Las-Cases's wines are made with fanatical precision, once by the late Michel Delon but now by his son, Jean-Hubert using grapes from the "grand clos", a vineyard enclosed by a thin wall and marked at the entrance by a large arch and notable Bordeaux landmark. Over time, Léoville-Las-Cases has retained its reputation as the greatest wine of St. Julien.

Château Léoville-Las-Cases 1956*Saint-Julien, 2ème cru classé**Lot 966 levels: one top shoulder, two upper shoulder, five mid shoulder, four low shoulder; corroded capsules, three torn capsules, badly bin soiled and torn labels, three bottles with vintage not visible and believed to be 1956 from cellar records**Lot 967 levels: three upper shoulder, eight mid shoulder, one mid low shoulder; corroded capsules, one torn capsule, badly bin soiled and torn labels, five bottles with vintage not visible and believed to be 1956 from cellar records*966 12 bottles *per lot \$1,200-1,800*

967 12 ,,

Château Léoville-Las-Cases 1962*Saint-Julien, 2ème cru classé**Levels: four top shoulder; one upper shoulder; lightly bin soiled labels*968 5 bottles *per lot \$1,000-1,500*

**Château Léoville-Las-Cases 1994***Saint-Julien, 2ème cru classé**Levels: into neck; one signs of old seepage and wine stained label**In original wooden case*969 12 bottles *per lot \$1,200-1,600***Château Léoville-Las-Cases 1996***Saint-Julien, 2ème cru classé**In original wooden case*970 12 bottles *per lot \$2,000-3,000***Château Léoville-Las-Cases 1997***Saint-Julien, 2ème cru classé**Both lots in original wooden cases**Parcel: lots 971-972*971 6 magnums *per lot \$1,000-1,500*972 6 magnums *per lot \$1,000-1,500***Château Léoville-Las-Cases 1999***Saint-Julien, 2ème cru classé**In original wooden case*973 24 half-bottles *per lot \$1,500-2,000***Château Léoville-Las-Cases 2000***Saint-Julien, 2ème cru classé*974 12 bottles *per lot \$2,200-3,200***Château Léoville-Las-Cases 2003***Saint-Julien, 2ème cru classé**All lots in original wooden cases**Parcel: lots 975-977*975 12 bottles *per lot \$1,300-1,800*

976 12 „

977 12 „

Château Léoville-Las-Cases 2009*Saint-Julien, 2ème cru classé**Both lots in original wooden cases**Parcel: lots 978-979*978 6 magnums *per lot \$1,800-2,500*979 6 magnums *per lot \$1,800-2,500***LEOVILLE-POYFERRÉ**

When the wife of the Baron de Poyferré-Céres bought a portion of the Las Cases property from her sister, Château Léoville-Poyferré was born. During the second half of the 19th-century and the first half of the 20th-century, Château Léoville-Poyferré enjoyed a reputation equal to that of its 1st growth brothers, causing Biarnéz to remark, "Et je ne comprends pas quel expert inhabile a pu dans les seconds classer le Léoville." Although all three Châteaux bearing the Léoville moniker are classified as second growths, Poyferré, recently, has always seemed to garner the bronze medal for its traditional if somewhat reticent St. Julien expression. Poyferré broke out of its shell with a stupendous effort in the 1990 vintage and has continued its hot streak since. Léoville-Poyferré is a powerfully impressive backwards wine that marries the distinctive qualities of traditional Bordeaux with the quality controls of modern winemaking.

Château Léoville-Poyferré 1997*Saint-Julien, 2ème cru classé**All lots in original wooden cases**Parcel: lots 980-984*980 12 bottles *per lot \$500-700*

981 12 „

982 12 „

983 12 „

984 12 „

Château Léoville-Poyferré 2002*Saint-Julien, 2ème cru classé**All lots in original wooden cases**Parcel: lots 985-990*985 12 bottles *per lot \$550-750*

986 12 „

987 12 „

988 12 „

989 12 „

990 12 „

Château Léoville-Poyferré 2003*Saint-Julien, 2ème cru classé**Both lots in original wooden cases**Parcel: lots 991-992*991 12 bottles *per lot \$1,000-1,500*

992 12 „

**PALMER****Château Palmer 1994***Cantenac (Margaux), 3ème cru classé**Level: into neck**In original wooden case*993 1 imperial *per lot \$1,200-1,800***Château Palmer 2000***Cantenac (Margaux), 3ème cru classé**In original wooden case*994 12 bottles *per lot \$2,400-3,400***Château Palmer 2001***Cantenac (Margaux), 3ème cru classé**In original wooden case, missing lid*995 12 bottles *per lot \$1,600-2,200***Château Palmer 2003***Cantenac (Margaux), 3ème cru classé**All lots in original wooden cases**Parcel: lots 996-999*996 12 bottles *per lot \$1,500-2,000*

997 12 ,,

998 12 ,,

999 12 ,,

LA MISSION-HAUT-BRION**Château La Mission-Haut-Brion 1999***Pessac (Graves), cru classé**Lot 1000 in original wooden case*1000 12 bottles *per lot \$1,500-2,000*1001 6 bottles *per lot \$750-1,000***Château La Mission-Haut-Brion 2001***Pessac (Graves), cru classé**In original wooden case*1002 12 bottles *per lot \$1,500-2,000***Château La Mission-Haut-Brion 2002***Pessac (Graves), cru classé**In original wooden case*1003 12 bottles *per lot \$1,200-1,700*

1004 12 ,,

Château La Mission-Haut-Brion 2003*Pessac (Graves), cru classé**In original wooden case*1005 12 bottles *per lot \$1,400-2,000***Château La Mission-Haut-Brion 2004***Pessac (Graves), cru classé**In original wooden case*1006 3 magnums *per lot \$600-850*



PAPE-CLEMENT

As we wrapped up cellar work on day three our thoughts naturally turned to what selections from the cellar should be pulled for the evening's dinner. Herr von Staff and his wife graciously prepared a properly hearty German meal, leg of lamb, greens and potatoes. From the cellar we brought up two bottles each of 1964 Pape Clement, 1989 Beaucastel, 1993 Gevrey-Chambertin (Madame Pierre Gelin). The featured wine of the night, the '64.

Tasting note from this cellar: This late release bottling by the Château underwent reconditioning in 1993. I quite agree with the end result as the wine has not lost any of its maturity and integration. There is no impression younger wine used in the reconditioning which leads me to believe that other 1964 bottles were used as would be the tradition. The wine itself is fully integrated, mature, with soft tannins.

The aromas are savory, complex and autumnal as appropriate for this age. The palate is graceful, one commented it was rather elegant (von Staff). We already had an impression that Herr von Staff was partisan towards the Pape Clement, our confirmation came from watching his wife's favorable reaction to this sublime wine. Clearly a style of maturity enjoyed very much in this household. Remaining wines were polished off with a selection of wonderful cheeses and joyful conversation well into the evening hours. – Scott Torrence 10/1/15 at the home of Herr & Fr von Staff.

Château Pape-Clément 1964

Pessac (Graves), cru classé

All levels: bottom neck or better; wrinkled and lightly bin soiled labels, all rebouché en 1993

All lots in original wooden cases

Parcel: 1007-1008, 1009-1016

1007	6 magnums	per lot \$1,000-1,500
1008	6 magnums	per lot \$1,000-1,500
1009	12 bottles	per lot \$1,000-1,500
1010	12 „	
1011	12 „	
1012	12 „	
1013	12 „	
1014	12 „	
1015	12 „	
1016	12 „	

Château Pape-Clément 1999

Pessac (Graves), cru classé

1017	12 bottles	per lot \$800-1,000
------	------------	---------------------

Château Pape-Clément 2001

Pessac (Graves), cru classé

All lots in original wooden cases

Parcel: lots 1019-1020

1018	6 magnums	per lot \$1,100-1,600
1019	12 bottles	per lot \$1,100-1,600
1020	12 „	

Château Pape-Clément 2005

Pessac (Graves), cru classé

Lots 1021-1022, 1024-1025 in original wooden cases

Parcel: lots 1021-1022, 1024-1025

1021	1 nebuchadnezzar (15L)	per lot \$2,000-3,000
1022	1 „	per lot \$2,000-3,000

Château Pape-Clément 2005

Pessac (Graves), cru classé

1023	3 double-magnums	per lot \$1,300-1,800
------	------------------	-----------------------

Château Pape-Clément 2005

Pessac (Graves), cru classé

1024	6 magnums	per lot \$1,300-1,800
1025	6 „	





GRAND BORDEAUX
CHATEAU
PAPE CLÉMENT
GRAND CRU CLASSÉ DE GRAVES
2005

Bernard Magrez

CHATEAU
PAPE CLEMENT

PÉTRUS



Noah May, *Specialist*

Pétrus 1947

To this day, the 1947 Vandermeulen Petrus is one of the great wines that I have tasted. The vintage is famous for huge wines that have the power to stand the test of time, and this Petrus is no exception. A Parker 100 point wine, that's noted for its textured opulence, sweet, rich fruit, and extravagant perfume. An example from a cellar as fine as this has the potential to soar.

Pétrus 1947

Pomerol, cru exceptionnel

Levels: four top shoulder, one upper shoulder, three mid shoulder, one mid shoulder; four lightly corroded capsules, one signs of old seepage, bin soiled labels, two torn labels, Vandermeulen Belgian-bottled

1026 9 bottles per lot \$18,000-27,000

Pétrus 1948

Pomerol, cru exceptionnel

Level: mid upper shoulder; corroded capsule, bin soiled label

1027 1 bottle per lot \$1,500-2,000

Pétrus 1950

Pomerol, cru exceptionnel

Levels: two mid upper shoulder, three mid shoulder, one mid low shoulder, corroded capsules, one torn and partially missing capsule, bin soiled and torn label

1028 6 bottles per lot \$12,000-18,000

Pétrus 1950

Pomerol, cru exceptionnel

Level: mid upper shoulder; Château capsule, brown glass bottle, heavily bin soiled label

1029 1 bottles per lot \$1,000-1,500

Pétrus 1952

Pomerol, cru exceptionnel

Lot 1030 levels: one top shoulder, two upper shoulder; lightly corroded capsules, very badly bin soiled and torn labels, one partially missing at corner

Lot 1031 level: mid shoulder; lightly corroded capsule, nicked and bin soiled label

1030 3 magnums per lot \$12,000-18,000

1031 1 bottles per lot \$2,000-3,000

VERY RARE 1953 VINTAGE

Pétrus 1953

Pomerol, cru exceptionnel

Levels: two upper shoulder, one mid shoulder, corroded and lightly torn capsules, one Nicolas stamped label with the back label, one bin soiled, one heavily bin soiled and torn label

1032 3 magnum per lot \$15,000–20,000

Pétrus 1953

Pomerol, cru exceptionnel

Lot 1033: two different capsule colors, Château capsule with mid upper shoulder level, lightly corroded capsule, bin soiled label, vintage in black typeface, blue grape motif capsule with mid shoulder level, badly torn and partially missing label, bin soiled label, vintage visible in red typeface

Lot 1034 levels: one into neck, one upper shoulder; two different capsules, one bin soiled label

1033 2 bottles per lot \$3,200–4,800

1034 2 half bottles per lot \$1,600–2,400

Pétrus 1955

Pomerol, cru exceptionnel

Lot 1035 levels: one top shoulder; one upper shoulder, one mid upper shoulder; one lightly torn label, two torn and partially missing labels, bin soiled labels

Lot 1036 level: bottom neck; corroded capsule, bin soiled label

1035 3 magnums per lot \$10,000–15,000

1036 1 bottles per lot \$1,700–2,600

Pétrus Believed 1958

Pomerol, cru exceptionnel

Level: top shoulder, lightly corroded capsules, one remains of label, vintage not visible, one with no label hand written label, both with Château capsules

1037 2 bottles per lot \$4,000–5,500



Edwin Vos, Head of Continental Europe

Pétrus 1960

A Château bottled half bottle with into neck level. Label missing, capsule and cork fully branded. Deep brick red with orange rim. At first still closed and not showing much, after some air nicely opening up. Fresh dark fruit aromas, smoky bacon, and leather. A complex nose of great promise. After half an hour fully open and full of live. Surprising lively appearance of great joy

Pétrus 1960

Pomerol, cru exceptionnel

Level: six bottom neck, one top shoulder, bin soiled and lightly faded labels

1038 7 bottles per lot \$14,000–20,000



Pétrus 1963

Pomerol, cru exceptionnel

Level: mid shoulder; corroded capsule, torn label

1039 1 bottle per lot \$1,500–2,000

Pétrus 1966

Pomerol, cru exceptionnel

Level: bottom neck; slightly depressed capsule, lightly corroded at top, lightly wrinkled and bin soiled label

1040 1 bottle per lot \$1,800–2,800

Pétrus 1969

Pomerol, cru exceptionnel

Level: bottom neck; lightly bin soiled label

1041 1 bottle per lot \$1,200–1,700

Pétrus 1970

Pomerol, cru exceptionnel

Level: top shoulder; lightly corroded capsule, bin soiled label

1042 1 bottle per lot \$1,500–2,400

Pétrus 1974

Pomerol, cru exceptionnel

Lot 1043 level: upper shoulder; crowned capsule

Lot 1044 level: bottom neck; lightly corroded capsule, bin soiled, torn and partially missing label

1043 1 magnum per lot \$1,800–2,600

1044 1 bottles per lot \$900–1,300

Pétrus 1975

Pomerol, cru exceptionnel

Levels: three top shoulder, one upper shoulder, two mid shoulder; one crowned capsule, lightly bin soiled labels, one torn label

1045 6 bottles per lot \$9,500–13,000

Pétrus 1976

Pomerol, cru exceptionnel

Lot 1046 levels: one top shoulder, one upper shoulder; lightly torn labels

Lot 1047 levels: six bottom neck or better, one top shoulder

1046 2 magnums per lot \$4,000–6,000

1047 7 bottles per lot \$7,000–11,000

Pétrus 1977

Pomerol, cru exceptionnel

Lot 1048 levels: into neck

Lot 1049 levels: one upper shoulder, one mid shoulder; corroded capsules at tops, badly torn labels, one partially missing

1048 3 magnums per lot \$4,800–6,000

1049 2 bottles per lot \$1,600–2,400



MIS EN BOUTEILLE
AU CHATEAU

1986
PETRVS
POMEROL

Grand Vin

Mme L. P. LACOSTE
PROPRIÉTAIRE & F

MIS EN BOUTEILLES

APPELLATION



MIS EN BOUTEILLE
AU CHATEAU

1987
PETRVS
POMEROL

Grand Vin

Mme L. P. LACOSTE
PROPRIÉTAIRE & F

MIS EN BOUTEILLES

APPELLATION





Pétrus 1979

Pomerol, cru exceptionnel

Lot 1050 levels: six bottom neck, five top shoulder, one upper shoulder; lightly oxidized capsules, two torn capsules, one corroded capsule, mixed importers

Lot 1051 levels: bottom neck or better; one torn and partially missing label, bin soiled and damp stained labels

1050	12 bottles	per lot \$10,000-15,000
1051	2 ,,	per lot \$1,600-2,400

Pétrus 1980

Pomerol, cru exceptionnel

Level: upper shoulder; lightly corroded capsule, bin soiled label

1052	1 bottle	per lot \$900-1,300
------	----------	---------------------

Pétrus 1981

Pomerol, cru exceptionnel

Lot 1053 level: into neck; lightly bin soiled label

Lot 1054 levels: eleven bottom neck, one top shoulder; lightly corroded capsules, four torn capsules, nicked labels, in original wooden case missing lid

1053	1 magnum	per lot \$2,400-4,000
1054	12 bottles	per lot \$15,000-24,000

Pétrus 1982

Pomerol, cru exceptionnel

Levels: into neck; lightly oxidized capsules, two nicked capsules, lightly torn labels at edges

1055	8 bottles	per lot \$20,000-30,000
------	-----------	-------------------------

Pétrus 1983

Pomerol, cru exceptionnel

Lot 1056 level: into neck; lightly bin soiled and scuffed label

Lot 1057 levels: into neck

1056	1 double magnum	per lot \$4,000-6,000
1057	2 bottles	per lot \$2,000-3,000

Pétrus 1984

Pomerol, cru exceptionnel

Level: into neck; nicked capsule, bin soiled and damp stained label

1058	1 bottle	per lot \$900-1,300
------	----------	---------------------

Pétrus 1985

Pomerol, cru exceptionnel

Level: upper shoulder; lightly corroded and nicked capsule, slight signs of old seepage

1059	1 imperial	per lot \$10,000-15,000
------	------------	-------------------------

Pétrus 1986

Pomerol, cru exceptionnel

Lot 1060 level: into neck; signs of old seepage, crowned capsule

In original wooden case

Lot 1061 levels: bottom neck or better; one nicked label, one lightly bin soiled label, mixed importers

1060	1 imperial	per lot \$9,000-12,000
1061	12 bottles	per lot \$13,000-19,000

Pétrus 1987

Pomerol, cru exceptionnel

Level: into neck; lightly torn capsule, lightly bin soiled label

In original wooden case

1062	1 imperial	per lot \$8,000-10,000
------	------------	------------------------

Pétrus 1988

Pomerol, cru exceptionnel

All levels: into neck; lightly bin soiled label

1063	1 double magnum	per lot \$5,000-7,000
1064	1 jeroboam	per lot \$6,000-9,000

Pétrus 1989

Pomerol, cru exceptionnel

Levels: into neck

1065	6 bottles	per lot \$14,000-19,000
------	-----------	-------------------------

Pétrus 1990

Pomerol, cru exceptionnel

Lot 1066 levels: into neck

Lot 1067 levels: into neck; three torn capsules, nicked capsules

In original wooden case

Lot 1068 levels: bottom neck; four scuffed capsule at top, two torn capsules at top with cork exposed, two lightly torn labels at edge, one bin soiled label

1066	3 double magnums	per lot \$32,000-50,000
1067	12 bottles	per lot \$32,000-50,000
1068	11 ,,	per lot \$28,000-45,000

Pétrus 1993

Pomerol, cru exceptionnel

Level: into neck

1069	1 bottles	per lot \$800-1,200
------	-----------	---------------------

1070-1071 No Lots



CHATEAU LAFLEUR

A POMEROL
GRELOUD ROBIN GUINAUDEAU

CHATEAU LAFLEUR

A POMEROL
GRELOUD ROBIN GUINAUDEAU

6 x 75 cl

1993

6 x 75 cl

CHATEAU LAFLEUR

A POMEROL
GRELOUD ROBIN GUINAUDEAU

6 x 75 cl

CHATEAU LAFLEUR

A POMEROL
GRELOUD ROBIN GUINAUDEAU

6 x 75 cl

CHATEAU LAFLEUR

A POMEROL
GRELOUD ROBIN GUINAUDEAU

CHATEAU LAFLEUR

A POMEROL
GRELOUD ROBIN GUINAUDEAU

EAU

A POMEROL
GRELOUD ROBIN GUINAUDEAU

CHATEAU LAFLEUR

A POMEROL
GRELOUD ROBIN GUINAUDEAU

1993

CHATEAU LAFLEUR

A POMEROL
GRELOUD ROBIN GUINAUDEAU

1996

CHATEAU LAFLEUR

A POMEROL
GRELOUD ROBIN GUINAUDEAU

Lots 1072-1107



LAFLEUR

Château Lafleur is almost a misnomer, for there really is no château. It is the simplest of estates, with not even a sign at the entrance. Instead a gravel driveway between the vines leads to a modest home amongst the mere 4.5ha of vines in one single square plot, adjoining the road leading to Pétrus a short distance away. The Lafleur vineyards sit on the crest of the hill with some illustrious neighbors, Le Pin, Pétrus and a little further Vieux Château and in the near distance the vineyards of Château Cheval Blanc.

What distinguishes this property then from its neighbors, is the family-run nature of the business; Sylvie and Jacques Guinaudeau have since 1985 managed (and now own) this beautiful property. Jacques's family has been at Lafleur since the estate's origin in 1872. It is amongst, all the corporate ownership in Bordeaux, a family winery, where each vine is tended by hand and according to its individual requirements. Even on such a small plot, different soils demand different decisions of the viticulturist and this wine is made in the vineyard. The family continue to respect the cépages left by the previous owners, the Robin sisters, in some cases the Merlot and Cabernet Franc are interspersed in the vineyard, making individual vine treatment labor intensive yet necessary to produce the very best.

The passion and dedication of the Guinaudeau family extends to the winemaking when the goal is to produce a light extraction that is mindful of the terroir and the vintage.

Château Lafleur 1967

Pomerol

Levels: top shoulder; corroded capsules, one damaged, one capsule cut to reveal fully branded cork, lightly bin soiled and glue striped labels

1072 2 magnums per lot \$1,200-1,600

Château Lafleur 1975

Pomerol

Level: top shoulder; bin soiled and lightly tom label

1073 1 bottle per lot \$2,000-3,000

Château Lafleur 1979

Pomerol

Levels: bottom neck; lightly bin soiled and glue striped labels

1074 11 bottles per lot \$13,000-18,000

Château Lafleur 1984

Pomerol

Levels: bottom neck; lightly bin soiled labels

1075 9 bottles per lot \$5,500-7,000

Château Lafleur 1988

Pomerol

Levels: bottom neck; glue stained labels

1076 5 bottles per lot \$2,000-3,000

Château Lafleur 1993

Pomerol

Lots 1077- 1086: levels into neck; wrinkled labels

Lots 1077 - 1083 in original wooden cases

Parcel: lots 1077- 1082

1077 1 jeroboam per lot \$1,100-1,700

1078 1 jeroboam-bordeaux per lot \$1,100-1,700

1079 1 ,,

1080 1 ,,

1081 1 ,,

1082 1 ,,

1083 3 double magnum per lot \$2,200-3,000

1084 1 ,, per lot \$750-950

1085 12 bottles per lot \$2,000-3,500

1086 6 ,, per lot \$900-1,500

Château Lafleur 1994

Pomerol

Lots 1087- 1090: levels bottom neck, lightly bin soiled labels

Lots 1087 - 1088 in individual original wooden cases

Lots 1089 - 1090 in two six-bottle original wooden cases

Parcel: lots 1089 - 1090

1087 1 imperial per lot \$1,800-2,400

1088 1 ,,

1089 12 bottles per lot \$2,800-3,800

1090 12 ,,

Château Lafleur 1995

Pomerol

Lots 1091- 1092 levels: bottom neck

Lots 1091- 1092 in two six-bottle original wooden cases

Parcel: lots 1091 - 1092

1091 12 bottles per lot \$3,500-5,500

1092 12 ,,

Château Lafleur 1996

Pomerol

Lots 1093-1094 in two six-bottle original wooden cases

Parcel: lots 1093-1094

1093 12 bottles per lot \$3,000-5,000

1094 12 ,,

Château Lafleur 1997

Pomerol

Lots 1095-1096 in two six-bottle original wooden cases

Parcel: lots 1095-1096

1095 12 bottles per lot \$1,800-2,400

1096 12 ,,



Château Lafleur 1998

Pomerol

Lot 1097 in two three-magnum original wooden cases

Lots 1098-1099 in two six-bottle original wooden cases

Parcel: lots 1098-1099

1097	6 magnums	per lot \$3,800-5,500
1098	12 bottles	per lot \$3,800-5,500
1099	12 ,,	per lot \$3,800-5,500

Château Lafleur 1999

Pomerol

Lots 1100-1101 in two six-bottle original wooden cases

Parcel: lots 1100-1101

1100	12 bottles	per lot \$2,800-3,800
1101	12 ,,	

Château Lafleur 2000

Pomerol

Lots 1103-1104 in two six-bottle original wooden cases

Parcel: lots 1103-1104

1102	10 bottles	per lot \$10,000-15,000
1103	12 bottles	per lot \$12,000-18,000
1104	12 ,,	

Château Lafleur 2001

Pomerol

Lots 1105-1106 in two six-bottle original wooden cases

Parcel: lots 1105-1106

1105	12 bottles	per lot \$3,800-5,500
1106	12 ,,	

Château Lafleur 2003

Pomerol

In two six-bottle original wooden cases

1107	12 bottles	per lot \$3,800-5,500
------	------------	-----------------------

LE PIN

This winery was acquired by the current owner in 1979 and have always been thought of as the original right bank "garagiste" winery. Named after the solitary pine tree on the estate, the dual combination of extreme fame and minuscule production, typically 600-700 cases per vintage has meant difficult supply at any price. It is made from 100% Merlot over five acres under the watchful eye of Jacques Thienpont, who now has access to a recently completed state of the art winery.

Le Pin 1995

Pomerol

Levels: into neck

1108	5 bottles	per lot \$7,500-10,000
------	-----------	------------------------

Le Pin 1996

Pomerol

1109	3 bottles	per lot \$3,800-5,500
------	-----------	-----------------------

Le Pin 1998

Pomerol

In original wooden case

1110	6 bottles	per lot \$13,000-17,000
------	-----------	-------------------------

Le Pin 1999

Pomerol

In original wooden case

1111	12 half bottles	per lot \$7,000-10,000
------	-----------------	------------------------

Le Pin 2000

Pomerol

In two six-bottle original wooden cases

1112	12 bottles	per lot \$32,000-45,000
------	------------	-------------------------

Le Pin 2001

Pomerol

In two six-bottle original wooden cases

1113 12 bottles *per lot* \$19,000-28,000

Le Pin 2004

Pomerol

Lot 1114 in four three-bottle original wooden cases

Lot 1115 in one three-bottle original wooden case

1114 12 bottles *per lot* \$14,000-19,000

1115 5 bottles *per lot* \$5,500-7,500

Le Pin 2007

Pomerol

Lot 1116 in two three-magnum original wooden cases

Lot 1117 in one three-magnum original wooden case

1116 6 magnums *per lot* \$14,000-19,000

1117 3 magnum *per lot* \$7,000-9,000

Le Pin 2010

Pomerol

In individual original wooden cases

1118 3 magnums *per lot* \$12,000-18,000





Le Pin

POMEROL

APPELLATION POMEROL CONTRÔLÉE

2000

Hugot

MIS EN BOUTEILLE AU CHATEAU

S.E.A. DU CHATEAU DU PIN - PROPRIÉTAIRE À POMEROL - GIRONDE - FRANCE

L. P01



Le Pin
POMEROL
2010
1MAG

Le Pin
POMEROL
2010
1MAG

**Château L'Eglise-Clinet 1986***Pomerol**Levels: five into neck, six bottom neck, one top shoulder; lightly bin soiled labels**In original wooden case*1119 12 bottles *per lot \$900-1,300***Château L'Eglise-Clinet 1996***Pomerol**Lots 1120-1121 in original wooden cases**Parcel: lots 1120-1121*1120 12 bottles *per lot \$1,200-1,600*

1121 12 ,,

Château L'Eglise-Clinet 1998*Pomerol**Lightly wrinkled label**In original wooden case*1122 1 imperial *per lot \$1,400-1,800***Château L'Eglise-Clinet 1999***Pomerol**In original wooden case*1123 6 magnums *per lot \$1,000-1,500***Château L'Eglise-Clinet 2000***Pomerol**Lot 1127 lightly bin soiled labels**Lots 1124-1125 in original wooden cases**Parcel: lots 1124-1126*1124 12 bottles *per lot \$2,400-3,200*

1125 12 ,,

1126 12 ,,

1127 12 ,,

Château L'Eglise-Clinet 2001*Pomerol**Lots 1128-1134 in original wooden cases**Parcel: lots 1128-1129, 1130-1134*1128 6 magnums *per lot \$1,700-2,400*1129 6 magnums *per lot \$1,700-2,400*1130 12 bottles *per lot \$1,700-2,400*

1131 12 ,,

1132 12 ,,

1133 12 ,,

1134 12 ,,

Château L'Eglise-Clinet 2002*Pomerol**Lots 1135-1140 in original wooden cases**Lots 1141 bin soiled labels, in original wooden case missing lid**Parcel: lots 1135-1140*

1135 12 bottles

1136 12 ,,

1137 12 ,,

1138 12 ,,

1139 12 ,,

1140 12 ,,

1141 12 ,,

Château Clinet 1998*Pomerol**Lots 1142- 1143 in original wooden cases, lot 1143 with missing lid**Parcel: lots 1142-1143*1142 12 bottles *per lot \$800-1,000*

1143 12 ,,

Château Clinet 2000*Pomerol**Lot 1144 six bottles in original wooden case**Lot 1145 in original wooden case*1144 12 bottles *per lot \$1,000-1,500*

1145 12 ,,

Château Clinet 2001*Pomerol**Lots 1146-1147 in original wooden cases*1146 3 magnums *per lot \$400-500*1147 12 bottles *per lot \$800-1,000***Château La Conseillante 1989***Pomerol**Lot 1148 levels: into neck; slightly oxidized capsules, four damaged, in two three-magnum original wooden cases**Lots 1149-1150 levels: into neck; slightly oxidized capsules, in original wooden cases**Parcel: lots 1149-1150*1148 6 magnums *per lot \$2,600-3,500*1149 12 bottles *per lot \$2,600-3,500*

1150 12 ,,

Château La Conseillante 1993*Pomerol*1151 12 bottles *per lot \$550-750***Château La Fleur-Pétrus 1999***Pomerol**Lots 1152-1153 in original wooden cases*1152 3 double magnums *per lot \$1,300-1,800*1153 12 bottles *per lot \$1,300-1,800*

CHATEAU
L'ÉGLISE-CLINET
2000
POMEROL
APPELLATION POMEROL CONTRÔLÉE
DENIS DURANTOU
MIS EN BOUTEILLE AU CHATEAU
E.A.R.L. CHATEAU L'ÉGLISE CLINET
EXPLOITANT A POMEROL GIRONDE - FRANCE

CHATEAU
L'ÉGLISE-CLINET
2000
POMEROL
APPELLATION POMEROL CONTRÔLÉE
DENIS DURANTOU
MIS EN BOUTEILLE AU CHATEAU
E.A.R.L. CHATEAU L'ÉGLISE CLINET
EXPLOITANT A POMEROL GIRONDE - FRANCE
75cl PRODUIT DE FRANCE 13.5% vol.

CHATEAU
L'ÉGLISE-CLINET
2000
POMEROL
APPELLATION POMEROL CONTRÔLÉE
DENIS DURANTOU
MIS EN BOUTEILLE AU CHATEAU
E.A.R.L. CHATEAU L'ÉGLISE CLINET
EXPLOITANT A POMEROL GIRONDE - FRANCE
75cl PRODUIT DE FRANCE

ST. EMILION

The early vigneron of this region learned which grape varieties best fit their major soil compositions. Producers here use the same suite of red grapes as the Médoc but in different proportions. Mineral composition, texture and structure of the plateau terroir vary considerably to those found along the river.

The two top châteaux are in a class unto themselves, Cheval Blanc and Ausone have long reigned supreme due to superior, yet quite different terroir. Ausone's vineyards start on the plateau and slope down towards the valley, its soils a mixture of limestone and clay. It remains one of the smallest of all the top line estates in Bordeaux. Sun exposure and moisture drainage here are advantageous under less than ideal weather conditions as a consequence the ratio of Merlot and Cabernet Franc is closer to 50/50. Cheval Blanc is on the plateau terrace close to Pomerol's finest vineyards, however as the soils contain more sand in their clay so Cabernet Franc dominates the planting ratio by two-thirds to that of Merlot.

Pavie is by far the largest of the next tier estates. Its production can reach six times that of Ausone. While its history dates back to the mid-19th century its modern inception dates to the 1957 death of Parisian wine merchant and owner, Alexandre Valette. Troplong-Mondot passed on to one branch of the family, now run by his great-granddaughter Christine Valette, and Pavie passed to the other branch, run by his grandson Jean-Paul. Since 1998 Pavie is owned by Gérard Perse (owner of Monbousquet, Pavie-Decesse, Bellevue-Mondotte) who has taken Pavie to new critical heights, a rebirth of an ancient estate through a sheer drive, spare-no-expense and state-of-the-art investment attitude. With the purchase in 2002 of Château La Clusiere its 2.5 ha of vines have been incorporated into the production of Pavie. This allowance by France's regulatory authorities was granted due to the similarity of terroir. Further allowances were given to the reintegration of lands under Pavie-Decesse's control which helped to enlarge Pavie to its current 42 hectare size. Its vineyards are planted to 70% Merlot, 20% Franc and 10% Sauvignon.

Not far from Pavie and Troplong-Mondot, south-east of the town center of St. Emilion, lying on the same slope extension is Le Tertre-Rôteboeuf. Planted almost entirely to Merlot and 20 percent Franc this pocket-sized estate produces around 2000 cases per year. The vines here average around 40+ years, with the Cabernet Franc vines closer to 50+ years old. The harvesting protocol here calls for late harvesting, allowing for the longest possible hang time to reach optimal field ripeness. The wine of Tertre Rôteboeuf is rich, racy and plush; crushed raspberry and mineral perfume, along with black cherry, licorice and elements of kirsch are its hallmarks. However, it does not seem to make old bones. The wine might be best between 12 and 22 years of age, depending on the vintage.



Château Cheval-Blanc 1947

Saint-Emilion, 1er grand cru classé
Level: upper shoulder; capsule cut previously, part missing, bin soiled label. Bottled by Vandermeulen

1154 1 bottle per lot \$3,000-5,000

Château Cheval-Blanc 1982

Saint-Emilion, 1er grand cru classé
Level: into neck; lightly torn label

1155 1 double magnum per lot \$2,400-3,000

Château Cheval-Blanc 1986

Saint-Emilion, 1er grand cru classé
Levels: into neck; one corroded capsule, one very slightly stained label, one nicked label
In original wooden case

1156 6 magnums per lot \$3,200-5,000

Château Cheval-Blanc 1993

Saint-Emilion, 1er grand cru classé
Lot 1157 three slightly bin soiled labels
Lots 1157-1158 in original wooden cases

1157 12 bottles per lot \$2,400-3,500

1158 12 ,,

Château Cheval-Blanc 1996

Saint-Emilion, 1er grand cru classé
In original wooden case

1159 12 bottles per lot \$3,000-5,000

Château Cheval-Blanc 1999

Saint-Emilion, 1er grand cru classé(A)
In original wooden case

1160 12 bottles per lot \$3,000-5,000

Château Cheval-Blanc 2000

Saint-Emilion, 1er grand cru classé (A)
In two six-bottle original wooden cases, one with missing lid

1161 12 bottles per lot \$6,000-9,000

Château Cheval-Blanc 2001

Saint-Emilion, 1er grand cru classé (A)
Lot 1162 in two six bottle original wooden cases
Lot 1163 in original wooden case
Parcel: lots 1162-1163

1162 12 bottles per lot \$3,000-5,000

1163 12 bottles per lot \$3,000-5,000

Château Cheval-Blanc 2003

Saint-Emilion, 1er grand cru classé (A)
In original wooden case

1164 12 bottles per lot \$3,200-5,000



**Château Cheval-Blanc 2005**

*Saint-Emilion, 1er grand cru classé (A)
In original wooden case*

1165 1 nebuchadnezzar (15L) per lot \$8,000-12,000

Château Ausone 1956

*Saint-Emilion, 1er grand cru classé
Levels: one upper shoulder, two mid shoulder; slightly corroded
capsules, one depressed cork, bin soiled labels, two nicked labels*

1166 3 bottles per lot \$600-900

Château Ausone 1997

*Saint-Emilion, 1er grand cru classé
In original wooden case*

1167 12 bottles per lot \$3,000-5,000

Château Ausone 1998

*Saint-Emilion, 1er grand cru classé
In original wooden case*

1168 12 bottles per lot \$4,000-6,000

Château Ausone 1999

*Saint-Emilion, 1er grand cru classé
Lots 1169-1171 in original wooden cases
Parcel: lots 1169-1171*

1169 12 bottles per lot \$3,500-5,000

1170 12 ,,

1171 12 ,,

Château Ausone 2000

*Saint-Emilion, 1er grand cru classé
In original wooden case*

1172 12 bottles per lot \$8,500-11,000

Château Ausone 2002

*Saint-Emilion, 1er grand cru classé
In original wooden case*

1173 12 bottles per lot \$3,500-5,500

Château Angelus 1996

*Saint-Emilion, grand cru classé
Both lots in original wooden case
Parcel: lots 1174-1175*

1174 12 bottles per lot \$2,200-3,200

1175 12 ,,

Château Angelus 1997

*Saint-Emilion, grand cru classé
Lots 1176-1178 six bottle original wooden cases
Parcel: lots 1176-1178*

1176 12 bottles per lot \$1,800-2,400

1177 12 ,,

1178 12 ,,

Château Angelus 1998

*Saint-Emilion, grand cru classé
Lots 1179-1181 in original wooden cases
Parcel: lots 1179-1181*

1179 12 bottles per lot \$2,400-3,500

1180 12 ,,

1181 12 ,,

1182 12 ,,

Château Angelus 2000

*Saint-Emilion, grand cru classé
Parcel: lots 1183-1184*

1183 12 bottles per lot \$3,000-4,500

1184 12 ,,

Château Angelus 2001

*Saint-Emilion, grand cru classé
In original wooden case*

1185 12 bottles per lot \$2,000-3,000

Château Angelus 2003

*Saint-Emilion, grand cru classé
In original wooden case*

1186 12 bottles per lot \$2,000-3,000

Château Angelus 2004

*Saint-Emilion, grand cru classé
Lots 1187-1189 in original wooden cases
Parcel: lots 1187-1189*

1187 12 bottles per lot \$2,000-3,000

1188 12 ,,

1189 12 ,,



PAVIE

Château Pavie 1998

*Saint-Emilion, 1er grand cru classé
In original wooden case*

1190 12 bottles *per lot \$1,800-2,400*

Château Pavie 1999

*Saint-Emilion, 1er grand cru classé
Lots 1191-1192 in original wooden cases
Parcel: lots 1191-1192*

1191 6 magnums *per lot \$2,000-3,000*

1192 6 magnums *per lot \$2,000-3,000*

Château Pavie 2001

*Saint-Emilion, 1er grand cru classé
In two individual original wooden cases*

1193 2 double magnums *per lot \$1,200-1,800*

Château Pavie 2003

*Saint-Emilion, 1er grand cru classé
In original wooden case*

1194 3 double magnums *per lot \$2,200-3,200*

Château Pavie 2005

*Saint-Emilion, 1er grand cru classé
Lots 1195-1199 in original wooden cases
Parcel: lots 1195-1199*

1195 12 bottles *per lot \$2,400-3,200*

1196 12 „

1197 12 „

1198 12 „

1199 12 „





LA MONDOTTE

Count Stephan von Neipperg intended to merge La Mondotte with his grand cru classé Château Canon-La-Gaffelière when he purchased the Château in the early 1990s. When permission was denied, the count vowed to create a wine that would rival the very best of Saint-Emilion. In an appellation that is fertile ground for garagiste winemaking, Count von Neipperg spared no expenses on creating this luscious wine.

The hedonistic, super ripe juice is created with careful attention. Yields are restricted to 30 hl/ha - similar to right-bank cohort Pétrus and the wine undergoes malo in barrel before 12-18 months new oak maturation. Some would describe the intense, inky wine as almost port-like in some vintages, likening it more perhaps to a Screaming Eagle of Bordeaux than common comparisons to Le Pin or Pétrus. In fact, the intense Merlot is matched by some about 25 percent Cabernet Franc grown on the steep vineyard slopes. The approximately ten hectare parcel of land is located east of the limestone plateau famous in St.-Émilion. The clay and silt topsoils cover a rocky subsoil that provides excellent drainage and forces the vines' roots to dig deeply in search of water and minerals. The wine has been met with accolades by many critics, particularly by Robert Parker since Neipperg's first successful vintage in 1996.

Château La Mondotte 1998

Saint-Emilion, grand cru classé

Lots 1200-1201 in two six-bottle original wooden cases

Lot 1202 in original wooden case

Parcel: lots 1200-1201

1200 12 bottles *per lot \$2,000-3,000*

1201 12 „

1202 6 „ *per lot \$1,000-1,500*

Château La Mondotte 1999

Saint-Emilion, grand cru classé

In original wooden case

1203 12 bottles *per lot \$1,500-2,000*

Château La Mondotte 2000

Saint-Emilion, grand cru classé

In original wooden case

1204 6 bottles *per lot \$1,200-1,800*

Château La Mondotte 2001

Saint-Emilion, grand cru classé

In original wooden case

1205 12 bottles *per lot \$1,500-2,000*

Château La Mondotte 2002

Saint-Emilion, grand cru classé

Lots 1206-1208 in two original six-bottle wooden cases

Parcel: lots 1206-1208

1206 12 bottles *per lot \$1,300-1,800*

1207 12 „

1208 12 „

Château La Mondotte 2003

Saint-Emilion, grand cru classé

In original wooden case

1209 12 bottles *per lot \$1,800-2,400*

Château La Mondotte 2009

Saint-Emilion, grand cru classé

Lots 1210-1211 in individual original wooden cases

Parcel: lots 1210-1211

1210 6 magnums *per lot \$3,000-5,000*

1211 6 magnums *per lot \$3,000-5,000*

Château Troplong-Mondot 1992

Saint-Emilion, grand cru classé

Levels: into neck; two damaged capsules

In original wooden case

1212 12 bottles *per lot \$450-650*

Château Troplong-Mondot 1994

Saint-Emilion, grand cru classé

Levels: bottom neck

In original wooden case

1213 12 bottles *per lot \$450-650*

Château Troplong-Mondot 2000

Saint-Emilion, grand cru classé

1214 12 bottles *per lot \$1,000-1,500*

Château Troplong-Mondot 2005

Saint-Emilion, grand cru classé

Lots 1215-1220 in original wooden cases

Parcel: lots 1216-1220

1215 6 magnums *per lot \$1,800-2,400*

1216 12 bottles *per lot \$1,800-2,400*

1217 12 „

1218 12 „

1219 12 „

1220 12 „



VALANDRAUD

In 1991, Jean-Luc Thunevin purchased his first vineyard in St.-Émilion. While the vines of the estate were of suitable age, 30-40 years old, the property itself was not highly thought of in historical rankings. Yet, through sheer will power or skill, depending on your view point, Jean-Luc has brought Château de Valandraud on to the world stage as a wine to be reckoned with...and a price to match! Round about the mid-1990s Virginie de Valandraud, named after Jean-Luc and his wife Murielle daughter, was initially designed as a second label to Valandraud. Since 1997, a second label it is no longer. The wine is made from selected lots and vinified in the same way as Château de Valandraud.

Invariably, Bordeaux wine lovers attempt red wine comparisons of all kinds. It is through the prism of harmony and discord that we gain understanding in a given topic. To understand the totality and diversity of Bordeaux we begin with the appreciation of the various varieties of grapes planted. Hundreds of years of trials and tradition have settled upon five red and three white grape varieties. Merlot and the two Cabernets dominate the landscape, accounting for upwards of 90 percent of planted vineyard area. To understand why we look to the role of soil as it relates to a specific variety's success or not. The left bank of the Gironde River contains more pebbly soils and rocky mounds, here in the Médoc Cabernet Sauvignon reigns supreme. In Pomerol, Merlot dominates nearly all vineyards as this varietal takes well to the predominant clay based soils on this plateau, in Saint Emilion, Cabernet Franc is favored for its early ripening capabilities which hedge against cooler morning frosts as these vineyard lie high above the moderating effects of the river below. The ratios planted of each help to establish the balance in style thought best to represent a given estate's land.

Château Valandraud 1993

Saint-Emilion, grand cru classé

Levels: into neck; one slightly damaged label

In two six-bottle original wooden cases

1221 12 bottles *per lot \$1,500-2,000*

Château Valandraud 1997

Saint-Emilion, grand cru classé

In original wooden case

1222 6 magnums *per lot \$1,500-2,000*

Château Valandraud 1998

Saint-Emilion, grand cru classé

Lots 1223-1225 in two six-bottle original wooden cases

Parcel: lots 1223-1225

1223 12 bottles *per lot \$1,500-2,000*

1224 12 „

1225 12 „

Château Valandraud 2000

Saint-Emilion, grand cru classé

Lots 1226-1228 in original wooden cases

Parcel: lots 1226-1227

1226 1 imperial *per lot \$800-1,500*

1227 1 „

1228 12 bottles *per lot \$1,400-1,800*

Château Valandraud 2001

Saint-Emilion, grand cru classé

In original wooden case

1229 12 bottles *per lot \$1,000-1,500*

Château Valandraud 2003

Saint-Emilion, grand cru classé

In original wooden case

1230 12 bottles *per lot \$1,200-1,800*

Château Figeac 2000

Saint-Emilion, 1er grand cru classé

Lots 1231-1234 in original wooden cases

Parcel: lots 1231-1234

1231 12 bottles *per lot \$1,400-2,000*

1232 12 „

1233 12 „

1234 12 „

Château Le Tertre-Roteboeuf 1995

Saint-Emilion, grand cru classé

In original wooden case

1235 12 bottles *per lot \$1,000-1,500*

Château Le Tertre-Roteboeuf 1998

Saint-Emilion, grand cru classé

In original wooden case

1236 3 double magnum *per lot \$1,500-2,000*

Château Le Tertre-Roteboeuf 1999

Saint-Emilion, grand cru classé

In two six-bottle original wooden cases

1237 12 bottles *per lot \$1,000-1,500*

Château Le Tertre-Roteboeuf 2000

Saint-Emilion, grand cru classé

In two six-bottle original wooden cases

1238 12 bottles *per lot \$2,400-3,500*

Château Le Tertre-Roteboeuf 2001

Saint-Emilion, grand cru classé

Lots 1239-1241 in original wooden cases

Parcel: lots 1239-1241

1239 12 bottles *per lot \$800-1,200*

1240 12 „

1241 12 „

CHAPOUTIER

Fac et Spera

1998

Récolte

LA MORDORÉE

CÔTE RÔTIE

APPELLATION CÔTE RÔTIE CONTRÔLÉE

Mis en bouteille par

M. CHAPOUTIER

26600 - TAIN (France)

L 2261
150cl - 1500ml

Red wine - Vin rouge

Produit de France - Product of France

M. CHAPOUTIER

2000

L'ERMITAGE

ERMITAGE

APPELLATION ERMITAGE CONTRÔLÉE

MIS EN BOUTEILLE PAR

M. CHAPOUTIER

26600 - TAIN (France)

PRODUIT DE FRANCE - PRODUCT OF FRANCE

CHAPOUTIER

2003

LE MÉAL

ERMITAGE

APPELLATION ERMITAGE CONTRÔLÉE

CHAPOUTIER

CHAPOUTIER

1990

ERMITAGE

APPELLATION ERMITAGE CONTRÔLÉE

"LE PAVILLON"

Mis en bouteille par

M. CHAPOUTIER

REGULANTS - ELEVÉS

CHAPOUTIER

FAC ET SPERA

26660 TAIN

PRODUCT OF FRANCE







CHAPOUTIER

The family motto "Fac et Spera" – do and hope – says it all.

Two words that sum up all the patience and daring that this art demands: patience in relation to nature which presides; daring for the winemaker, who observes, chooses and assists. These are the words that represent the Chapoutier ethos.

Michel Chapoutier is one of the most highly regarded winemakers in France. Taking over the family firm founded in 1808, at age 26, Michel Chapoutier was in 1990 at the end of a long line of succession. Under his stewardship he transformed a rather traditional and commercial enterprise into a leading Rhône Valley producer recognized the world over. He combines the modern and the traditional: crusading for biodynamic winemaking, while expanding operations around the globe and experimenting with cutting edge winemaking techniques.

Chapoutier now produces the most diverse and complex wines to be found in the northern Rhône. All the vineyards are now run on biodynamic principles, with the grapes in Hermitage and Châteauneuf du Pape being totally destemmed prior to fermentation. Previously, Chapoutier wines were criticized for the length of time they spent in old wood - Michel Chapoutier has thrown out the old chestnut foudres and now the wines spend a maximum of 18 months in small oak casks, up to a third of which are new. Chapoutier's wines are bottled unfiltered and unfiltered to help preserve their character.

Crucial to Michel Chapoutier's philosophy is the production of "tête de cuvées", which include La Mordorée made from 60 year old vines on the Côte Blonde and Hermitage La Pavillon from 70 year old vines at the base of Les Bessards. Michel Chapoutier first produced Hermitage Vin de Paille in 1990 and it is by far the finest sweet wine produced in the Rhône Valley.

Chapoutier's portfolio of wines under representation at Christie's:

Estate-bottled luxury cuvées

Hermitage L'Ermite, rouge – the most prized for followers of Chapoutier. Located at the top of Hermitage Hill, this is Chapoutier's most powerful expression of Syrah. Micro production

Hermitage Le Pavillon – from the oldest vines planted in Les Bessards 85-95 yrs old.

Le Méal, rouge – known for exceptional perfume; hand harvested, micro production

Hermitage, Vin de Paille – several selective pickings before being put to dry on a bed of straw for at least two months before pressing. The Yquem of the South – liquid gold.

Côte-Rôtie, La Mordorée – a parcel of vines 90-100 years old, in close proximity to Guigal's famed La Turque. Highly limited production, 400-700 cases.

Châteauneuf-du-Pape, Barbe Rac – made from a vineyard planted in 1901

Châteauneuf-du-Pape, Croix de Bois – from vines approximately half the age of those found at Barbe Rac this is a dense and distinctive expression of 100% old vine Grenache. First vintage bottled 1998

**Chapoutier, Ermitage Le Pavillon 1990***Rhone**Levels: 2.5cm or better; one lightly bin soiled label**In individual original wooden case*1242 1 magnum *per lot \$500-700***Chapoutier, Ermitage Le Pavillon 1991***Rhone**Lot 1243 levels: three 2.5cm, two 3cm; lightly bin soiled labels, in two three-magnum original wooden cases**Lot 1244 levels: 2.5cm; lightly bin soiled labels*1243 5 magnums *per lot \$2,400-3,200*1244 10 bottles *per lot \$2,400-3,200***Chapoutier, Ermitage Le Pavillon 1992***Rhone**Lot 1245 lightly bin soiled labels and creased labels**Lot 1250 one lightly stained label**All lots with levels of 2.5cm or better**Lot 1245 one in individual wooden case, three in three magnum original wooden case**Lots 1247-1250 in two six-bottle original wooden cases**Lot 1246 in original wooden case**Parcel: lots 1247-1250*1245 4 magnums *per lot \$800-1,200*1246 3 „ *per lot \$600-800*1247 12 bottles *per lot \$1,200-1,600*

1248 12 „

1249 12 „

1250 12 „

Chapoutier, Ermitage Le Pavillon 1993*Rhone**Lots 1251-1252 levels: 2.5cm or better; lightly bin soiled labels**Lots 1251-1252 in two three-bottle original wooden cases**Lot 1253 levels: 1.0cm or better; lightly bin soiled labels*1251 6 magnums *per lot \$700-1,000*

1252 6 „

1253 12 bottles *per lot \$700-1,000***Chapoutier, Ermitage Le Pavillon 1994***Rhone**Both lots with levels: 2.5cm or better; lightly bin soiled labels**Both lots in original wooden cases**Parcel: lots 1254-1255*1254 6 magnums *per lot \$1,000-1,600*

1255 6 „

Chapoutier, Ermitage Le Pavillon 1995*Rhone**Both lot levels: 2.5cm or better; lightly bin soiled labels**Both lots in original wooden cases**Parcel: lots 1256-1257*1256 6 magnums *per lot \$1,400-1,900*

1257 6 „

Chapoutier, Ermitage Le Pavillon 1995*Lot 1258 levels: 2.5cm or better; lightly bin soiled labels**Lot 1259-1265 levels: 2.5cm or better**Lot 1259-1265 in two six-bottle original wooden cases**Parcel: lots 1259-1265*1258 12 bottles *per lot \$1,400-1,900*

1259 12 „

1260 12 „

1261 12 „

1262 12 „

1263 12 „

1264 12 „

1265 12 „

Chapoutier, Ermitage Le Pavillon 1996*Rhone**Lots 1266-1267 in original wooden cases**Lots 1268-1272 in two-six bottle original wooden cases**Parcel: lots 1266-1267, 1268-1272*1266 6 magnums *per lot \$1,100-1,600*

1267 6 „

1268 12 bottles *per lot \$1,100-1,600*

1269 12 „

1270 12 „

1271 12 „

1272 12 „

Chapoutier, Ermitage Le Pavillon 1997*Rhone**Both lots in original wooden cases**Parcel: lots 1273-1274*1273 6 magnums *per lot \$1,000-1,500*

1274 6 „

Chapoutier, Ermitage Le Pavillon 1997*Rhône**All in two six-bottle original wooden cases**Parcel: lots 1275-1280*1275 12 bottles *per lot \$1,000-1,500*

1276 12 „

1277 12 „

1278 12 „

1279 12 „

1280 12 „

**Chapoutier, Ermitage Le Pavillon 1998***Rhône**All in original wooden cases**Parcel: lots 1281-1283*

1281	6 magnums	<i>per lot \$1,000-1,500</i>
1282	6 „	
1283	6 „	

Chapoutier, Ermitage Le Pavillon 1999*Rhône**Lot 1284 in original wooden case**Lots 1294-1299 in two six bottle original wooden cases**Parcel: lots 1294-1299*

1284	6 magnums	<i>per lot \$1,200-1,800</i>
1285	12 bottles	<i>per lot \$1,200-1,800</i>
1286	12 „	
1287	12 „	
1288	12 „	
1289	12 „	
1290	12 „	
1291	12 magnums	<i>per lot \$1,200-1,800</i>

Chapoutier, Ermitage Le Pavillon 2000*Rhône**Lots 1292-1293 in two three-bottle original wooden cases**Lots 1294-1299 in two six bottle original wooden cases**Parcel: lots 1292-1293, 1294-1299*

1292	6 magnums	<i>per lot \$1,000-1,500</i>
1293	6 „	
1294	12 bottles	<i>per lot \$1,200-1,800</i>
1295	12 „	
1296	12 „	
1297	12 „	
1298	12 „	
1299	12 „	

Chapoutier, Ermitage Le Pavillon 2001*Rhône**Lots 1301-1305 in two six bottle original wooden cases**Lot 1300 in original wooden case**Parcel: lots 1301-1305*

1300	6 magnums	<i>per lot \$1,200-1,800</i>
1301	12 bottles	<i>per lot \$1,200-1,800</i>
1302	12 „	
1303	12 „	
1304	12 „	
1305	12 „	

Chapoutier, Ermitage Le Pavillon 2002*Rhône**Lot 1306 in two three-bottle original wooden cases**Lots 1307-1309 in two six-bottle original wooden cases**Parcel: lots 1307-1309*

1306	6 magnums	<i>per lot \$800-1,000</i>
1307	12 bottles	<i>per lot \$800-1,000</i>
1308	12 „	
1309	12 „	

Chapoutier, Ermitage Le Pavillon 2003*Rhône**Lots 1310-1311 in individual original wooden cases**Lots 1312-1316 in two six-bottle original wooden cases**Parcel: lots 1310-1311*

1310	6 magnums	<i>per lot \$2,400-3,200</i>
1311	6 „	
1312	12 bottles	<i>per lot \$2,400-3,200</i>
1313	12 „	
1314	12 „	
1315	12 „	
1316	12 „	

Chapoutier, Ermitage Le Pavillon 2004*Rhône**Lot 1317 in two three-bottle original wooden cases**Lots 1318-1320 in two six-bottle original wooden cases**Parcel: lots 1318-1320*

1317	6 magnums	<i>per lot \$900-1,200</i>
1318	12 bottles	<i>per lot \$900-1,200</i>
1319	12 „	
1320	12 „	

**Chapoutier, Ermitage Le Pavillon 2005***Rhone**In two six-bottle original wooden cases*1321 12 bottles *per lot* \$1,200-1,800**Chapoutier, Ermitage L' Ermite 1996***Rhone**In original wooden case*1322 6 bottles *per lot* \$1,000-1,500**Chapoutier, Ermitage L' Ermite 1998***Rhone**Lot 1323 in two six-bottle original wooden cases**Lot 1324 six torn and nicked labels*1323 12 bottles *per lot* \$1,500-2,0001324 6 ,, *per lot* \$750-1,000**Chapoutier, Ermitage L' Ermite 1999***Rhone**Lot 1325 in two six-bottle original wooden cases**Lot 1326 in original wooden case*1325 12 bottles *per lot* \$1,500-2,0001326 6 ,, *per lot* \$750-1,250**Chapoutier, Ermitage L' Ermite 2000***Rhone**Lot 1327 in individual original wooden cases**Lot 1328 in two six- bottle original wooden cases*1327 3 magnums *per lot* \$750-9501328 12 bottles *per lot* \$1,500-2,000**Chapoutier, Ermitage L' Ermite 2005***Rhone**In two six-bottle original wooden cases*1329 12 bottles *per lot* \$1,500-2,000**Chapoutier, Ermitage Le Méal 1996***Rhone**In two six-bottle original wooden cases*1330 12 bottles *per lot* \$800-1,200**Chapoutier, Ermitage Le Méal 1999***Rhone**In two six-bottle original wooden cases*1331 12 bottles *per lot* \$1,200-1,800**Chapoutier, Ermitage Le Méal 2000***Rhone**In original wooden case*1332 3 magnums *per lot* \$500-750**Chapoutier, Ermitage Le Méal 2003***Rhone**Lot 1333 in individual original wooden cases**Lot 1334 in two six-bottle original wooden cases**Lot 1335 in original wooden case*1333 6 magnums *per lot* \$1,200-1,7001334 12 bottles *per lot* \$1,200-1,7001335 6 ,, *per lot* \$600-850**Chapoutier, Ermitage Le Méal 2005***Rhone**In two six-bottle original wooden cases*1336 12 bottles *per lot* \$1,000-1,500**Chapoutier, Vin de Paille 1997***Rhone**In four three-bottle original wooden cases*1337 12 half-bottles *per lot* \$900-1,200**Chapoutier, Vin de Paille 1999***Rhone**In four three-bottle original wooden cases*1338 12 half-bottles *per lot* \$900-1,200



E. Guigal Côte-Rôtie La Landonne 2001

Rhône

In original wooden case

1339 12 bottles *per lot* \$3,000-5,000

E. Guigal Côte-Rôtie La Mouline 2001

Rhône

In original wooden case

1340 12 bottles *per lot* \$2,400-3,500

E. Guigal Côte-Rôtie La Turquie 2001

Rhône

In original wooden case

1341 12 bottles *per lot* \$2,400-3,400

E. Guigal Côte-Rôtie La Turquie 1995

Rhône

Levels: 2.5cm or better

In original wooden case

1342 12 bottles *per lot* \$3,000-4,500

Domaine Pegau Châteauneuf-du-Pape Cuvée da Capo 1998

Rhône

1343 12 bottles *per lot* \$3,000-5,000

GUIGAL

LA LANDONNE

2001
LA LANDONNE
MMI

2001
LA LANDONNE
MMI
GUIGAL

LA LANDONNE



MOSAÏQUE GALLO-ROMAINE

CÔTE-RÔTE
APPELLATION CÔTE-RÔTE

France

UNGRÉ, ÉLEVÉ ET M...

S
C
H
A
R
N
H
O
F
B
E
R
G
E
R



**Egon Müller, Scharzhofberger, Riesling,
Trockenbeerenauslese 2005**

Saar

AP #11

Parcel: lots 1324-1325

“Finding half bottles of Egon Müller’s TBA is already very difficult. Offered here is not one, but two magnums of TBA. There is something hedonistic yet slightly sinful by opening (or even owning) 1.5 liters of TBA. Maybe it’s the extravagance or maybe because at 5.5% alcohol by volume, this is barely legal... to be called wine.” RY

1344 1 magnum *per lot* \$7,000-11,000

1345 1 „



GRANGE

“Nothing Stands Still”

PENFOLDS

“Nothing stands still” – Peter Gago, Penfolds Chief Winemaker

Penfolds is a magnificent operation to behold. With over 170 years of continuous harvests they are at once the standard bearer of Australian fine wine and the pioneers of innovation.

Within the world of Penfolds to wines two reds have long reigned supreme as iconic, world class wines: Bin 95 Grange Hermitage/Shiraz and Bin 707 Cabernet Sauvignon.

GRANGE HERMITAGE

From its earliest experimental days (1951; 1952 first commercial release) Bin 95 Grange “Hermitage” was ever the maverick bucking the wine making styles of the day. Unlike today, aging wines in small, Bordeaux like barrels, was unheard of in Australia 1952. “Too powerful” cried critics of Max Schubert, Penfolds visionary winemaker. “A very good, dry port, which no one in their right mind will by – let alone drink,” such was the opinion of one top management critic after sampling Schubert’s earliest pre 1957 attempts. The experiment was ordered shuttered and destroyed by none other than Gladys Penfold Hyland, Chairman of the Board.

Bin 95 needed a chevalier. Over at Magill Estate, assistant general manager, Jeffrey Penfold Hyland became the protector of Schubert’s Bin 95 experiment. Stashed out of sight from the prying eyes of Penfolds executives 870 miles away in the underground cellars at Magill, ‘hidden Granges’ were made without knowledge of the Board. Bin 95 remained uncommercial and secretive to all but the closest advocates and trusted advisors. With time to experiment, and additional harmony from bottle aging the rumor of Schubert’s “secret” wine became less so. By 1960, some of the same rejecting board members were organized for a re-tasting. This time however Schubert had won over many critics and powerful influencers. This time around Grange Hermitage was a massive success, the board ordered the production to restart in earnest just in time for the 1960 vintage. This was also the year when Max Schubert was promoted to National Production Manager (Chief Winemaker).

On offer today are the distinctive Granges styles of Chief Winemakers, Don Ditter and John Duval. The 1986 vintage is Ditter’s last vintage and largely recognized as one of the greatest Grange vintages of all time. Ditter signature upon Grange is best remembered for adding extra polish and finesse to the powerful wine. John Duval was an understudy to many at Penfolds, notably Ditter and Schubert. When he achieved his appointment as Chief Winemaker he was the youngest ever to head up the post. Under Duval’s stewardship Penfolds achieved some of its most profound developments and innovations. The 1990, 1991, 1996, 1998 on offer in the following pages are regarded as Duval’s finest vintages. The 1990 vintage in particular was awarded “Wine of the Year” by Wine Spectator.



Penfolds
Grange

VINTAGE 1990

DEDICATED TO
MAX SCHUBERT
1915-1994

Penfolds
Grange

VINTAGE 1990 BOTTLED 1991
BIN 95

Grange is recognised as Australia's and indeed one of the world's finest red wines. This great wine, developed by Max Schubert commencing with the 1951 vintage, is made from low yielding Shiraz vines grown at selected vineyards in South Australia. During an extensive tour of the Bordeaux region of France in 1950, Max Schubert studied winemaking practices that have become an integral part of Penfolds' winemaking technique. He also observed the practice of maturing wine in new oak casks, a technique previously untried in Australia. The development of this tradition, the beginning of a new era in Australia's red wine-making, and dedication, has resulted in Grange, the definitive Australian red wine style.

Bottled by PENFOLDS WINES PTY. LTD.
PENFOLDS WINES PTY. LTD., PENFOLD ROAD, MAGILL, AUSTRALIA 5022
75cl WINE PRODUCE OF AUSTRALIA 13.5% VOL

DEDICATED TO
MAX SCHUBERT
1915-1994

Penfolds
Grange

VINTAGE 1990 BOTTLED 1991
BIN 95

It is a legend that Australia's and indeed one of the world's finest red wines, this great wine, developed by Max Schubert commencing with the 1951 vintage, is made from low yielding Shiraz vines grown at selected vineyards in South Australia and during an extensive tour of the Bordeaux region of France in 1950, Max Schubert studied winemaking practices that have become an integral part of Penfolds' winemaking technique. He also observed the practice of maturing wine in new oak casks, a technique previously untried in Australia. The development of this tradition, the beginning of a new era in Australia's red wine-making, and dedication, has resulted in Grange, the definitive Australian red wine style.

Lot 1352



Penfolds, Grange Hermitage

South Australia

1980

Levels: bottom neck; two lightly bin soiled labels, one nicked label

(3)

1981

Levels: bottom neck

(3)

1346 6 bottles per lot \$1,700-2,400

Penfolds Grange Hermitage 1983

South Australia

Lot 1347 levels: one bottom neck, ten top shoulder, one upper shoulder; lightly bin soiled labels

Lot 1348 levels: bottom neck; lightly bin soiled labels

1347 12 bottles per lot \$3,000-5,000

1348 5 bottles per lot \$1,200-1,800

Penfolds, Grange Hermitage

South Australia

1985

(2)

1986

(5)

Both levels: into neck; nicked and lightly bin soiled labels

1349 7 bottles per lot \$2,200-3,200

Penfolds, Grange Hermitage 1988

South Australia

Levels: bottom neck

1350 6 bottles per lot \$1,300-1,900

Penfolds, Grange Hermitage 1989

South Australia

Levels: bottom neck

1351 9 bottles per lot \$2,400-3,500

Penfolds, Grange 1990

South Australia

Lot 1352 in two six bottle original wooden cases

Lot 1353 in original wooden case

1352 12 bottles per lot \$3,500-5,000

1353 6 bottles per lot \$1,800-2,400

Penfolds, Grange

South Australia

1991

(6)

1992

(6)

Both levels: into neck

1354 12 bottles per lot \$3,200-5,000

Penfolds, Grange 1993

South Australia

In two six-bottle original wooden cases

1355 12 bottles per lot \$3,000-5,000

1356 7 ,, per lot \$1,700-2,400

Penfolds, Grange 1994

South Australia

Levels: into neck

Six bottles in original wooden case

1357 11 bottles per lot \$2,600-3,200

Penfolds, Grange 1995

South Australia

In two six-bottle original wooden cases

1358 12 bottles per lot \$3,000-5,000

Penfolds, Grange

South Australia

1996

(5)

1997

(2)

1998

(2)

1359 9 bottles per lot \$2,200-3,200

Penfolds, Grange 1997

South Australia

In two six-bottle original wooden cases

1360 12 bottles per lot \$2,600-3,800



Per Holmberg, VP, Head of Department

Penfolds, Grange 2001

There is Shiraz from Australia and then there is Penfold's Grange. No other wine in the Southern hemisphere can compete with Grange when it comes to consistency and track record. The 2001 vintage is a fantastic wine, it is right up there with their classic vintages of 71, 76, 82, 98. The wine possess an impeccable balance with multi layered texture, it has started to shed some of its tannins and really starting to show its greatness. It is hard to refrain from drinking now but patience will be rewarded!

Penfolds, Grange 2001

South Australia

All lots in two six-bottle original wooden cases

Parcel: lots 1361-1363

1361 12 bottles per lot \$3,000-5,000

1362 12 bottles per lot \$3,000-5,000

1363 12 ,,

**RUNRIG****Tobreck, RunRig 1997***South Australia*1364 12 bottles *per lot \$1,200-1,800***Tobreck, RunRig 1998***South Australia*1365 12 bottles *per lot \$1,200-1,800***Tobreck, RunRig 1999***South Australia**In two six-bottle original wooden cases, one missing lid*1366 12 bottles *per lot \$1,000-1,500***ASTRALIS****Clarendon Hills Astralis 1995***McLaren Vale**Levels: 1.0cm or better*1367 12 bottles *per lot \$1,000-1,500***Clarendon Hills Astralis 1996***McLaren Vale*1368 12 bottles *per lot \$1,400-1,800***Clarendon Hills Astralis 1997***McLaren Vale*1369 12 bottles *per lot \$1,400-1,800***Clarendon Hills Astralis 1998***McLaren Vale*1370 12 bottles *per lot \$1,800-2,400***Clarendon Hills Astralis***McLaren Vale***1999***(6)***2001***(6)*1371 12 bottles *per lot \$1,500-2,000***RARE VEGA SICILIA****Vega Sicilia, Unico 1962***Ribera del Duero**Levels: bottom neck; lightly oxidized capsules, loose labels**Three bottles in original wooden case*1372 4 bottles *per lot \$3,200-5,500***Vega Sicilia, Unico 1968***Ribera del Duero**Levels: into neck; bin soiled and nicked labels*1373 2 bottles *per lot \$1,600-2,000***Vega Sicilia, Unico 1974***Ribera del Duero**Levels: bottom neck; lightly bin soiled and nicked labels*1374 3 bottles *per lot \$900-1,200***Vega Sicilia, Unico 1989***Ribera del Duero**Levels: into neck**In original wooden case*1375 6 bottles *per lot \$1,300-1,800*



QUINTA DO NOVAL
1994
VINTAGE
NACIONAL

PORT
PRODUCED FROM PRE-PHYLLOXERA VINES
BOTTLED AND SHIPPED BY
QUINTA DO **NOVAL** - VINHOS
VILA NOVA DE GAIA
Produce of Portugal
BOTTLED IN 1996

QUINTA DO NOVAL
1994
VINTAGE
NACIONAL

PORT
PRODUCED FROM PRE-PHYLLOXERA
BOTTLED AND SHIPPED BY
QUINTA DO **NOVAL** - VINHOS
VILA NOVA DE GAIA
Produce of Portugal
BOTTLED IN 1996

QUINTA DO NOVAL
1994
VINTAGE
NACIONAL

PORT
PRODUCED FROM PRE-PHYLLOXERA
BOTTLED AND SHIPPED BY
QUINTA DO **NOVAL** - VINHOS
VILA NOVA DE GAIA
Produce of Portugal
BOTTLED IN 1996

QUINTA DO NOVAL
1994
VINTAGE
NACIONAL

PORT
PRODUCED FROM PRE-PHYLLOXERA VINES
BOTTLED AND SHIPPED BY
QUINTA DO **NOVAL** - VINHOS, S.A.
VILA NOVA DE GAIA
Produce of Portugal
BOTTLED IN 1996

VINHO DO PORTO
799609
GARANTIA

VINHO DO PORTO
799610
GARANTIA

VINHO DO PORTO
799612
GARANTIA

VINHO DO PORTO
799605
GARANTIA



20.5% vol



100 POINT PX FROM TORO ALBALA

Toro Albala, Don PX, Convento Selección 1946

Montilla Moriles

In individual presentation cases

“The 1946 Don PX Convento Seleccion produced with Pedro Ximenez grapes dehydrated under the sun at the time of the Second World War, was only bottled in September 2011. This is an extreme wine, my first descriptor was ultra-mega-super concentrated. It is unbelievably powerful, both in the nose and the palate, full of umami, with sweet cinnamon, Christmas cake, camphor, petrol, lemongrass, Belgian chocolate and butter. Incredibly complex and rich, sweet, balanced and smooth in the palate, it is both very sweet and somehow salty, and with time it develops a black olive note. It combines the texture of the 1962 and the elegance of the 1949. It is as decadent as it gets. 825 bottles were produced. This wine will survive all of us. These wines are kept for generations and offered in very small quantities, but it’s amazing that you can still buy and drink something so old, and I’m even tempted to say that it might represent good value for what it is. A real tour de force sweet wine. Drink it if you ever have the privilege to do so from 2013-2060.”
Luis Gutierrez, Wine Advocate #208, August 2013

1376 5 bottles *per lot \$500-1,000*

Quinta do Noval, Nacional 1994

In original wooden case

1377 6 bottles *per lot \$3,800-4,800*

Taylor 1997

In original wooden case

1381 12 bottles *per lot \$400-600*

END OF SALE



Edwin Vos, *Head of Continental Europe*

Taylor 1985

Fine Claret-styled nose, blackberries, cedar and good intensity. Remarkable young, cassis, freshness. In taste finesse and pure fruit soft tannins and great length. A very small hint of pure ripe cassis fruit as found in a top class Chilean cabernet. All seductive. Well balanced.

Taylor 1985

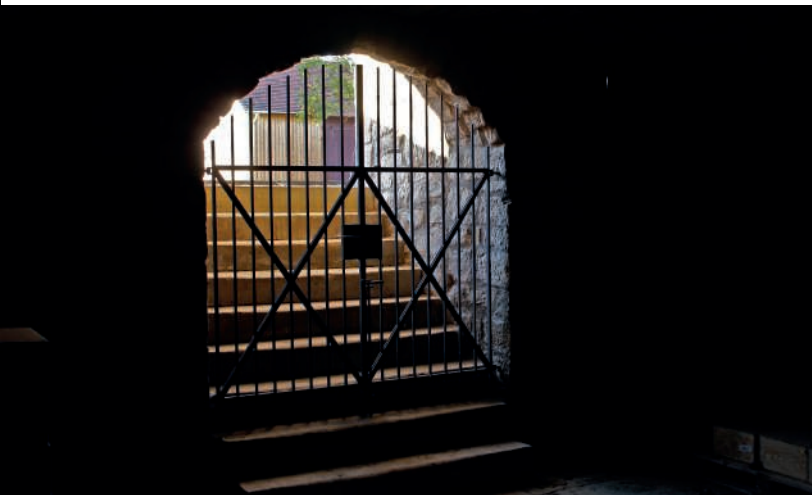
All lots in original wooden cases

Parcel: lots 1378-1380

1378 12 bottles *per lot \$600-840*

1379 12 „

1380 12 „



INDEX

AUSTRALIA

1983

Penfolds Grange, 1347,1348

1988

Penfolds Grange, 1350

1989

Penfolds Grange, 1351

1990

Penfolds Grange, 1352,1353

1993

Penfolds Grange, 1355

1994

Penfolds Grange, 1357

1995

Clarendon Hills Astralis, 1367

Penfolds Grange, 1358

1996

Clarendon Hills Astralis, 1368

1997

Clarendon Hills Astralis, 1369

Penfolds Grange, 1360

Torbreck, RunRig, 1364

1998

Clarendon Hills Astralis, 1370

Torbreck, RunRig, 1365

1999

Torbreck, RunRig, 1366

2001

Penfolds Grange, 1361,1362

VERTICALS

Clarendon Hills Astralis, 1371

Penfolds Grange,

1346,1349,1354,1359

CLARET

1945

Mouton-Rothschild, 661

1947

Cheval-Blanc, 1154

Pétrus, 1026

1948

Pétrus, 1027

1950

Pétrus, 1028,1029

1952

Pétrus, 1030

1953

Pétrus, 1032,1033,1034

1955

Pétrus, 1035

1956

Ausone, 1166

Lafite-Rothschild, 624

Latour, 643

Léoville-Las-Cases, 966

Margaux, 733

1958

Pétrus, 1037

1959

Mouton-Rothschild, 662

1960

Pétrus, 1038

1961

Haut-Brion, 752

Latour, 644

Latour-a-Pomerol, 1070

1962

Léoville-Las-Cases, 968

1963

Pétrus, 1039

1964

Pape Clément, 1007

1966

Pétrus, 1040

1967

Lafleur, 1072

1969

Pétrus, 1041

1970

Cos d'Estournel, 859

Pétrus, 1042

1974

Pétrus, 1043

1975

Lafleur, 1073

Mouton-Rothschild, 664

Pétrus, 1045

1976

Pétrus, 1046

1977

Pétrus, 1048

1979

Lafleur, 1074

Pétrus, 1050

1980

Pétrus, 1052

1981

Pétrus, 1053

1982

Cheval-Blanc, 1155

Mouton-Rothschild, 665

Pétrus, 1055

Pichon, Lalande, 892

1983

Pétrus, 1056

Pichon, Lalande, 893

1984

Lafleur, 1075

Pétrus, 1058

1985

Pétrus, 1059

1986

Cheval-Blanc, 1156

Eglise Clinet, 1119

Haut-Brion, 753

Lafite-Rothschild, 625

Mouton-Rothschild, 667

Pétrus, 1060,1061

1987

Pétrus, 1062

1988

Lafite-Rothschild, 626

Lafleur, 1076

Mouton-Rothschild, 675

Pétrus, 1063,1064

Pichon, Lalande, 894

1989

Haut-Brion, 755

La Conseillante, 1148

Mouton-Rothschild, 676

Pétrus, 1065

Pichon, Baron, 881

1990

Latour, 652

Montrose, 863

Mouton-Rothschild, 678

Pétrus, 1066,1067

Pichon, Lalande,

895,896,897,898

1991

Mouton-Rothschild, 682

1992

Mouton-Rothschild, 693

Pichon, Lalande, 899

Troplong-Mondot, 1212

1993

Cheval Blanc, 1157

Haut-Brion, 756

La Conseillante, 1151

Lafite-Rothschild, 627,628

Lafleur, 1077

Latour, 645

Margaux, 734

Mouton-Rothschild, 695

Pétrus, 1069

Pichon, Lalande, 900

Valandraud, 1221

1994

Haut-Brion, 758

Lafleur, 1087

Léoville Barton, 954

Léoville-Las-Cases, 969

Mouton-Rothschild, 700

Palmer, 993

Troplong-Mondot, 1213

1995

Ducru-Beaucaillou, 931

Lafleur, 1091

Le Pin, 1108

Margaux, 735,736

Mouton-Rothschild, 704

Pichon, Lalande, 901

Tertre-Roteboeuf, 1235

1996

Angelus, 1174,1175

Calon-Ségur, 841

Cheval Blanc, 1159

Ducru-Beaucaillou, 932

L'Eglise Clinet, 1120

Lafleur, 1093

Latour, 647

Le Pin, 1109

Léoville-Las-Cases, 970

Margaux, 738

Mouton-Rothschild, 706

Pichon, Lalande, 906

Pichon, Baron, 884

1997

Angelus, 1176

Ausone, 1167

Calon-Ségur, 844,845

Cos d'Estournel, 861,862

Ducru-Beaucaillou, 935

Gruaud-Larose, 944

Haut-Brion, 759

Lafite-Rothschild, 629

Lafleur, 1095

Latour, 654

Léoville Poyferré, 980

Léoville-Las-Cases, 971

Lynch-Bages, 869

Margaux, 739

Mouton-Rothschild, 707

Pichon, Lalande, 907

Pichon, Baron, 885

Valandraud, 1222

1998

Angelus, 1179,1182

Ausone, 1168

Clinet, 1142

Haut-Brion, 762

L'Eglise-Clinet, 1122

La Mondotte, 1200

Lafite-Rothschild, 630,631

Lafleur, 1097,1098,1099

Latour, 656

Le Pin, 1110

Léoville Barton, 955

Lynch-Bages, 870

Margaux, 740

Mouton-Rothschild, 712

Pavie, 1190

Pichon, Lalande, 910

Tertre-Roteboeuf, 1236

Valandraud, 1223

1999

Ausone, 1169

Calon-Ségur, 846

Cheval-Blanc, 1160

Gruaud-Larose, 949

L'Eglise-Clinet, 1123

La Fleur-Petrus, 1152

La Mission-Haut-Brion,

1000,1001

La Mondotte, 1203

Lafite-Rothschild, 632

Lafleur, 1100

Le Pin, 1111

Léoville Barton, 958

Léoville-Las-Cases, 973

Lynch-Bages, 871

Margaux, 741

Mouton-Rothschild, 714

Pape Clément, 1017

Pavie, 1191

Pichon, Baron, 886

Tertre-Roteboeuf, 1237

2000

Angelus, 1183

Ausone, 1172

Calon-Ségur, 847

Cheval-Blanc, 1161

Clinet, 1144

Ducru-Beaucaillou, 937

Figeac, 1231

Groupe Duclot, Bordeaux

Collection, 767

Gruaud-Larose, 950

Haut-Brion, 763

L'Eglise Clinet, 1124

La Mondotte, 1204

Lafite-Rothschild, 636

Lafleur, 1102,1103,1104

Le Pin, 1112

Léoville Barton, 959

Léoville-Las-Cases, 974

Lynch-Bages, 875,876

Margaux, 743

Montrose, 865

Mouton-Rothschild, 715

Palmer, 994

Pichon, Lalande, 912

Pichon, Baron, 887

Tertre-Roteboeuf, 1238

Troplong-Mondot, 1214

Valandraud, 1226

2001

Cheval Blanc, 1162,1163

Angelus, 1185

Calon-Ségur, 849

Cheval-Blanc, 1162

Clinet, 1146

Haut-Brion, 764

L'Eglise-Clinet, 1128

La Mission-Haut-Brion, 1002

La Mondotte, 1205

Lafite-Rothschild, 638

Lafleur, 1105

Le Pin, 1113

Margaux, 749,750,751

Montrose, 866

Mouton-Rothschild, 719

Palmer, 995

2003

Angelus, 1186
 Calon-Ségur, 855
 Cheval-Blanc, 1164
 Cos d'Estournel, 858
 Ducru-Beaucaillou, 943
 La Mission-Haut-Brion, 1005
 La Mondotte, 1209
 Lafite-Rothschild, 641
 Lafleur, 1107
 Latour, 649
 Léoville Barton, 964
 Léoville Poyferré, 991
 Léoville-Las-Cases, 975
 Margaux, 747,748
 Montrose, 868
 Mouton-Rothschild, 727
 Palmer, 996
 Pavie, 1194
 Pichon, Lalande, 928
 Pichon, Baron, 888
 Valandraud, 1230

2004

Angelus, 1187
 La Mission-Haut-Brion, 1006
 Le Pin, 1114, 1115

2005

Cheval-Blanc, 1165
 Mouton-Rothschild, 730
 Pape Clément, 1021, 1023, 1024
 Pavie, 1195
 Pichon, Baron, 889
 Troplong-Mondot, 1215

2007

Le Pin, 1116

2009

La Mondotte, 1210
 Léoville Barton, 965
 Léoville-Las-Cases, 978

2010

Le Pin, 1118

VERTICALS

Mouton-Rothschild, 732

GERMANY**2005**

Scharzhofberger, Riesling TBA
 (Müller), 1344

SHERRY/PORT**1946**

Toro Albala, Don PX,
 Convento Selección, 1376

1985

Taylor, 1378

1994

Quinta do Noval Nacional,
 1377

1997

Taylor, 1381

RED BURGUNDY**1989**

Pommard, Les Trois Follots
 (Leroy), 606
 Vosne-Romanée Les Beaux
 Monts (Leroy), 605

1991

La Tache (DRC), 602

1994

Echézeaux (DRC), 604
 Richebourg (DRC), 603

1996

Clos Vougeot (Prieur), 607
 Echézeaux (Prieur), 608
 Volnay Clos des Ducs
 (d'Angerville), 620

1997

Chambertin (Prieur), 612
 Musigny (Prieur), 611

1999

Chambertin (Prieur), 613
 Corton Bressandes (Prieur),
 615
 Echézeaux (Prieur), 610
 Gevrey-Chambertin, Aux
 Combottes (Dujac), 616, 617

2000

DRC Assortment, 601
 Gevrey-Chambertin, Aux
 Combottes (Dujac), 618, 619

RHONE**1992**

Chapoutier,
 Ermitage Le Pavillon,
 1246, 1247, 1248, 1249, 1250

1995

Chapoutier, Ermitage Le
 Pavillon, 1257
 Côte-Rôtie La Turque
 (Guigal), 1342

1996

Chapoutier, Ermitage L'
 Ermite, 1322
 Chapoutier, Ermitage Le Meal,
 1330

1997

Chapoutier Vin de Paille, 1337
 Chapoutier, Ermitage Le
 Pavillon, 1275

1998

Chapoutier, Ermitage L'
 Ermite, 1323
 CNDP Cuvée Capo (Pegau),
 1343

1999

Chapoutier Vin de Paille, 1338
 Chapoutier, Ermitage L'
 Ermite, 1325
 Chapoutier, Ermitage Le Méal,
 1331
 Chapoutier, Ermitage Le
 Pavillon, 1285

2000

Chapoutier, Ermitage L'
 Ermite, 1327
 Chapoutier, Ermitage Le Méal,
 1332
 Chapoutier, Ermitage Le
 Pavillon, 1300

2001

Côte-Rôtie La Landonne
 (Guigal), 1339
 Côte-Rôtie La Mouline
 (Guigal), 1340
 Côte-Rôtie La Turque
 (Guigal), 1341

2003

Chapoutier, Ermitage Le Méal,
 1333

2004

Chapoutier, Ermitage Le
 Pavillon, 1318

2005

Chapoutier, Ermitage L'
 Ermite, 1329
 Chapoutier, Ermitage Le Meal,
 1336

SPAIN**1962**

Vega Sicilia, Unico, 1372

1968

Vega Sicilia, Unico, 1373

1974

Vega Sicilia, Unico, 1374

1989

Vega Sicilia, Unico, 1375

WHITE BORDEAUX**1891**

d'Yquem, 768

1900

d'Yquem, 769

1901

d'Yquem, 770

1908

d'Yquem, 771

1911

d'Yquem, 772

1913

d'Yquem, 773

1914

d'Yquem, 774

1918

d'Yquem, 775

1921

d'Yquem, 776

1923

d'Yquem, 777

1925

d'Yquem, 778

1927

d'Yquem, 779

1928

d'Yquem, 780

1929

d'Yquem, 781

1933

d'Yquem, 782

1935

d'Yquem, 783

1936

d'Yquem, 784

1937

d'Yquem, 785

1938

d'Yquem, 786

1939

d'Yquem, 787

1940

d'Yquem, 788

1941

d'Yquem, 789

1943

d'Yquem, 790

1945

d'Yquem, 791

1946

d'Yquem, 792

1947

d'Yquem, 793

1948

d'Yquem, 794

1950

d'Yquem, 795, 796

1953

d'Yquem, 797

1954

d'Yquem, 798

1955

d'Yquem, 799

1956

d'Yquem, 800, 801

1957

d'Yquem, 802

1958

d'Yquem, 803

1959

d'Yquem, 804, 805

1960

d'Yquem, 806

1961

d'Yquem, 807

1967

d'Yquem, 809

1975

d'Yquem, 811

1981

d'Yquem, 812

1982

d'Yquem, 813

1983

d'Yquem, 814, 815

1986

d'Yquem, 816

1987

d'Yquem, 817

1988

d'Yquem, 819

1990

Haut-Brion, Blanc, 765

1993

Haut-Brion, Blanc, 766

1995

d'Yquem, 820, 823

1996

d'Yquem, 825

1997

d'Yquem, 827

2001

d'Yquem, 829, 830, 831
 L'Extravagant de Doisy-Daëne,
 840

2004

d'Yquem, 833

2009

d'Yquem, 839

VERTICALS

d'Yquem, 808, 810

WHITE BURGUNDY**1990**

Batard Montrachet (Ramonet),
 622

1991

Batard Montrachet (Ramonet),
 623

1996

Montrachet (Bouchard), 621



The Wine Cellarage is located in a former bank vault. It is the most secure and deeply entrenched location of the historic landmark American Banknote Company Building in Hunts Point, New York. Constructed in 1911, this expansive industrial fortress was designed to house facilities for the printing manufacture of international currencies. It is a wonder of industrial engineering, perfectly suited to wine storage.

Your wine is stored in a state-of-the art wine cellar, specially designed and fabricated by the Ingersoll Rand Climate Control Group with:

- R-25 vapour-barrier layered insulation, 50 to 70 percent controlled humidity and back-up compressors.
- Facility-wide video surveillance and central-station alarm monitoring with 24-hour guard service
- Approved by the U.S. Department of Homeland Security as a secure bonded warehouse.
- Bar coding and cellar location reporting are supported by wireless network hardware and software that sets the industry standard for warehouse tracking.

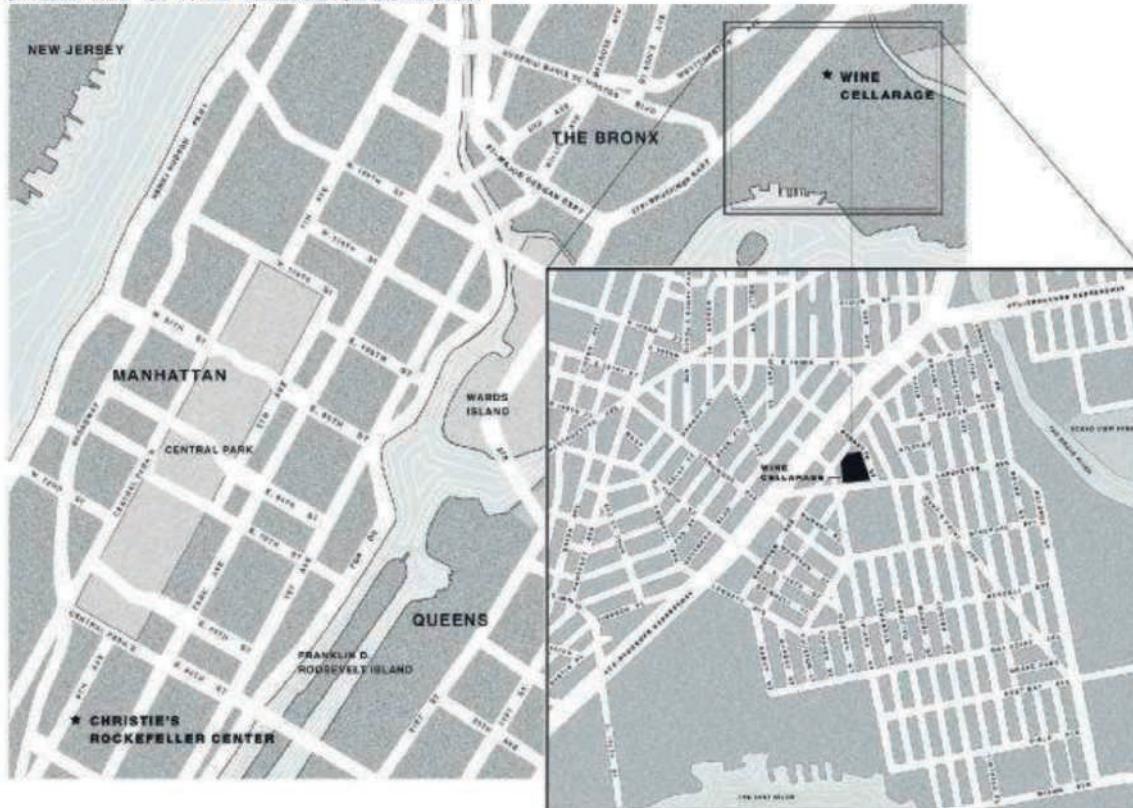
INTRODUCTORY RATES AT WINE CELLARAGE

Wine Cellarage has instituted the following introductory storage offer for all new clients referred by Christie's:

- 1 to 49 cases - \$2.50 per case/month with the first 2 months free
- 50 to 99 cases - \$2.40 per case/month with the first 3 months free
- 100 to 149 cases - \$2.30 per case/month with the first 4 months free
- More than 150 cases - \$2.00 per case/month with the first 4 months free

Note: \$30.00 minimum monthly fee. All contracts would require a one-year term that includes the months received free. The Wine Cellarage offers full replacement value insurance. Insurance costs 0.60% of the value of the wine per year for warehouse coverage or 1.50% of the value of the wine per year for warehouse and worldwide transport coverage. Subject to deductible. Please contact the Wine Cellarage for further information.

STREET MAP OF WINE CELLARAGE LOCATION



IMPORTANT NOTICES AND EXPLANATION OF CATALOGUING PRACTICE

IMPORTANT NOTICES

CHRISTIE'S INTEREST IN PROPERTY CONSIGNED FOR AUCTION

From time to time, Christie's may offer a lot which it owns in whole or in part. Such property is identified in the catalogue with the symbol Δ next to its lot number.

On occasion, Christie's has a direct financial interest in lots consigned for sale, which may include guaranteeing a minimum price or making an advance to the consignor that is secured solely by consigned property. Such property is identified in the catalogue with the symbol \circ next to the lot number. This symbol will be used both in cases where Christie's holds the financial interest on its own, and in cases where Christie's has financed all or part of such interest through third parties. When a third party agrees to finance all or part of Christie's interest in a lot, it takes on all or part of the risk of the lot not being sold, and will be remunerated in exchange for accepting this risk. The third party may also bid for the lot. Where it does so, and is the successful bidder, the remuneration may be netted against the final purchase price. If the lot is not sold, the third party may incur a loss. Where Christie's has an ownership or financial interest in every lot in the catalogue, Christie's will not designate each lot with a symbol, but will state its interest at the front of the catalogue.

In this catalogue, if property has $\circ \blacklozenge$ next to the lot number, Christie's guarantee of a minimum price has been fully financed through third parties.

ALL DIMENSIONS ARE APPROXIMATE

CONDITION REPORTS

Christie's catalogues include references to condition only in descriptions of multiple works (such as prints, books and wine). Please contact the Specialist Department for a condition report on a particular lot.

Condition reports are provided as a service to interested clients. Prospective buyers should note that descriptions of property are not warranties and that each lot is sold "as is."

PROPERTY INCORPORATING MATERIALS FROM ENDANGERED AND OTHER PROTECTED SPECIES

Property made of or incorporating (irrespective of percentage) endangered and other protected species of wildlife are marked with the symbol \sim in the catalogue. Such material includes, among other things, ivory, tortoiseshell, crocodile skin, rhinoceros horn, whale bone and certain species of coral, together with Brazilian rosewood. Prospective purchasers are advised that several countries prohibit altogether the importation of property containing such materials, and that other countries require a permit (e.g., a CITES permit) from the relevant regulatory agencies in the countries of exportation as well as importation. Accordingly, clients should familiarize themselves with the relevant customs laws and regulations prior to bidding on any property with wildlife material if they intend to import the property into another country.

Please note that it is the client's responsibility to determine and satisfy the requirements of any applicable laws or regulations applying to the export or import of property containing endangered and other protected wildlife material. The inability of a client to export or import property containing endangered and other protected wildlife material is not a basis for cancellation or rescission of the sale. Please note also that lots containing potentially regulated wildlife material are marked as a convenience to our clients, but Christie's does not accept liability for errors or for failing to mark lots containing protected or regulated species.

OPTIONS TO BUY PARCELS

A parcel, as denoted in the catalogue, is a sequence of lots carrying the same estimates and consisting of the same type of wine, quantity and bottle size.

In the sale, the buyer of the first lot of a parcel of wine will have, at the discretion of the auctioneer, the option to take any or all further lots in the parcel for the same hammer price.

If the option is not exercised on all lots in the same parcel, the auctioneer will open bidding on the next unsold lot and offer the buyer of that lot the option to take any or all of the remaining lots in the parcel sequence.

Absentee bids submitted on any lot in a parcel will, if unsuccessful, be placed on successive lots in the parcel until such bid is successful or the parcel has ended.

Bidding shall continue in the same manner until all lots in the parcel have been offered and declared sold or unsold by the auctioneer.

CLASSIFICATIONS

Classifications in the text are for identification purposes only and are based on the official 1855 classification of the Médoc and other standard sources

All wines are bottled by the producer (Château or estate owner) unless otherwise indicated by the initials Bordeaux Bottled BB and English Bottled EB.

ULLAGES AND CORKS OF OLD WINES

Wines are described in this catalogue as correctly as can be ascertained at time of going to press, but buyers of old wines must make appropriate allowances for natural variations of ullages, conditions of cases, labels, corks and wine. No returns will be accepted.

ULLAGE

The amount by which level of wine is short of being full: these levels may vary according to age of the wines and, as far as can be ascertained by inspection prior to the sale, are described in the catalogue.

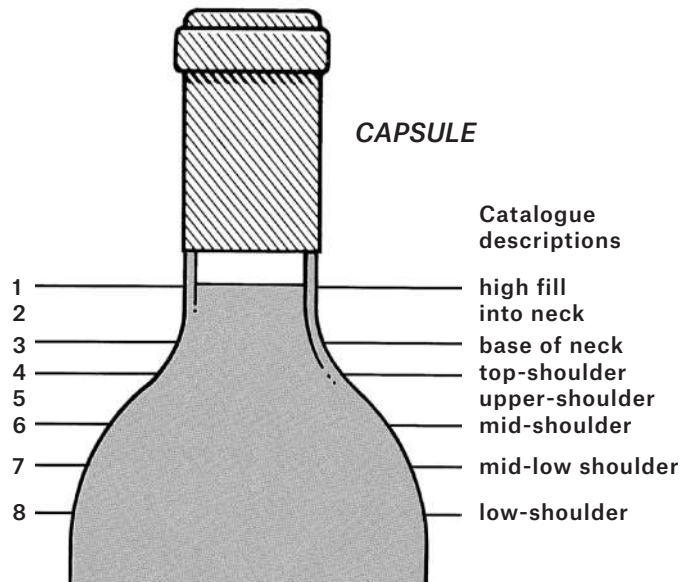
SHIPPING AND COLLECTION: WINE

All wines are held at Christie's facility at The Wine Cellarage. Buyers are expected to remove their property within 7 calendar days of the auction. A Christie's Collection and Delivery Form is enclosed with each invoice and is available on the Christie's website. It is the buyer's responsibility to pick up purchases or make all shipping arrangements. After payment has been made in full, Christie's can arrange property packing and shipping at the buyer's request and expense.

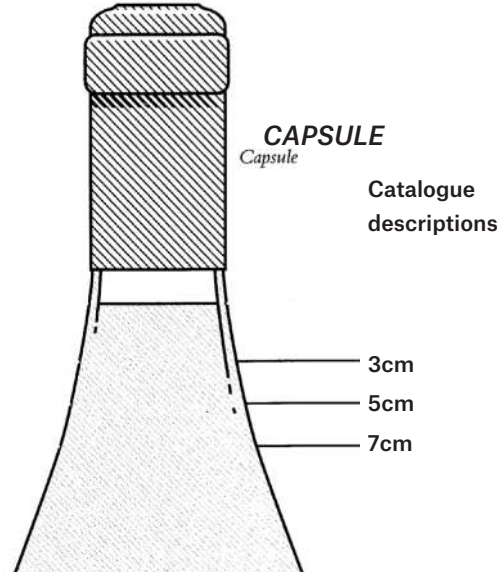
LEVEL/ULLAGE DESCRIPTIONS AND INTERPRETATIONS

(see notes below)

BORDEAUX



BURGUNDY



- 1 into neck: Level of young wines. Exceptionally good in wines over 10 years old.
- 2 bottom neck: Perfectly good for any age of wine. Outstandingly good for a wine of 20 years in bottle, or longer.
- 3 very top-shoulder
- 4 top-shoulder: Normal for any claret 15 years old or older.
- 5 upper-shoulder: Slight natural reduction through the easing of the cork and evaporation through cork and capsule. Usually no problem. Acceptable for any wine over 20 years old. Exceptional for pre-1950 wines.

- 6 mid-shoulder: Probably some weakening of the cork and some risk. Not abnormal for wines 30/40 years of age. Estimates usually take this into account.
- 7 mid-low-shoulder: Some risk. Low estimates.
- 8 low-shoulder: Risky and usually only accepted for sale if wine or label exceptionally rare or interesting. Always offered with low estimate.

Because of the slope of shoulder it is impractical to describe levels as mid-shoulder, etc. Wherever appropriate the level between cork and wine will be measured and catalogued in centimetres.

The condition and drinkability of burgundy is less affected by ullage than its equivalent from Bordeaux. For example, a 5 to 7 cm. ullage in a 30-year-old burgundy can be considered normal, indeed good for age, 3.5 to 4 cm. excellent for age, even 7cm. rarely a risk.

BOTTLE SIZES

- magnum = two regular bottles
- marie-jeanne = three regular bottles
- double-magnum = four regular bottles
- jeroboam = four regular bottles (Burgundy, Champagne)
- jeroboam = six regular bottles (Bordeaux) (or 5 litres)
- impériale = eight regular bottles (Bordeaux)
- methuselah = eight regular bottles (Burgundy)

SPECIAL NOTICE

Though every effort is made to describe or measure the levels of older vintages, corks over twenty years old begin to lose their elasticity and levels can change between cataloguing and sale. Old corks have also been known to fail during or after shipment.

We therefore repeat that there is always a risk of cork failure with old wines and due allowance must be made for this.

Under no circumstances can an adjustment of price or credit be made after delivery except under the terms stated in Paragraph 5 of the Conditions of Sale.

Unless otherwise stated, Bordeaux are château bottled and all wines are bottled in the country of production.

Important note regarding opening of cases and listing of levels: Christie's general policy is to open all wood cases and to describe levels. Bidders must make allowances for reasonable variations in ullage which may be encountered in cases older than twenty years. Additionally all wine younger than twenty years have levels bottom neck/2.5cm or better unless otherwise noted.

BUYING AT CHRISTIE'S

CONDITIONS OF SALE

Bidders are strongly encouraged to read the Conditions of Sale contained in this catalogue that state the terms governing the purchase of all property sold at auction and the conditions upon which Christie's guarantees the authenticity of property offered for sale.

ESTIMATES

Catalogue entries include descriptions for every lot and a price range that is our specialists' opinion of the price expected at auction. Estimates are based upon prices recently paid at auction for comparable property and take into account condition, rarity, quality and provenance (history of previous ownership). Estimates are prepared well in advance of the sale and are subject to revision. Buyers should not rely upon estimates as a representation or prediction of actual selling prices. Estimates do not include the buyer's premium or sales tax. Where "Estimate on Request" appears, please contact the Specialist Department for further information.

RESERVES

Unless otherwise indicated, all lots in this catalogue are offered subject to a reserve. The reserve is the confidential minimum price the consignor will accept and below which a lot will not be sold. The reserve will not exceed the low pre-sale estimate. Lots that are not subject to a reserve are identified by the symbol • next to the lot number.

BUYER'S PREMIUM FOR WINE

Christie's charges a premium to the buyer on the final bid price of each lot of wine sold at the following rates:

22.5% of the final bid price of each lot.

For all lots, taxes are payable on the premium at the applicable rate.

PRE-AUCTION VIEWING

Pre-auction viewings are open to the public and free of charge. Christie's specialists are available to give advice at viewings or by appointment. We encourage prospective buyers to examine lots thoroughly and to request condition reports. Exceptions: Wine: All viewings are by appointment only. To make arrangements please contact the Wine Department

BIDDER REGISTRATION

Prospective buyers should register for a numbered bidding paddle at least 30 minutes before the sale. New clients, or those who have not made a recent purchase at Christie's, will be asked to supply a bank reference to register.

To avoid any delay in the release of purchases, please pre-arrange check or credit approval through Christie's Credit Department at +1 212 636 2490 or by fax at +1 212 636 4943.

BIDDING

The auctioneer accepts bids from those present in the saleroom, from telephone bidders or by absentee written bids left with Christie's in advance of the auction. The auctioneer may also execute bids on behalf of the consignor up to the amount of the reserve, either by placing consecutive bids or by entering bids in response to saleroom, telephone, and/or absentee bids. The auctioneer will not specifically identify bids placed on behalf of the consignor. Under no circumstances will the auctioneer place any bid on behalf of the consignor at or above the reserve. Please note New York State law requires that buyers of alcoholic beverages must be at least 21 years of age.

ABSENTEE BIDS

Absentee bids are written instructions from prospective buyers directing Christie's to bid on their behalf up to a maximum amount specified for

each lot. Christie's staff will attempt to execute an absentee bid at the lowest possible price taking into account the reserve price and other bids. If identical bids are received from two or more parties, the first bid received by Christie's will take priority. Absentee bids submitted on "no reserve" lots will, in the absence of a higher bid, be executed at approximately 50% of the low pre sale estimate or at the amount of the bid if it is less than 50% of the low pre-sale estimate. The auctioneer may execute absentee bids directly from the rostrum, clearly identifying these as "absentee bids," "book bids," "order bids" or "commission bids." Absentee Bids Forms are available in this catalogue, at any Christie's location or on www.christies.com.

TELEPHONE BIDS

Telephone bids will be accepted for lots with low-end estimates of \$1,500 and above, no later than 24 hours prior to the sale and only if the capacity of our pool of staff phone bidders allows. Arrangements to bid in languages other than English must be made well in advance of the sale date.

Telephone bids may be recorded. By bidding on the telephone, prospective purchasers consent to the recording of their conversations.

Christie's offers all absentee and telephone bidding services as a convenience to our clients, but will not be responsible for errors or failures to execute bids.

BIDDING INCREMENTS

Bidding generally opens below the low estimate and advances in increments of up to 10%, subject to the auctioneer's discretion.

Absentee bids that do not conform to the increments set below may be lowered to the next bidding interval.

\$50 to \$1,000	by \$50s
\$1,000 to \$2,000	by \$100s
\$2,000 to \$3,000	by \$200s
\$3,000 to \$5,000	by \$200, \$500, \$800 (ie: \$4,200, \$4,500, \$4,800)
\$5,000 to \$10,000	by \$500s
\$10,000 to \$20,000	by \$1,000s
\$20,000 to \$30,000	by \$2,000s
\$30,000 to \$50,000	by \$2,000, \$5,000, \$8,000 (ie: \$32,000, \$35,000, \$38,000)
\$50,000 to \$100,000	by \$5,000s
\$100,000 to \$200,000	by \$10,000s
above \$200,000	at the auctioneer's discretion

The auctioneer may vary the increments during the course of the auction at his or her own discretion.

SUCCESSFUL BIDS

The fall of the auctioneer's hammer indicates the final bid, at which time the buyer assumes full responsibility for the lot. The results of absentee bids will be sent by mail after the auction. Successful bidders will pay the price of the final bid plus premium plus any applicable taxes.

AUCTION RESULTS

To obtain spoken results for specific lots or faxed results for an entire auction, please call +1 212 703 8080.

PAYMENT

Buyers are expected to make payment for purchases immediately after the auction. To avoid delivery delays, prospective buyers are encouraged to supply bank or other suitable references before the auction. Please note that Christie's will not accept payments for purchased Lots from any party other than the registered buyer.

Lots purchased in New York may be paid for in the following ways: **wire transfer, credit card** (up to \$50,000), **bank checks, checks and cash,**

money orders or travellers checks (up to \$7,500 combined total, subject to conditions)

Wire transfer: JPMorgan Chase Bank, N.A. 270 Park Avenue New York, NY 10017 ABA# 021000021 FBO: Christie's Inc. Account # 957-107978, for international transfers, SWIFT: CHASUS33.

Credit cards: Visa, MasterCard, American Express and China UnionPay a limit of \$50,000 for credit card payment will apply. This limit is inclusive of the buyer's premium and any applicable taxes. Credit card payments at the NY sale site will only be accepted for NY sales. Christie's will not accept credit card payments for purchases in any other sale site. The fax number to send completed CNP (Card Member not Present) authorization forms to is +1 212 636 4939. Alternatively, clients can mail the authorization form to the address below.

Cash, Money Orders or Travellers Checks is limited to \$7,500 (subject to conditions).

Bank Checks should be made payable to Christie's (subject to conditions).

Checks should be made payable to Christie's. Checks must be drawn on a US bank and payable in US dollars. In order to process your payment efficiently, please quote sale number, invoice number and client number with all transactions.

All mailed payments should be sent to:

Christie's Inc. Cashiers' Department, 20 Rockefeller Center, New York, NY 10020. Please direct all inquiries to the Cashiers' Office Tel: +1 212-636-2495 Fax +1 212-636-4939 Please note that Christie's will not accept payments for purchased Lots from any party other than the buyer, unless otherwise agreed between the buyer and Christie's prior to the sale.

SALES TAX

Purchases picked up in New York or delivered to locations in California, District of Columbia, Florida, Illinois, New York, Pennsylvania, Rhode Island or Texas may be subject to sales or compensating use tax of such jurisdictions. It is the buyer's responsibility to ascertain and pay all taxes due. Buyers claiming exemption from sales tax must have the appropriate documentation on file with Christie's prior to the release of the property. For more information, please contact Purchaser Payments at +1 212 636 2496.

COLLECTION OF PURCHASED LOTS

Buyers are expected to remove their property within 7 calendar days of the auction. Please refer to the section on Collection and Delivery of Wine at the back of the catalogue for collection information for purchased lots.

SHIPPING

A Christie's and Columbus Circle Wines and Spirits Collection and Delivery Form is enclosed with each invoice. It is the buyer's responsibility to pick up purchases or make all shipping arrangements. After payment has been made in full, Christie's and Columbus Circle Wines and Spirits, can arrange property packing and shipping at the buyer's request and expense.

EXPORT/IMPORT PERMITS

Property sold at auction may be subject to laws governing export from the US and import restrictions of foreign countries. Buyers should always check whether an export license is required before exporting. It is the buyer's sole responsibility to obtain any relevant export or import license. The denial of any license or any delay in obtaining licenses shall neither justify the rescission of any sale nor any delay in making full payment for the lot. Local laws may prohibit the import of some property and/or may prohibit the resale of some property in the country of importation, no such restriction shall justify the rescission of any sale or delay in making full payment for the lot.

CONDITIONS OF SALE FOR WINE

These Conditions of Sale and the Important Notices and Explanation of Cataloguing Practice contain all the terms on which Christie's, Columbus Circle Wines and Spirits and the seller contract with the buyer. They may be amended by posted notices or oral announcements made during the sale. By bidding at auction you agree to be bound by these terms.

1. CHRISTIE'S AND COLUMBUS CIRCLE WINES AND SPIRITS AS AGENT

Except as otherwise stated Christie's and Columbus Circle Wines and Spirits acts as agent for the seller. The contract for the sale of the property is therefore made between the seller and the buyer.

2. BEFORE THE SALE

(a) Examination of property
Prospective buyers are strongly advised to examine personally any property in which they are interested, before the auction takes place. Condition reports are usually available on request. Neither Christie's, Columbus Circle Wines and Spirits nor the seller provides any guarantee in relation to the nature of the property. The property is sold "as is."

(b) Catalogue and other descriptions
Our cataloguing practice is explained in the Important Notices and Explanation of Cataloguing Practice after the catalogue entries. All statements by us in the catalogue entry for the property or in the condition report, or made orally or in writing elsewhere, are statements of opinion and are not to be relied on as statements of fact. Such statements do not constitute a representation, warranty or assumption of liability by us of any kind. References in the catalogue entry or the condition report to damage or restoration are for guidance only and should be evaluated by personal inspection by the bidder or a knowledgeable representative. The absence of such a reference does not imply that an item is free from defects or restoration, nor does a reference to particular defects imply the absence of any others. Estimates of the selling price should not be relied on as a statement that this is the price at which the item will sell or its value for any other purpose. Except as set forth in paragraph 6 below, neither Christie's, Columbus Circle Wines and Spirits nor the seller is responsible in any way for errors and omissions in the catalogue or any supplemental material.

(c) Buyer's responsibility
All property is sold "as is" without any representation or warranty of any kind by Christie's, Columbus Circle Wines and Spirits or the seller. Buyers are responsible for satisfying themselves concerning the condition of the property and the matters referred to in the catalogue entry.

3. AT THE SALE

(a) Refusal of admission
Christie's and Columbus Circle Wines and Spirits have the right, at our complete discretion, to refuse admission to the premises or participation in any auction and to reject any bid.

(b) Registration before bidding
Prospective buyers who wish to bid in the saleroom can register online in advance of the sale, or can come to the saleroom on the day of the sale approximately 30 minutes before the start of the sale to register in person. A prospective buyer must complete and sign a registration form and provide identification before bidding. We may require the production of bank or other financial references.

(c) Bidding as principal
When making a bid, a bidder is accepting personal liability to pay the purchase price, including the buyer's premium and all applicable taxes, plus all other applicable charges, unless it has been explicitly agreed in writing with Christie's before the commencement of the sale that the bidder is acting as agent on behalf of an identified third party acceptable to Christie's, and that Christie's will only look to the principal for payment.

(d) Absentee bids
We will use reasonable efforts to carry out written bids delivered to us prior to the sale for the convenience of clients who are not present at the auction in person, by an agent or by telephone. Bids must be placed in the currency of the place of the sale. Please refer to the catalogue for the Absentee Bids Form. If we receive written bids on a particular lot for identical amounts, and at the auction these are the highest bids on the lot, it will be sold to the person whose written bid was received and accepted first. Execution of written bids is a free service undertaken subject to other commitments at the time of the sale and we do not accept liability for failing to execute a written bid or for errors and omissions in connection with it.

(e) Telephone bids
Telephone bids will be accepted for lots with low-end estimates of \$1,500 and above, no later than 24 hours prior to the sale and only if the capacity of our pool of staff phone bidders allows. Arrangements to bid in languages other than English must be made well in advance of the sale date. Telephone bids may be recorded. By bidding on the telephone, prospective purchasers consent to the recording of their conversations. Christie's offers all absentee and telephone bidding services as a convenience to our clients, but will not be responsible for errors or failures to execute bids.

(f) Currency converter
At some auctions a currency converter may be operated. Errors may occur in the operation of the currency converter and we do not accept liability to bidders who follow the currency converter rather than the actual bidding in the saleroom.

(g) Video or digital images
At some auctions there may be a video or digital screen. Errors may occur in its operation and in the quality of the image and we do not accept liability for such errors.

(h) Reserves
Unless otherwise indicated, all lots are offered subject to a reserve, which is the confidential minimum price below which the lot will not be sold. The reserve will not exceed the low estimate printed in the catalogue. If any lots are not subject to a reserve, they will be identified with the symbol • next to the lot number. The auctioneer may open the bidding on any lot below the reserve by placing a bid on behalf of the seller. The auctioneer may continue to bid on behalf of the seller up to the amount of the reserve, either by placing consecutive bids or by placing bids in response to other bidders. Absentee bids submitted on "no reserve" lots will, in the absence of a higher bid, be executed at approximately 50% of the low pre sale estimate or at the amount of the bid if it is less than 50% of the low pre-sale estimate.

(i) Auctioneer's discretion
The auctioneer has the right at his absolute and sole discretion to refuse any bid, to advance the bidding in such a manner as he may decide, to

withdraw or divide any lot, to combine any two or more lots and, in the case of error or dispute, and whether during or after the sale, to determine the successful bidder, to continue the bidding, to cancel the sale or to reoffer and resell the item in dispute. If any dispute arises after the sale, our sale record is conclusive.

(j) Successful bid and passing of risk
Subject to the auctioneer's discretion, the highest bidder accepted by the auctioneer will be the buyer and the striking of his hammer marks the acceptance of the highest bid and the conclusion of a contract for sale between the seller and the buyer. Risk and responsibility for the lot (including frames or glass where relevant) passes to the buyer at the expiration of seven calendar days from the date of the sale or on collection by the buyer if earlier.

4. AFTER THE SALE

(a) Buyer's premium
In addition to the hammer price, the buyer agrees to pay to us the buyer's premium together with any applicable value added tax, sales or compensating use tax or equivalent tax in the place of sale. The buyer's premium for wine is 22.5% of the hammer price on each lot.

(b) Payment and passing of title
Immediately following the sale, the buyer must provide us with his or her name and permanent address and, if so requested, details of the bank from which payment will be made. The buyer must pay the full amount due (comprising the hammer price, buyer's premium and any applicable taxes) not later than 4.30pm on the seventh calendar day following the sale. This applies even if the buyer wishes to export the lot and an export license is, or may be, required. The buyer will not acquire title to the lot until all amounts due to us from the buyer have been received by us in good cleared funds even in circumstances where we have released the lot to the buyer.

(c) Collection of purchases
We shall be entitled to retain items sold until all amounts due to us, or to Christie's International plc, or to any of its affiliates, subsidiaries or parent companies worldwide, have been received in full in good cleared funds or until the buyer has satisfied such other terms as we, in our sole discretion, shall require. Subject to this, the buyer shall collect purchased lots within seven calendar days from the date of the sale unless otherwise agreed between us and the buyer.

(d) Packing, handling and shipping
Although we shall use reasonable efforts to take care when handling, packing and shipping a purchased lot, we are not responsible for the acts or omissions of third parties whom we might retain for these purposes. Similarly, where we may suggest other handlers, packers or carriers if so requested, we do not accept responsibility or liability for their acts or omissions.

(e) Export license
Unless otherwise agreed by us in writing, the fact that the buyer wishes to apply for an export license does not affect his or her obligation to make payment within seven days nor our right to charge interest or storage charges on late payment. We shall not be obliged to rescind a sale nor to refund any interest or other expenses incurred by the buyer where payment is made by the buyer in circumstances where an export license is required.

(f) Remedies for non payment
If the buyer fails to make payment in full in good cleared funds within the time required by

paragraph 4(b) above, we shall be entitled in our absolute discretion to exercise one or more of the following rights or remedies (in addition to asserting any other rights or remedies available to us by law):

- (i) to charge interest at such rate as we shall reasonably decide;
- (ii) to hold the defaulting buyer liable for the total amount due and to commence legal proceedings for its recovery together with interest, legal fees and costs to the fullest extent permitted under applicable law;
- (iii) to cancel the sale;
- (iv) to resell the property publicly or privately on such terms as we shall think fit;
- (v) to pay the seller an amount up to the net proceeds payable in respect of the amount bid by the defaulting buyer;
- (vi) to set off against any amounts which we, or Christie's International plc, or any of its affiliates, subsidiaries or parent companies worldwide, may owe the buyer in any other transactions, the outstanding amount remaining unpaid by the buyer;
- (vii) where several amounts are owed by the buyer to us, or to Christie's International plc, or to any of its affiliates, subsidiaries or parent companies worldwide, in respect of different transactions, to apply any amount paid to discharge any amount owed in respect of any particular transaction, whether or not the buyer so directs;
- (viii) to reject at any future auction any bids made by or on behalf of the buyer or to obtain a deposit from the buyer before accepting any bids;
- (ix) to exercise all the rights and remedies of a person holding security over any property in our possession owned by the buyer, whether by way of pledge, security interest or in any other way, to the fullest extent permitted by the law of the place where such property is located. The buyer will be deemed to have granted such security to us and we may retain such property as collateral security for such buyer's obligations to us;
- (x) to take such other action as we deem necessary or appropriate.

If we resell the property under paragraph (iv) above, the defaulting buyer shall be liable for payment of any deficiency between the total amount originally due to us and the price obtained upon resale as well as for all costs, expenses, damages, legal fees and commissions and premiums of whatever kind associated with both sales or otherwise arising from the default. If we pay any amount to the seller under paragraph (v) above, the buyer acknowledges that Christie's shall have all of the rights of the seller, however arising, to pursue the buyer for such amount.

(g) Failure to collect purchases
Where purchases are not collected within seven calendar days from the date of the sale, whether or not payment has been made, we shall be permitted to remove the property to a third party warehouse at the buyer's expense, and only release the items after payment in full has been made of removal, storage, handling, insurance and any other costs

incurred, together with payment of all other amounts due to us.

5. EXTENT OF CHRISTIE'S AND COLUMBUS CIRCLE WINES AND SPIRITS LIABILITY

Neither the seller, Christie's, nor Columbus Circle Wines and Spirits nor any of their officers, employees or agents, are responsible for the correctness of any statement of whatever kind concerning any lot, whether written or oral, nor for any other errors or omissions in description or for any faults or defects in any lot. Except as stated below, neither the seller, Christie's, nor Columbus Circle Wines and Spirits, nor any of their officers, employees or agents, give any representation, warranty or guarantee or assume any liability of any kind in respect of any lot with regard to merchantability, fitness for a particular purpose, description, size, quality, condition, attribution, authenticity, rarity, importance, medium, provenance, exhibition history, literature or historical relevance. Except as required by local law any warranty of any kind whatsoever is excluded by this paragraph.

Notwithstanding any other terms of these Conditions of Sale, if within 30 days after the sale, Christie's and Columbus Circle Wines and Spirits have received from the original buyer of any property notice of a claim in writing that any lot is short or has suffered breakage, then Christie's and Columbus Circle Wines and Spirits in their sole discretion will decide any such claim as between the consignor and the buyer and may rescind the sale and refund the purchase price received.

The benefits of the warranty are not assignable and shall apply only to the original buyer of the lot as shown on the invoice originally issued by Christie's and Columbus Circle Wines and Spirits when the lot was sold at auction.

The original buyer must have remained the owner of the lot without disposing of any interest in it to any third party.

The buyer's sole and exclusive remedy against Christie's, Columbus Circle Wines and Spirits and the seller, in place of any other remedy which might be available, is the cancellation of the sale and the refund of the original purchase price paid for the lot. Neither Christie's, Columbus Circle Wines and Spirits nor the seller will be liable for any special, incidental or consequential damages including, without limitation, loss of profits nor for interest.

6. COPYRIGHT

The copyright in all images, illustrations and written material produced by or for Christie's, relating to a lot including the contents of this catalogue, is and shall remain at all times the property of Christie's and shall not be used by the buyer, nor by anyone else, without our prior written consent. Christie's and the seller make no representation or warranty that the buyer of a property will acquire any copyright or other reproduction rights in it.

7. SEVERABILITY

If any part of these Conditions of Sale is found by any court to be invalid, illegal or unenforceable, that part shall be discounted and the rest of the conditions shall continue to be valid to the fullest extent permitted by law.

8. LAW AND JURISDICTION

The rights and obligations of the parties with respect to these Conditions of Sale, the conduct of the auction and any matters connected with any of the foregoing shall be governed and interpreted by the laws of the jurisdiction in which the auction is held. By bidding at auction, whether present in

person or by agent, by written bid, telephone or other means, the buyer shall be deemed to have submitted, for the benefit of Christie's, to the exclusive jurisdiction of the courts of that country, state, county or province, and (if applicable) of the federal courts sitting in such state.

SPECIAL NOTICE

Though every effort is made to describe the wines in this catalogue and to describe or measure the levels of older vintages, buyers of old wines must make appropriate allowances for natural variations of ullages, conditions of corks and wine. Corks over 20 years old begin to lose their elasticity and levels can change between cataloging and sale. Old corks have also been known to fail during or after shipment.

We therefore repeat that there is always a risk of cork failure with old wines and due allowance must be made for this.

Under no circumstances can a return be accepted or an adjustment of price or credit be made after delivery except under the terms stated in paragraph 5, above, of the Conditions of Sale.

Unless otherwise stated, Bordeaux are châteaux bottled.

Important note regarding opening of cases and listing of levels: Christie's and Columbus Circle Wines and Spirits general policy is to open all wood cases and to describe levels. Bidders must make allowances for reasonable variations in ullage which may be encountered in cases older than twenty years.

WORLDWIDE SALEROOMS AND AMERICAN OFFICES

ARGENTINA

BUENOS AIRES

Tel: +54 11 43 93 42 22

Cristina Carlisle

BERMUDA

BERMUDA

+1 401 849 9222

Betsy Ray

BRAZIL

RIO DE JANEIRO

+5521 2225 6553

Candida Sodre

SÃO PAULO

+55 11 3061 2576

Nathalie Lenci

CANADA

TORONTO

+1 416 960 2063

Brett Sherlock

CHILE

SANTIAGO

+56 2 2 2631642

Denise Ratinoff de Lira

COLOMBIA

BOGOTA

+57 312 421 1509

Juanita Madrinan

FRANCE

• PARIS

+33 (0)1 40 76 85 85

INDIA

• MUMBAI

+91 (22) 2280 7905

Menaka Kumari-Shah

Sonal Singh

ITALY

• MILAN

+39 02 303 2831

JAPAN

TOKYO

+81 (0)3 6267 1766

Ryutaro Katayama,

Chairman

Nobu Nagara

MEXICO

MEXICO CITY

+52 55 5281 5503

Gabriela Lobo

THE NETHERLANDS

• AMSTERDAM

+31 (0)20 57 55 255

PEOPLES REPUBLIC OF CHINA

• HONG KONG

+852 2760 1766

• SHANGHAI

+86 (0)21 6355 1766

Jinjing Cai

SWITZERLAND

• GENEVA

+41 (0)22 319 17 66

Eveline de Proyart

• ZURICH

+41 (0)44 268 1010

Dirk Boll

UNITED ARAB EMIRATES

• DUBAI

+971 (0)50 551 4264

Chaden Khoury

UNITED KINGDOM

• LONDON, KING STREET

+44 (0)20 7839 9060

• LONDON, SOUTH KENSINGTON

+44 (0)20 7930 6074

UNITED STATES

BOSTON

+1 617 536 6000

Elizabeth M. Chapin

CHICAGO

+1 312 787 2765

Lisa Cavanaugh

DALLAS

+1 214 599 0735

Capera Ryan

HOUSTON

+1 713 802 0191

Jessica Phiifer

LOS ANGELES

+1 310 385 2600

Rita Boyle

MIAMI

+1 305 445 1487

Jessica Katz

NEWPORT

+1 401 849 9222

Betsy D. Ray

• NEW YORK

+1 212 636 2000

PALM BEACH

+1 561 833 6952

Maura Smith

PHILADELPHIA

+1 610 520 1590

Christie Lebano

SAN FRANCISCO

+1 415 982 0982

Ellanor Notides

• DENOTES SALEROOM

ENQUIRIES?— Call the Saleroom or Office EMAIL— info@christies.com

For a complete salerooms & offices listing go to christies.com

CHRISTIE'S SPECIALIST DEPARTMENTS AND SERVICES

DEPARTMENTS

AFRICAN AND OCEANIC ART

PAR: +33 (0)140 768 386
NY: +1 212 484 4898

AMERICAN DECORATIVE ARTS

NY: +1 212 636 2230

AMERICAN FURNITURE

NY: +1 212 636 2230

AMERICAN ART

NY: +1 212 636 2140

ANGLO-INDIAN ART

KS: +44 (0)20 7389 2570

ANTIQUITIES

NY: +1 212 636 2245

ASIAN 20TH CENTURY AND CONTEMPORARY ART

NY: +1 212 468 7133

AUSTRALIAN PICTURES

KS: +44 (0)20 7389 2040

BOOKS AND MANUSCRIPTS

NY: +1 212 636 2665

BRITISH & IRISH ART

KS: +44 (0)20 7389 2682

NY: +1 212 636 2120

SK: +44 (0)20 7752 3257

BRITISH ART ON PAPER

KS: +44 (0)20 7389 2278

SK: +44 (0)20 7752 3293

NY: +1 212 636 2120

BRITISH PICTURES 1500-1850

KS: +44 (0)20 7389 2945

CARPETS

NY: +1 212 636 2217

CERAMICS AND GLASS

NY: +1 212 636 2215

CHINESE PAINTINGS

NY: +1 212 636 2195

CHINESE WORKS OF ART

NY: +1 212 636 2180

CLOCKS

KS: +44 (0)20 7389 2357

CORKSCREWS

SK: +44 (0)20 7752 3263

COSTUME, TEXTILES AND FANS

SK: +44 (0)20 7752 3215

ENTERTAINMENT MEMORABILIA

SK: +44 (0)20 7752 3281

FOLK ART

NY: +1 212 636 2230

FURNITURE

NY: +1 212 636 2200

HOUSE SALES

SK: +44 (0)20 7752 3260

ICONS

SK: +44 (0)20 7752 3261

IMPRESSIONIST AND MODERN ART

NY: +1 212 636 2050

INDIAN AND SOUTHEAST ASIAN ART

NY: +1 212 636 2190

INDIAN CONTEMPORARY ART

NY: +1 212 636 2190

KS: +44 (0)20 7389 2700

INTERIORS

NY: +1 212 636 2032

SK: +44 (0)20 7389 2236

ISLAMIC WORKS OF ART

KS: +44 (0)20 7389 2370

SK: +44 (0)20 7752 3239

JAPANESE ART

NY: +1 212 636 2160

KS: +44 (0)20 7389 2595

JEWELLERY

NY: +1 212 636 2300

KOREAN ART

NY: +1 212 636 2165

LATIN AMERICAN ART

NY: +1 212 636 2150

MINIATURES

NY: +1 212 636 2250

MODERN DESIGN

SK: +44 (0)20 7389 2142

MUSICAL INSTRUMENTS

NY: +1 212 636 2000

NINETEENTH CENTURY FURNITURE AND SCULPTURE

NY: +1 212 707 5910

OBJECTS OF VERTU

NY: +1 212 636 2250

OLD MASTER DRAWINGS

NY: +1 212 636 2120

OLD MASTER PAINTINGS AND 19TH CENTURY EUROPEAN ART

NY: +1 212 636 2120

PHOTOGRAPHS

NY: +1 212 636 2330

PICTURE FRAMES

SK: +44 (0)20 7389 2763

POST WAR AND CONTEMPORARY ART

NY: +1 212 636 2100

POSTERS

SK: +44 (0)20 7752 3208

PRINTS

NY: +1 212 636 2290

RUSSIAN WORKS OF ART

NY: +1 212 636 2260

SCIENTIFIC INSTRUMENTS

SK: +44 (0)20 7752 3286

SCULPTURE

KS: +44 (0)20 7389 2331

SK: +44 (0)20 7389 2794

SILVER

NY: +1 212 636 2250

TOPOGRAPHICAL PICTURES

KS: +44 (0)20 7389 2040

SK: +44 (0)20 7752 3291

TWENTIETH CENTURY DECORATIVE ART AND DESIGN

NY: +1 212 636 2240

VICTORIAN PICTURES

KS: +44 (0)20 7389 2468

SK: +44 (0)20 7752 3257

WATCHES

NY: +1 212 636 2320

WINE

NY: +1 212 636 2270

AUCTION SERVICES

CHRISTIE'S AUCTION ESTIMATES

Tel: +1 212 492 5485

Fax: +1 212 636 4930

www.christies.com

CORPORATE COLLECTIONS

Tel: +1 212 636 2901

Fax: +1 212 636 4929

Email: celkies@christies.com

ESTATES AND APPRAISALS

Tel: +1 212 636 2400

Fax: +1 212 636 2370

Email: info@christies.com

MUSEUM SERVICES

Tel: +1 212 636 2620

Fax: +1 212 636 4931

Email: awhiting@christies.com

PRIVATE SALES

US: +1 212 636 2557

Fax: +1 212 636 2035

Email: vpfeiffer@christies.com

OTHER SERVICES

CHRISTIE'S EDUCATION

New York

Tel: +1 212 355 1501

Fax: +1 212 355 7370

Email: christieseducation@christies.edu

Hong Kong

Tel: +852 2978 6747

Fax: +852 2525 3856

Email: hkcourse@christies.com

London

Tel: +44 (0)20 7665 4350

Fax: +44 (0)20 7665 4351

Email: education@christies.com

Paris

Tel: +33 (0)1 42 25 10 90

Fax: +33 (0)1 42 25 10 91

Email: ChristiesEducationParis@christies.com

CHRISTIE'S INTERNATIONAL REAL ESTATE

New York

Tel: +1 212 468 7182

Fax: +1 212 468 7141

Email:

info@christiesrealestate.com

London

Tel: +44 (0)20 7389 2551

Fax: +44 (0)20 7389 2168

Email:

info@christiesrealestate.com

Hong Kong

Tel: +852 2978 6788

Fax: +852 2845 2646

Email:

info@christiesrealestate.com

CHRISTIE'S FINE ART STORAGE SERVICES

London

+44 (0)20 7622 0609

london@cfass.com

New York

+1 212 974 4579

newyork@cfass.com

Singapore

Tel: +65 6543 5252

Email: singapore@cfass.com

CHRISTIE'S REDSTONE

Tel: +1 212 974 4500

KEY TO ABBREVIATIONS:

KS: *London, King Street*

NY: *New York, Rockefeller Plaza*

PAR: *Paris*

SK: *London, South Kensington*

CATALOGUE SUBSCRIPTIONS
EXPERT KNOWLEDGE, BEAUTIFULLY PRESENTED

WINE
 A very wide range of Bordeaux, Burgundy, Vintage Port, Champagne, Cognac, German, Italian, Californian and other fine wines.



Code	Subscription Title	Location	Issues	UK£Price	US\$Price	EURPrice
Wine						
H54	Fine Wine and Spirits	Hong Kong	6	48	76	71
N54	Fine Wine and Spirits	New York	6	86	143	131
L54	Fine Wine and Spirits	London	6	57	91	86

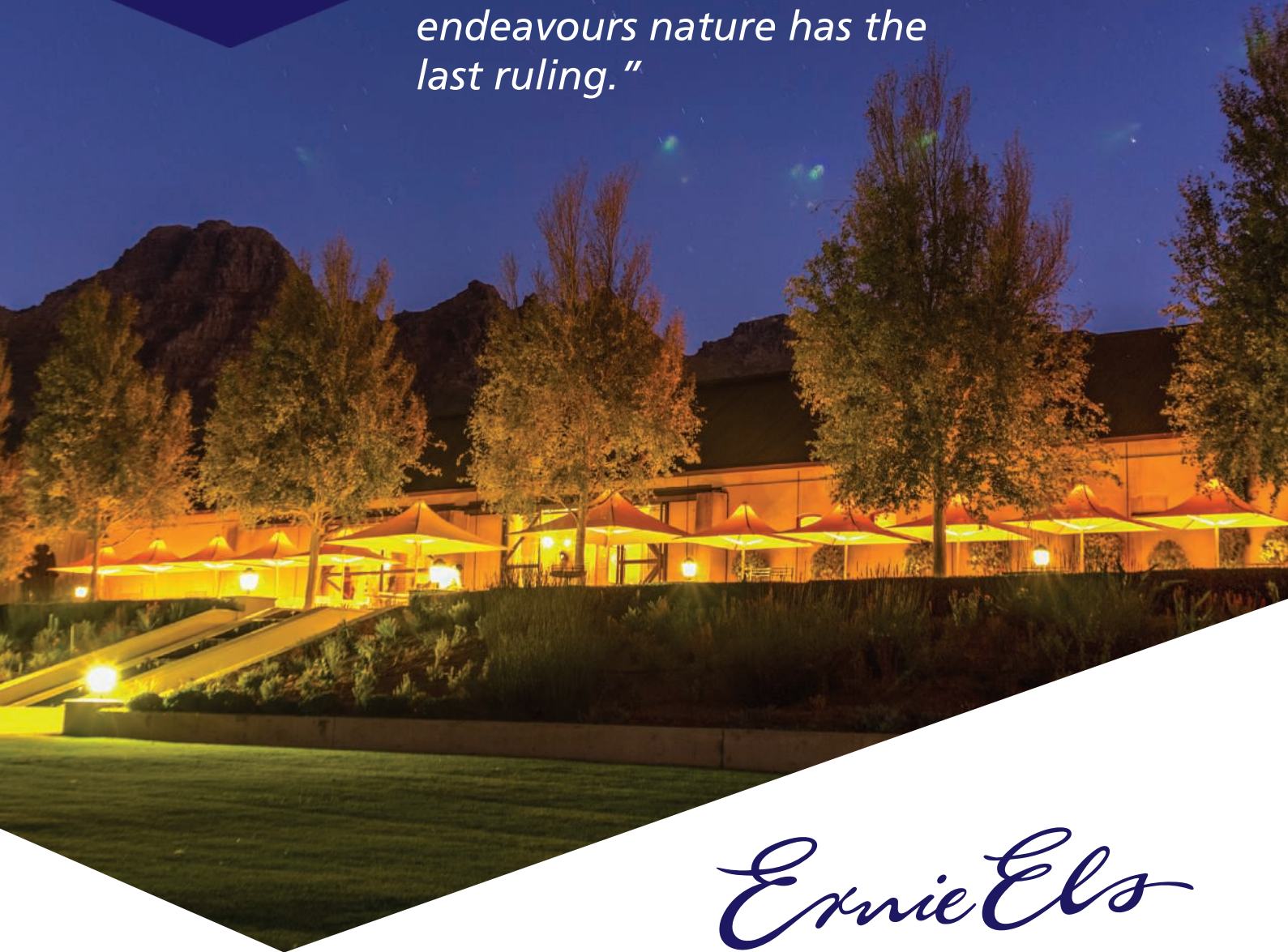
CHRISTIE'S
WWW.CHRISTIES.COM/SHOP

Photographs, Posters and Prints · Impressionist and Modern Art
 Jewellery, Watches and Wine · Antiquities and Tribal Art
 Asian and Islamic Art · Russian Art
 Furniture, Decorative Arts and Collectables · American Art and Furniture
 Books, Travel and Science · Design, Costume and Memorabilia
 Post-War and Contemporary Art
 Old Master Paintings and 19th Century Paintings



Experience Ernie Els Wines

"Wine is like golf, in both endeavours nature has the last ruling."



Ernie Els



www.ernieelswines.com



A STEP-BY-STEP GUIDE TO BUYING WINE AT CHRISTIE'S

- 1. REVIEW THE CATALOGUE.** A hard copy is available for purchase for \$25 by calling +1 212 636 2500, and is available online at <http://www.christies.com/departments/wine/wine-ecatalogues.aspx>.
- 2. SPEAK TO THE EXPERTS.** Wine specialists are always on hand to answer any questions you may have regarding the wine on offer—whether it's a question of conditions, drinking window, or provenance. Please email any questions to wine@christies.com or call +1 212 636 2270.
- 3. PLACE YOUR BIDS.** If you are new to bidding with Christie's please contact the Bids Department at +1 212 636 2437 to set up an account. Once your account is set up you may leave absentee bids by filling out the form at the end of this catalogue and faxing it to the Bids Department at +1 212 636 4938. If you would like to bid on the telephone, call the Bids Department at +1 212 636 2437. You may also register to bid online through Christie's LIVE.
- 4. IF YOU ARE SUCCESSFUL** in any of your bids and if Christie's has your email address, you will receive an email with your invoice on the first business day after the sale. If you are unsuccessful, you will not receive notice. You will also receive a hard copy of your invoice in the mail. If you would like your invoice faxed or need a replacement invoice (or have any questions regarding your invoice) email Devon Elovitz at delovitz@christies.com or call her at +1 212 636 2270.
- 5. READ THE "SUCCESSFUL BUYER LETTER"** included with your invoice regarding payment instructions. Payment can be accepted by credit card, up to \$50,000, bank transfer, or check. Do not send checks to the wine department. If you are paying with a personal check, it may take up to ten days to clear before your property can be released to you. Note that your purchases may be subject to local sales tax depending on where they will be shipped and that any sales tax due must be collected by Christie's prior to the lots being shipped. If you have any questions regarding payment, call the Cashiers Department at +1 212 636 2495.
- 6. FILL OUT THE "COLLECTION & DELIVERY FORM"** included with your invoice and found on the website and fax it to +1 212 636 4937 or email arttransport_newyork@christies.com
- 7. ENJOY YOUR WINE!**

ABSENTEE BIDS FORM

CHRISTIE'S NEW YORK

THE NOBLE WINE COLLECTION OF BARON VON STAFF-REITZENSTEIN

THURSDAY 3 DECEMBER 2015 AT 10.00 AM

20 Rockefeller Plaza
New York, NY 10020

CODE NAME: LAFLEUR

SALE NUMBER: 12715

(Dealers billing name and address must agree with tax exemption certificate. Invoices cannot be changed after they have been printed.)

BID ONLINE FOR THIS SALE AT CHRISTIES.COM

BIDDING INCREMENTS

Bidding generally opens below the low estimate and advances in increments of up to 10%, subject to the auctioneer's discretion. Absentee bids that do not conform to the increments set below may be lowered to the next bidding interval.

\$50 to \$1,000	by \$50s
\$1,000 to \$2,000	by \$100s
\$2,000 to \$3,000	by \$200s
\$3,000 to \$5,000	by \$200, 500, 800
(ie: \$4,200, 4,500, 4,800)	
\$5,000 to \$10,000	by \$500s
\$10,000 to \$20,000	by \$1,000s
\$20,000 to \$30,000	by \$2,000s
\$30,000 to \$50,000	by \$2,000, 5,000, 8,000
(ie: \$32,000, 35,000, 38,000)	
\$50,000 to \$100,000	by \$5,000s
\$100,000 to \$200,000	by \$10,000s
above \$200,000	at auctioneer's discretion

The auctioneer may vary the increments during the course of the auction at his or her own discretion.

AUCTION RESULTS: +1 212 703 8080

Please also refer to the information contained in Buying at Christie's.

I request Christie's to bid on the following lots up to the maximum price I have indicated for each lot. I understand that if my bid is successful, the purchase price will be the sum of my final bid plus a buyer's premium of 22.5% of the final bid price of each lot and any applicable state or local sales or use tax.

I understand that Christie's provides the service of executing absentee bids for the convenience of clients and that Christie's is not responsible for failing to execute bids or for errors relating to execution of bids. On my behalf, Christie's will try to purchase these lots for the lowest possible price, taking into account the reserve and other bids. Absentee bids submitted on "no reserve" lots will, in the absence of a higher bid, be executed at approximately 50% of the low pre-sale estimate or at the amount of the bid if it is less than 50% of the low pre-sale estimate.

If identical absentee bids are received for the same lot, the written bid received first by Christie's will take precedence.

Telephone bids will be accepted for lots with low-end estimates of \$1,500 and above, no later than 24 hours prior to the sale and only if the capacity of our pool of staff phone bidders allows.

Arrangements to bid in languages other than English must be made well in advance of the sale date.

Telephone bids may be recorded. By bidding on the telephone, prospective purchasers consent to the recording of their conversations.

Christie's offers all absentee and telephone bidding services as a convenience to our clients, but will not be responsible for errors or failures to execute bids.

All bids are subject to the terms of the Conditions of Sale and Limited Warranty printed in each Christie's catalogue.

ABSENTEE BIDS MUST BE RECEIVED AT LEAST 24 HOURS BEFORE THE AUCTION BEGINS

CHRISTIE'S WILL CONFIRM ALL BIDS RECEIVED BY FAX BY RETURN FAX. IF YOU HAVE NOT RECEIVED CONFIRMATION WITHIN ONE BUSINESS DAY, PLEASE CONTACT THE BID DEPARTMENT.

TEL: +1 212 636 2437 FAX: +1 212 636 4938 ON-LINE WWW.CHRISTIES.COM

OPTIONS TO BUY PARCELS:

A PARCEL, AS DENOTED IN THE CATALOGUE, IS A SEQUENCE OF LOTS CARRYING THE SAME ESTIMATES AND CONSISTING OF THE SAME TYPE OF WINE, QUANTITY AND BOTTLE SIZE. IN THE SALE, THE BUYER OF THE FIRST LOT OF A PARCEL OF WINE WILL HAVE, AT THE DISCRETION OF THE AUCTIONEER, THE OPTION TO TAKE ANY OR ALL FURTHER LOTS IN THE PARCEL FOR THE SAME HAMMER PRICE. IF THE OPTION IS NOT EXERCISED ON ALL LOTS IN THE SAME PARCEL, THE AUCTIONEER WILL OPEN BIDDING ON THE NEXT UNSOLD LOT AND OFFER THE BUYER OF THAT LOT THE OPTION TO TAKE ANY OR ALL OF THE REMAINING LOTS IN THE PARCEL SEQUENCE. BIDDING SHALL CONTINUE IN THE SAME MANNER UNTIL ALL LOTS IN THE PARCEL HAVE BEEN OFFERED AND DECLARED SOLD OR UNSOLD BY THE AUCTIONEER.

12715

Client Number (if applicable)

Sale Number

Billing Name (please print)

Address

City

State

Zone

Daytime Telephone

Evening Telephone

Fax (Important)

E-mail

Please tick if you prefer not to receive information about our upcoming sales by e-mail

Signature

If you have not previously bid or consigned with Christie's, please attach copies of the following documents: government-issued photo identification (such as a driving licence, national identity card, or passport) and, if not shown on the ID document, proof of current address, for example a utility bill or bank statement. Corporate clients: a certificate of incorporation. Other business structures such as trusts, offshore companies or partnerships: please contact the Credit Department at +1 212 636 2490 for advice on the information you should supply. If you are registering to bid on behalf of someone who has not previously bid or consigned with Christie's, please attach identification documents for yourself as well as the party on whose behalf you are bidding, together with a signed letter of authorization from that party. New clients, clients who have not made a purchase from any Christie's office within the last two years, and those wishing to spend more than on previous occasions will be asked to supply a bank reference. We also request that you complete the section below with your bank details:

Name of Bank(s)

Address of Bank(s)

Account Number(s)

Name of Account Officer(s)

Bank Telephone Number

CHRISTIE'S

CHRISTIE'S INTERNATIONAL PLC

Patricia Barbizet, Chairwoman and CEO
Jussi Pyykkänen, Global President
Stephen Brooks, Global Chief Operating Officer
Loïc Brivezac, Gilles Erulin, Gilles Pagniez,
Héloïse Temple-Boyer,
Sophie Carter, Company Secretary

CHRISTIE'S EXECUTIVE

Patricia Barbizet, Chairwoman and CEO
Jussi Pyykkänen, Global President
Stephen Brooks, Global Chief Operating Officer

INTERNATIONAL CHAIRMEN

François Curiel, Chairman, Asia Pacific
Stephen Lash, Chairman Emeritus, Americas
Viscount Linley, Honorary Chairman, EMERI
Charles Cator, Deputy Chairman, Christie's Int.
Xin Li, Deputy Chairwoman, Christie's Int.

CHRISTIE'S AMERICAS

Marc Porter, Chairman
Brook Hazelton, President

CHAIRMAN'S OFFICE

Stephen S. Lash, Chairman Emeritus
Cyanne Chutkow, Deputy Chairman
Derek Gillman, Chairman
Brett Gorvy, Chairman
Loïc Gouzer, Deputy Chairman
Ben Hall, Deputy Chairman
Nicholas Hall, Chairman
John Hays, Deputy Chairman
Conor Jordan, Deputy Chairman
Maria C. Los, Deputy Chairman
Laura Paulson, Deputy Chairman
Paul Provost, Deputy Chairman
Jonathan Rendell, Deputy Chairman
Jeanne Sloane, Deputy Chairman
Barrett White, Deputy Chairman
Eric Widing, Deputy Chairman
Athena Zonars, Deputy Chairman
Xin Li, Deputy Chairman, Asia

SENIOR VICE PRESIDENTS

Tunde Adenuga, John Auerbach, Martha Baer,
Vivian Bakmas-Pfeiffer, Heather Barnhart,
Michael Bass, Wendy Battleson,
Elizabeth Beaman, G. Max Bernheimer,
Rita Boyle, Bonnie Brennan, Thomas Burstein,
Sarah Cashin, Lisa Cavanaugh,
Elizabeth M. Chapin, Kenneth Citron,
Sandra Cobden, Chris Coover, Deborah Coy,
Francois de Poortere, Carrie Dillon,
Monica Dugot, Cathy Elkies, Sheri Farber,
Lydia Fenet, Jennifer Glaisek Ferguson,
Melissa Gagen, Virgilio Garza,
Keren Gottesman, Benjamin Gore, Karen Gray,
Jennifer K. Hall, Darius Himes, Lori Hotz,
Koji Inoue, Erik Jansson, Rahul Kadakia,
Kathy Kaplan, Karen Karp, Julie Kim,
Sharon Kim, Stefan Kist, Deepanjana Klein,
Peter Kloman, Susan Kloman, Jonathan Laib,
Brooke Lampley, Julie Leonhardt Latorre,
Thomas Lecky, Daphne Lingon, Richard Lloyd,
Gabriela Lobo, Rebecca MacGuire,
Andrew Massad, Alexis McCarthy,
Andrew McVinish, Adrien Meyer,
Michelle Meyercoed, Richard Nelson,
Shira Nichaman, Ellanor Notides, Tash Perrin,
Jason Pollack, Denise Ratnoff, John Reardon,
Margot Rosenberg, Leslie Roskind, Sonya Roth,
Caper Ryan, Caroline Sayan, Andrew Seltzer,
Xan Serafin, Brett Sherlock, Muys Snijders,

Will Strafford, Toby Usnik, Sarah Vandeweerd,
Carina Villinger, Francis Wahlgren, Cara Walsh,
Amy Wexler, Allison Whiting, Marissa Wilcox,
Jody Wilkie, Tom Woolston, Steven Wrightson,
Katsura Yamaguchi, Jennifer Zatorski

VICE PRESIDENTS

Vlad Ashurov, Kelly Ayers, Diane Baldwin,
Brett Banckek, Melissa Bennie, Adrian Bijanada,
Eileen Brankovic, Valerie Bulova,
Cristina Carlisle, John Caruso, Angelina Chen,
Karen Christian, Pauline Cintrat, Moira Cowan
Anne Dayton Ginette Dean, Cathy Delany,
Elise De La Selle, Anna Diehl, Yasaman Djunic,
Edouard du Breuil, Alexandra Duch,
Lorena Duran, Ian Ehling, Ross Elgie,
Jessica Fertig, John Foster, Lauren Frank,
Sara Friedlander, Vanessa Fusco, Sayuri Ganepola,
. Joshua Glazer, Margaret Gristina,
Izabela Grocholski, Helena Grubestic,
Elizabeth Hammer-Munemura,
Minna Hanninen, William Haydock,
Shannon Henry, Margaret Hoag, Per Holmberg,
Andrew Holter, Jennifer Hong, Val Hoyt,
Anne Igelbrink, Sandhya Jain Patel,
Leanne Jagtiani, Mariana Joseph,
Jessica Katz, Sumako Kawai, Alexis Klein,
David Kleiweg de Zwaan, Christina Landaw,
Richard LaSalle, Lisa Layfer, Christine Layng,
Andrew Lee, Nathalie Lenci, Mary Libby,
Molly Morse Limmer, Ryan Ludgate,
Ann Lydecker, Laurie Lasdon Marshall,
Erin McAndrew, Adam McCoy,
Capucine Milliot, Mark Moehrke,
Caroline Moustakis, Laura Nagle,
Marysol Nieves, Rachel Orkin-Ramey,
Allison Roberts, Joanna Ostrem,
Elisabeth Poole Parker, Carolyn Pastel,
Sam Pedder-Smith, Joseph Picone,
Jennifer Pitman, Saara Pritchard, Kimberly Ray,
Greg Reid, Casey Rogers, Thomas Root,
William Russell, Arianna Savage, Stacey Sayer,
Sari Sharaby-Swartz, Brian Shaw,
Candida Sodre, Maura Smith, Sasha Smith,
Gemma Sudlow, Bliss Summers, Scott Torrence,
Arianna Tosto, Terence Vetter, Hartley Waltman,
Michal Ward, Nicholas Wilson, Eric Wind,
Alan Wintermute, Jennifer Wright,
Kristen Yraola, Timothy Yule, Jennifer Yum,
Laryssa Zalisko, Steven J. Zick

ASSOCIATE VICE PRESIDENTS

Tylee Abbott, Lauren Anderson, Danielle Austin,
Yana Balan, Katherine Banser-Whittle,
Kelly Barros, Bernadine Boisson,
Anne Bracegirdle, Diana Bramham, Julie Brener,
Elisa Catenazzi, Ana Maria Celis, Patrick Conte,
Leiko Coyle, Whitney Cunningham,
Alison Curry, Anne Dayton, Melissa Donnelly,
Caitlin Donovan, Kristen de Bruyn,
Elise de la Selle, Ashish Desai, Julie Drennan,
Emily Fisher, Heather Fowler, Sara Fox,
Juarez Francis, Douglas Goldberg, Julia Gray,
Michael Gumener, Megan Guzman,
Rachel Hagopian, Natalie Hamrick,
Adeline Han, Anna Handy, Anne Hargrave,
Andrew Huber, Sima Jalili Caroline Kelly,
Sung Hee Kim, Kirill Kluev, Kristin Kolich,
Samantha Koslow, Paula Kowalczyk,
Emma Kronman, Blake Kurisu, David Lieu,
Carlie Lindeberg, Alexander Locke,
Marc Maibrunn, Amelia Manderscheid,
Patrick McGrath, Hadley Miller,
Danielle Mosse, Takaaki Murakami, Libia Nahas,
Tom Orf, Ayub Patel, Yi Peng, Jessica Phifer,
Carleigh Quententh, Prakash Ramdas,
Jeremy Rhodes, Lesley-Ann Roberts,
Kristina Ryan, Emily Sarokin, Morris Scardigno,
Ryan Schmidt, Morgan Schoonhoven,
Nicole Shapiro, Edwina Stitt, Bo Tan,
Peter Terela, Lillian Vasquez, Mike Wang,
Drew Watson, Simon Wills, Emma Winder,
Gretchen Yagielski, Kevie Yang,
Cara Zimmerman

CHRISTIE'S

AMERICAN ADVISORY BOARD

The Lord Carrington, KG, Honorary Chairman
John L. Vogelstein, Chairman
Stephen S. Lash, Vice Chairman
Herb Allen, Elizabeth Ballantine,
Charlie Blaquier, Christina Chandris,
Bruno Eberli, Lynn Forester de Rothschild,
Ambassador Stuart E. Eizenstat, Guido Goldman,
Ashton Hawkins, Esq., J Tomilson Hill III,
Barbara Jakobson, Nancy M. Kissinger,
George Klein, Ambassador William H. Luers,
Hon. Nicholas Platt, Li Chung Pei,
Jeffrey E. Perelman, Tara Rockefeller, Denise Saul,
Andrew N. Schiff, M.D., Clifford M. Sobel,
Michael Steinhart, Archbold D. van Beuren,
Casey Wasserman

INTERNATIONAL REPRESENTATIVES

Maura Benjamin, Meg Bowen,
Alexandra Burroughs, Nathalie Gerschel Kaplan,
Konrad Keese, Lydia Kimball, Mary Libby,
Juanita Madrinan, Brenda Norris, Kelly Perry,
Betsy Ray, Nancy Rome, Ashley Schiff



© Christie, Manson & Woods Ltd. (2015)
Catalogue photo credits:
Kristen Brochmann





CHRISTIE'S
THE ART PEOPLE

20 ROCKEFELLER PLAZA NEW YORK NEW YORK 10020